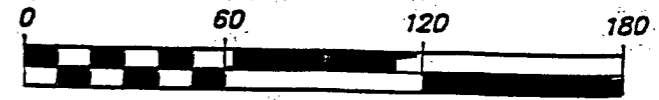


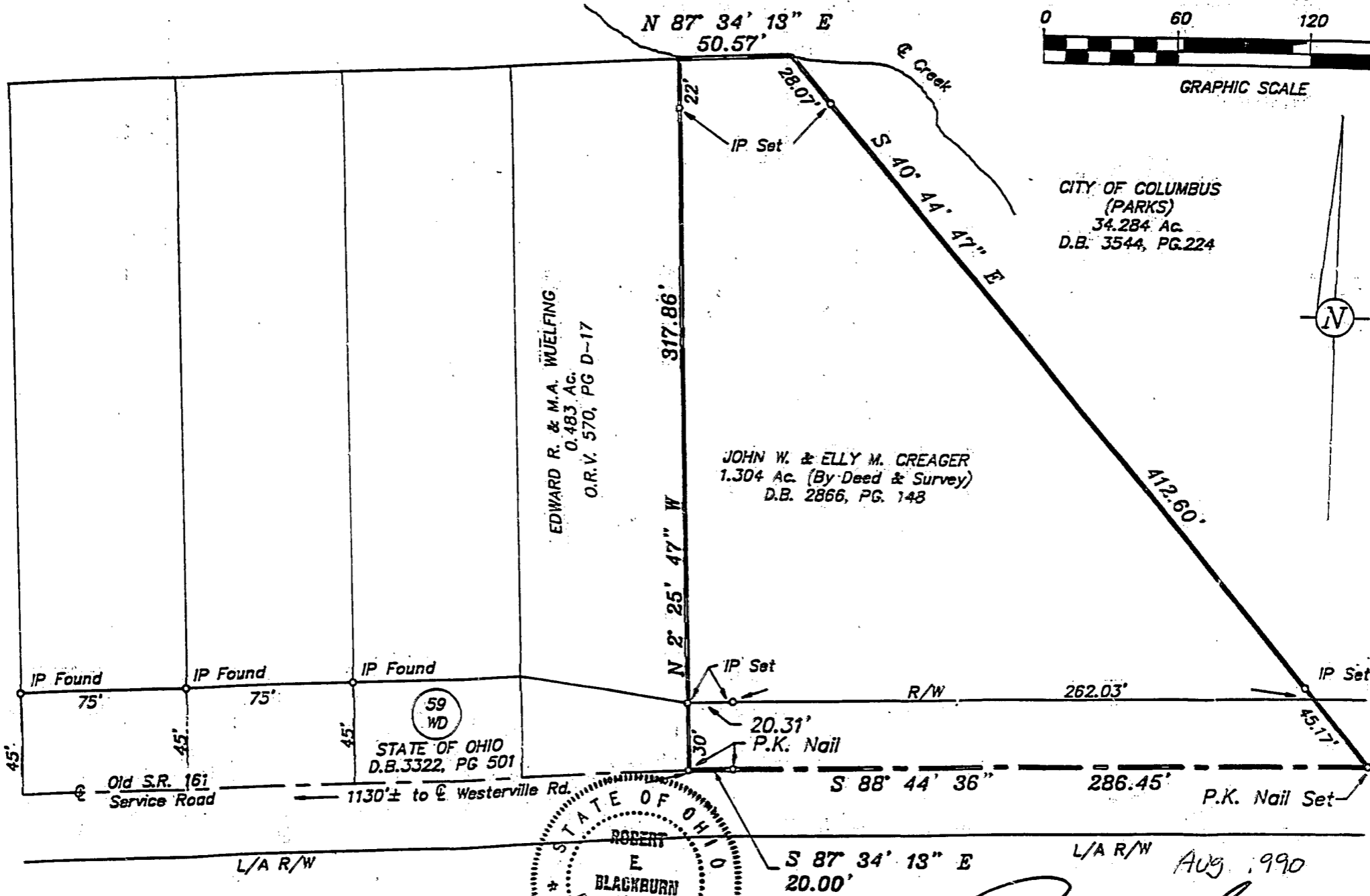
84857575

BLENDEN Twp. 3-B

SCALE: 1" = 60'



GRAPHIC SCALE

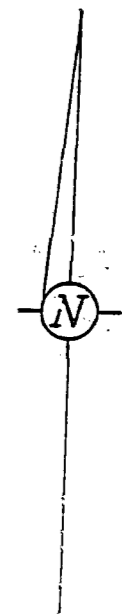
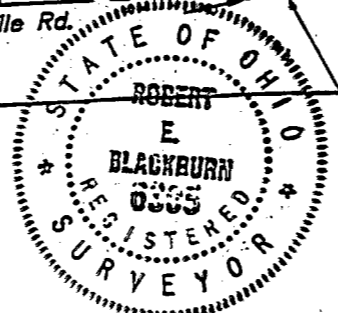


CITY OF COLUMBUS (PARKS)
34.284 Ac.
D.B. 3544, PG.224

EDWARD R. & M.A. WUELFING
0.483 Ac.
O.R.V. 570, PG D-17

JOHN W. & ELLY M. CREAGER
1.304 Ac. (By Deed & Survey)
D.B. 2866, PG. 148

59 WD
STATE OF OHIO
D.B.3322, PG 501



Basis for bearings used in this description were from a bearing of N 87° 34' 13" E on the old right-of-way of S.R. 161 as shown on Ohio Highway plans FRA-161-13.45 and all other bearings calculated from this meridian.

By *Robert E. Blackburn*
Robert E. Blackburn Ohio Surveyor No. 6305

AUG 1990