

E.M.H.&T. INC.
CONSULTING ENGINEERS & SURVEYORS
 CANTON, OHIO 43220

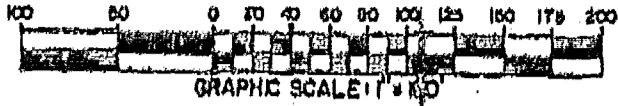
SURVEY OF 0.562 ACRE TRACT
 LOCATED IN N.E. QUARTER OF SECTION 12, TOWNSHIP 2, RANGE 16
 UNITED STATES MILITARY LANDS
 PLAIN TOWNSHIP, FRANKLIN COUNTY, OHIO

SCALE 1" = 100'

IRON PIN

OCTOBER 16, 1990

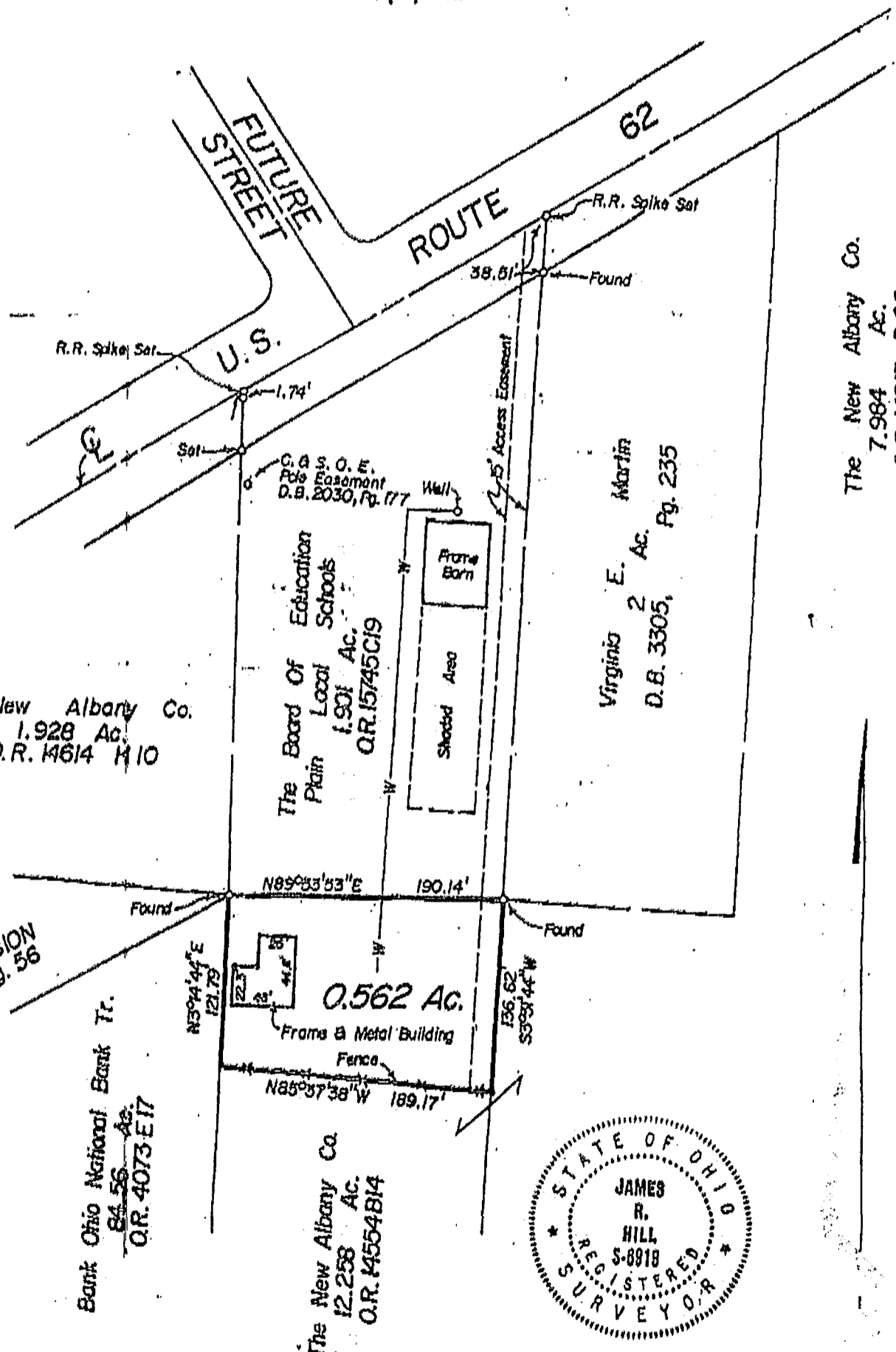
RECORD REFERENCES



Bearings and coordinates shown on surveyed parcels are based on THE OHIO STATE PLANE COORDINATE SYSTEM as per NAD83, Control for bearings and coordinates was from coordinates of monuments established by the Franklin County Engineering Department using Global Positioning System procedures and equipment.

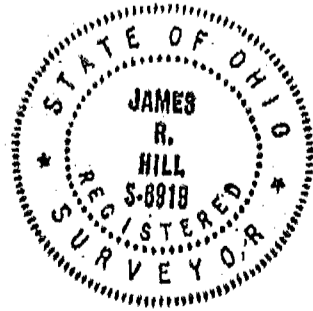
Post-It™ brand fax transmittal memo 7671 # of pages 1

Name	John Eckstein
Co.	S&W R
Phone #	
Fax #	
Dept.	
Fax #	221-0026



The New Albany Co.
 1.928 Ac.
 O.R. 14614 H10

HUGH SUBDIVISION
 P.B. 27, Pg. 56



The New Albany Co.
 7.984 Ac.
 O.R. 14213 B08

We hereby declare that the foregoing plat was prepared from an actual survey of the premises and shows the location of the boundary and improvements, and that there are no encroachments either way across the boundary of this lot except as shown hereon.

E.M.H.&T. INC.

By James R. Hill
 Professional Surveyor No. 6918

18885/1600 7-184-431-90-F1
 18860/1600

H-740-0