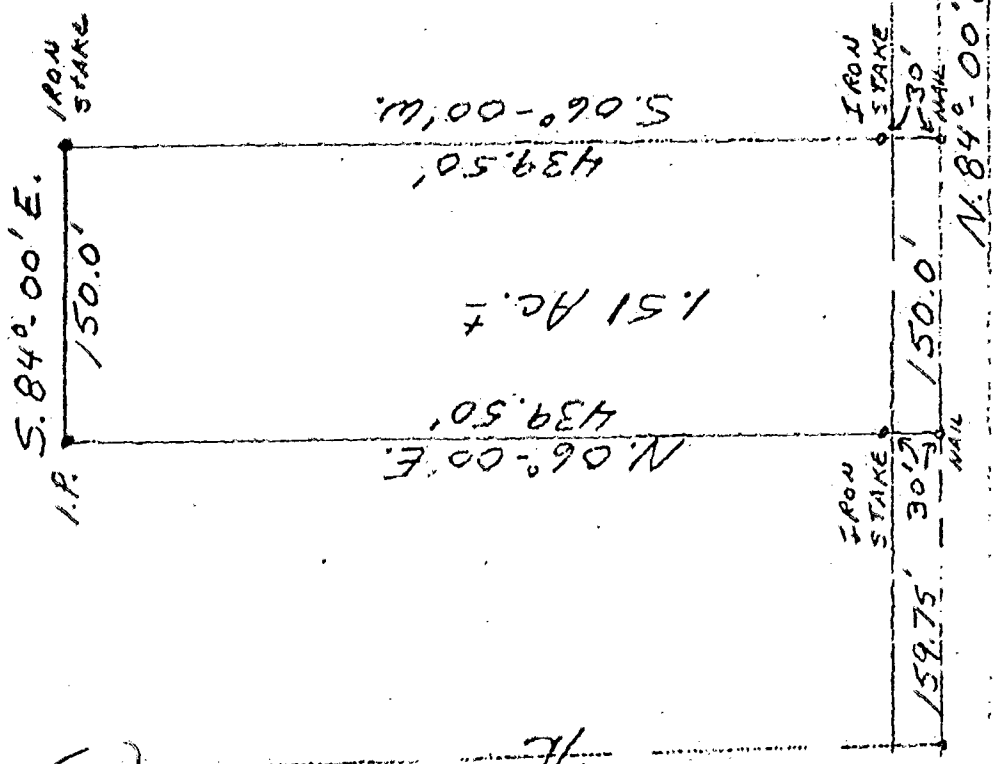
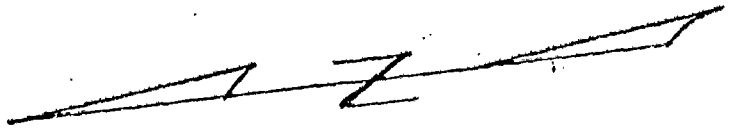


18835 1693

Being a part of the S.W. 1/4 of Sec. 9  
Qtr. 1, T-2, R-16, USML, Plain Twp., Franklin  
County, Ohio.



Scale: 1" = 100'



I hereby certify this plat and the  
survey it represents as being true to the  
best of my knowledge. Witness my hand  
March 1975

S-5458  
March, 1975

Handwritten initials or signature.