

# EVANS MECHWART HAMBLETON & TILTON, INC.

188857615  
189107675

CONSULTING ENGINEERS — SURVEYORS  
GAHANNA, OHIO

## SURVEY OF ACREAGE PARCELS

Located in Lot 10, Section 1, Township 2, Range 16  
United States Military Lands  
Plain Township, Franklin County, Ohio.

SCALE 1" = 100'

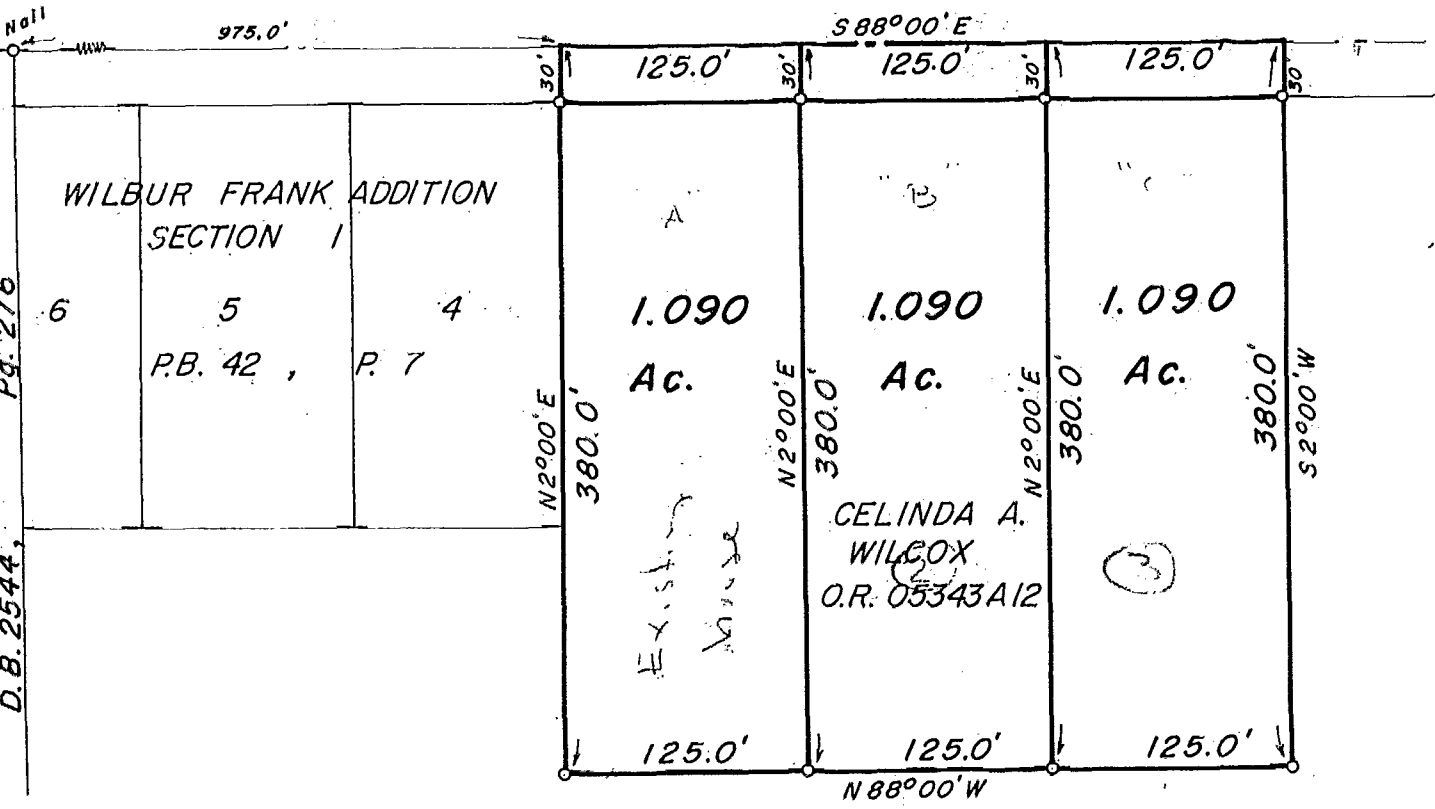
o = Iron Pin  
March 14, 1967  
Revised November 14, 1986

DEED BOOK 1757, PAGE 313  
PLAT BOOK \_\_\_\_\_, PAGE \_\_\_\_\_

### WALNUT ST.

11-53-E

Evelyn D. McElwee  
D.B. 1667, Pg. 540  
D.B. 2544, Pg. 276



WILBUR FRANK ADDITION  
SECTION 1  
6 5 4  
P.B. 42, P. 7

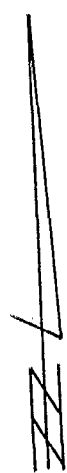
A 1.090 Ac.  
B 1.090 Ac.  
C 1.090 Ac.

CELINDA A. WILCOX  
O.R. 05343A12

Existing  
Mise

3

Wilber W. & Clara M. Frank  
D.B. 1757, P. 313



We hereby certify that the foregoing plat was prepared from an actual survey of the premises and shows the location of the boundaries

EVANS MECHWART HAMBLETON & TILTON, INC.

BY GE Evans  
Registered Surveyor # 483

11-53-E