

88607650

P. 02



SURVEY OF 2.865 ACRE PARCEL
LOCATED IN THE SOUTH HALF OF LOT 17 OF THE SOUTHWEST QUARTER OF SECTION 9
QUARTER TOWNSHIP 1, TOWNSHIP 2, RANGE 16
UNITED STATES MILITARY LANDS
VILLAGE OF NEW ALBANY, FRANKLIN COUNTY, OHIO

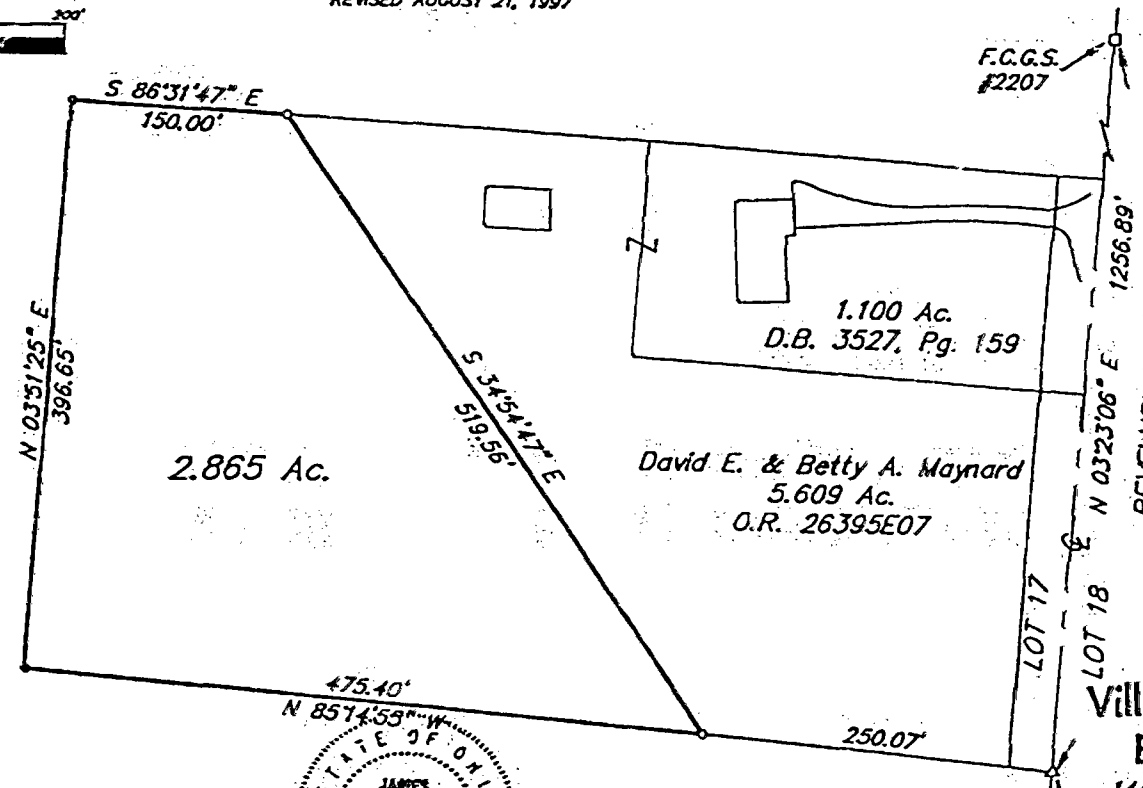
SCALE 1" = 100'

JULY 2, 1997
REVISED AUGUST 21, 1997

RECORD REFERENCES O.R. 26395E07



GRAPHIC SCALE
(IN FEET)



Carroll E. & Virginia A. Dean
O.R. 5502B12

David E. & Betty A. Maynard
5.609 Ac.
O.R. 26395E07

1.100 Ac.
D.B. 3527, Pg. 159

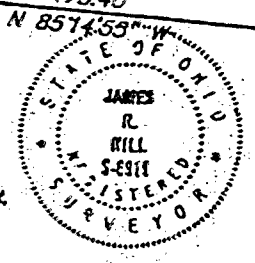
- △ = R.R. Spl. Fnd.
- △ = P.K. Nail Fnd.
- = LP. Fnd.
- = LP. Set

LP. Set are 3/4" O.D. Iron Pin
30" long w/cap incised ELI/MAT
19 FEB 98

Village of New Albany
Building & Zoning

1447.14' Newman
EMH&T, INC.
AS LOT SPLIT

BASIS OF BEARINGS: The bearings shown hereon are based on the Ohio State Plane Coordinate System as per HAD83. Control for bearings was from coordinates of monuments numbers 2206 & 2207, in which the centerline of Bevelheimer Road has a bearing of North 323°06' East, established by the Franklin County Engineering Department, using Global Positioning System procedures and equipment.



F.C.G.S. #2205
CENTRAL COLLEGE ROAD

By James R. Hill
Professional Surveyor No. 6918

Feb-18-98 11:43A
Plotted by CD - July 04, 1997 - 8:08 AM