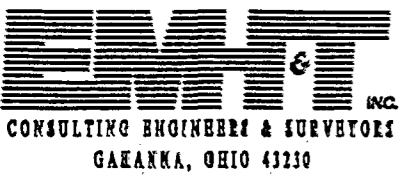


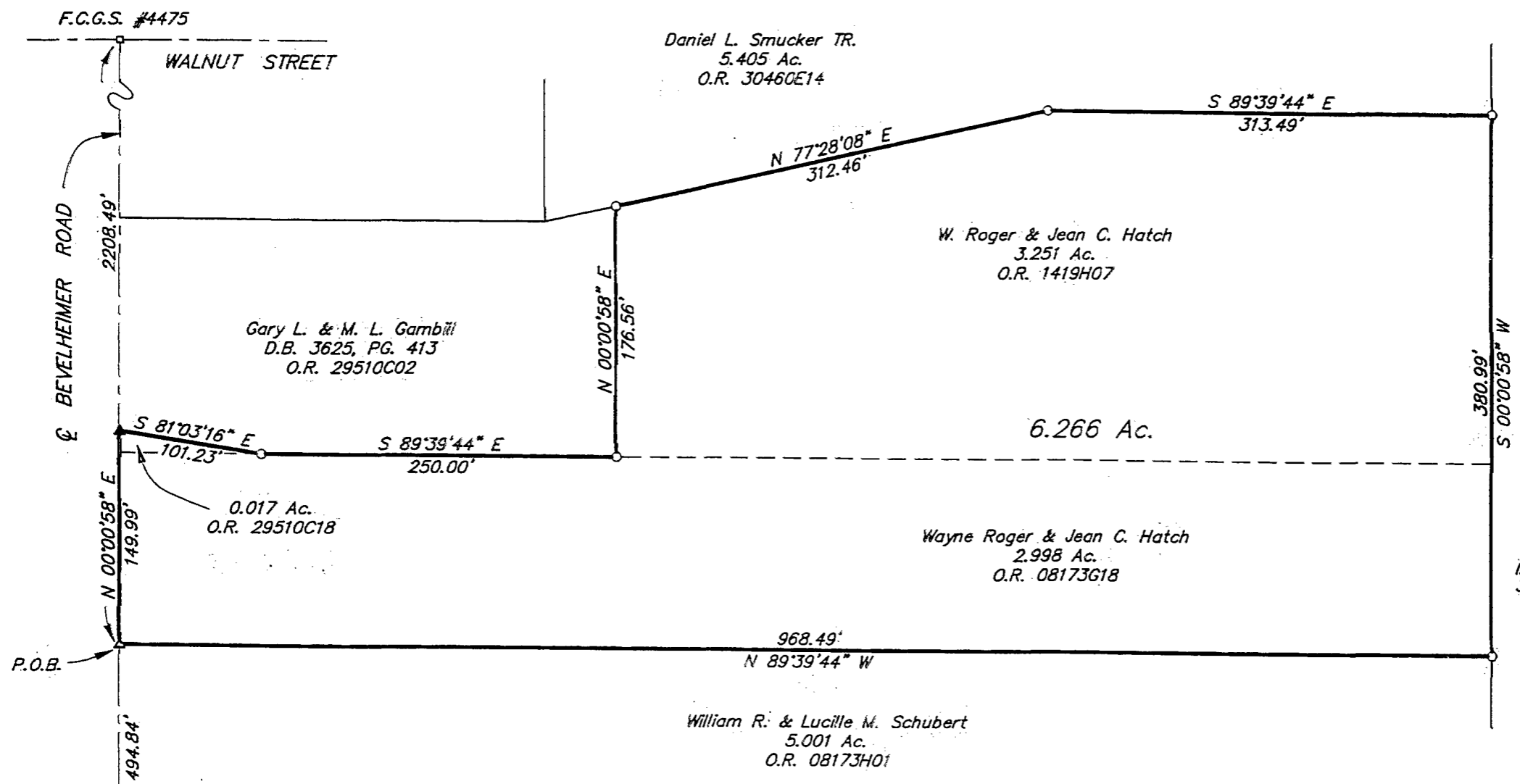
PLAIN

220-887
88607650

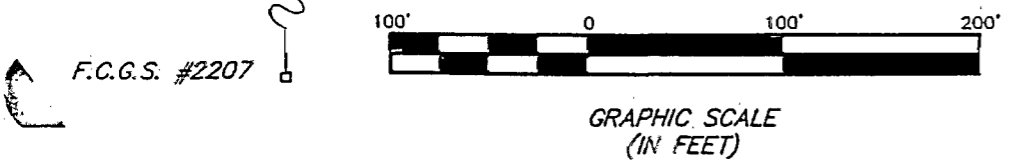
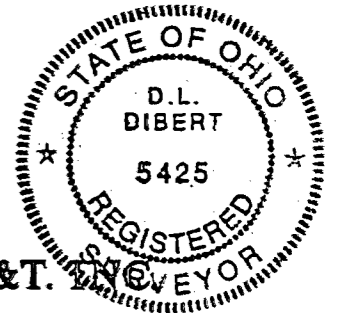
SURVEY OF 6.266 ACRES LOCATED IN QUARTER TOWNSHIP 1, TOWNSHIP 2, RANGE 16 UNITED STATES MILITARY LANDS PLAIN TOWNSHIP, FRANKLIN COUNTY, OHIO



SCALE 1" = 100' DECEMBER 3, 1996 RECORD REFERENCES O.R. 29510C18, 08173G18 & 1419H07



▲ = R.R. Spk. Fnd.
 △ = R.R. Spk. Set
 ○ = I.P. Fnd.
 ○ = I.P. Set
 I.P. Set are 3/4" O.D. Iron Pin
 30" long w/cap Inscribed E.M.H.&T.



BASIS OF BEARINGS: The bearings shown hereon are based on a meridian in which the centerline of Bevelheimer Road has a bearing of North 0°00'58" East as shown of record in Official Record 2029A15, Recorder's Office, Franklin County, Ohio.

By Donald L. Dibert
Professional Surveyor No. 5425