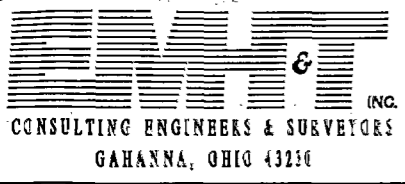


87357600

O-75-B
PLANE TRNG.

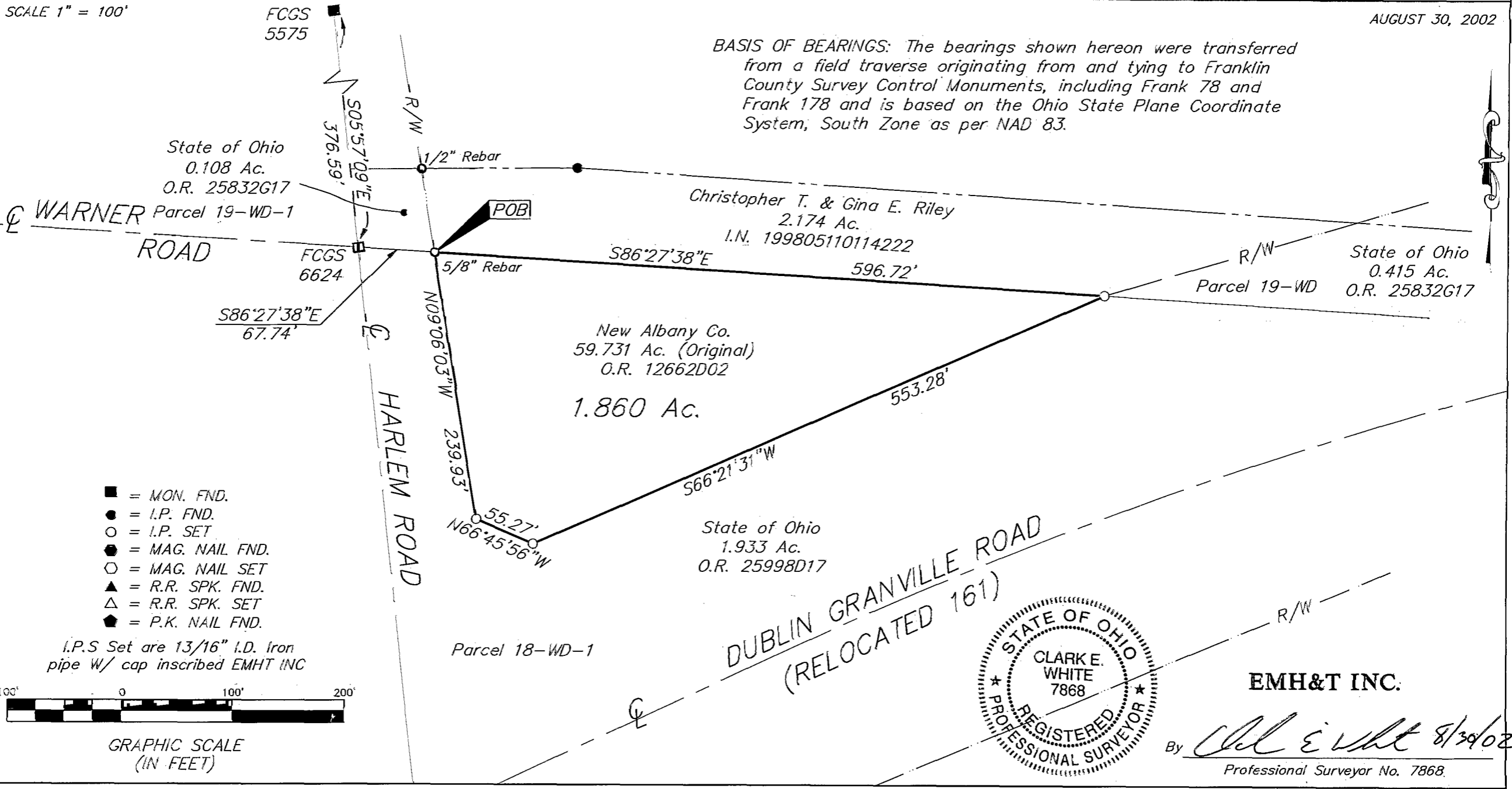


SURVEY OF ACREAGE PARCEL
LOCATED IN
QUARTER TOWNSHIP 3, TOWNSHIP 2, RANGE 16
UNITED STATES MILITARY LANDS
CITY OF COLUMBUS, FRANKLIN COUNTY, OHIO

SCALE 1" = 100'

AUGUST 30, 2002

BASIS OF BEARINGS: The bearings shown hereon were transferred from a field traverse originating from and tying to Franklin County Survey Control Monuments, including Frank 78 and Frank 178 and is based on the Ohio State Plane Coordinate System, South Zone as per NAD 83.



State of Ohio
0.108 Ac.
O.R. 25832G17

Christopher T. & Gina E. Riley
2.174 Ac.
I.N. 199805110114222

State of Ohio
0.415 Ac.
Parcel 19-WD
O.R. 25832G17

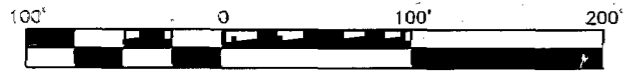
New Albany Co.
59.731 Ac. (Original)
O.R. 12662D02

1.860 Ac.

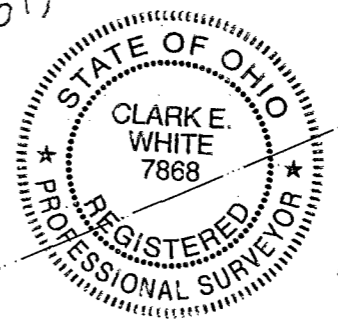
State of Ohio
1.933 Ac.
O.R. 25998D17

- = MON. FND.
- = I.P. FND.
- = I.P. SET
- = MAG. NAIL FND.
- = MAG. NAIL SET
- ▲ = R.R. SPK. FND.
- △ = R.R. SPK. SET
- ◆ = P.K. NAIL FND.

I.P.S Set are 13/16" I.D. Iron pipe w/ cap inscribed EMHT INC



GRAPHIC SCALE
(IN FEET)



EMH&T INC.

By *Clarke E. White* 8/30/02
Professional Surveyor No. 7868

Q:\PROJECT\20021300\DWG\21300BVI.DWG - 0 XREFS - PLOTTED BY JIMACLEAN August 30, 2002 - 8:58 AM