



SURVEY OF ACREAGE PARCEL

LOTS 14 & 27 QTR TWP 2 TWP 2 RNG 16 USML
CITY OF COLUMBUS, FRANKLIN COUNTY, OHIO

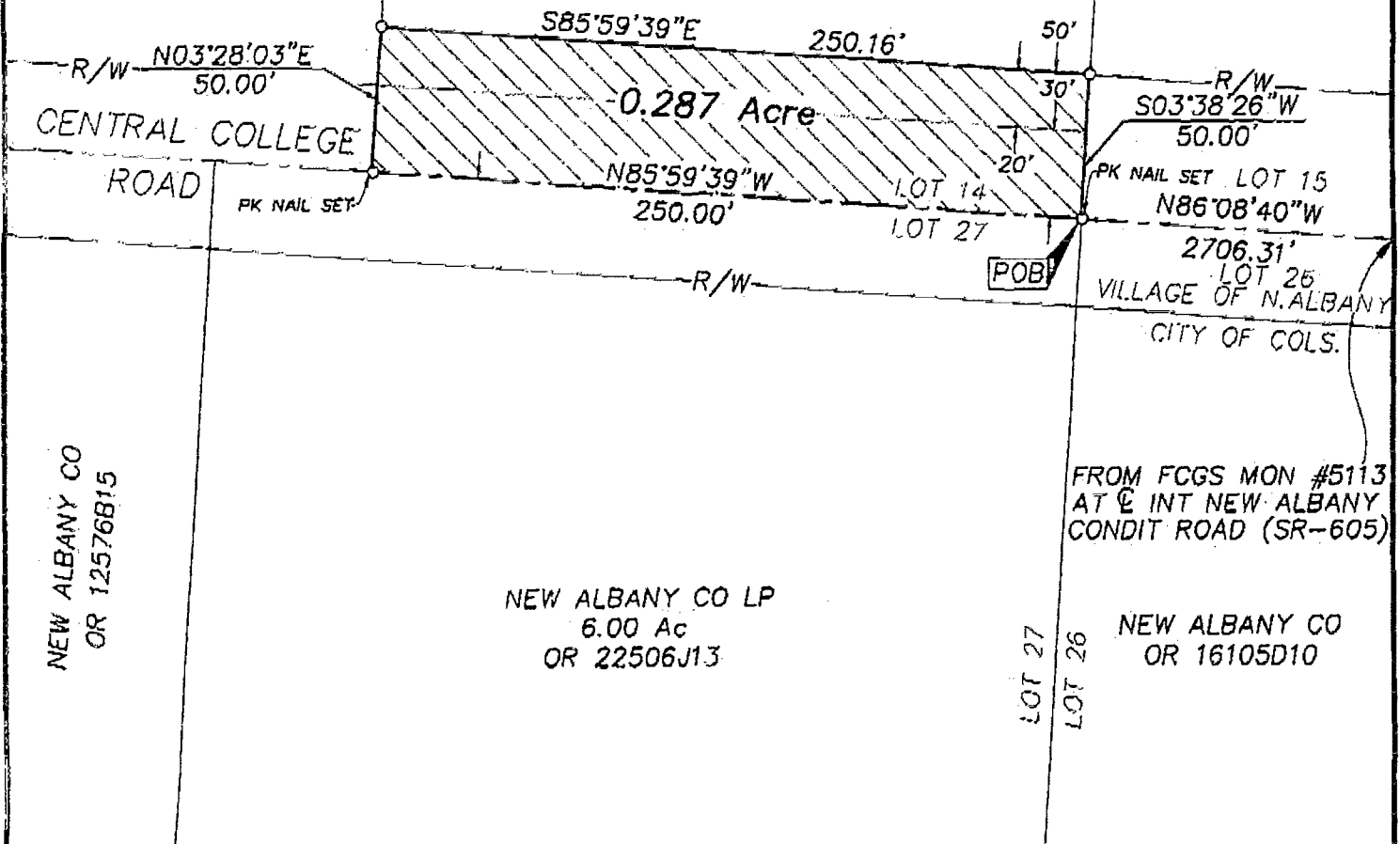
SCALE 1" = 60'

AUGUST 25, 1998

WARREN L WHEELER
DB 3713 PG 443

CENTRAL LTD
DB 3710 PG 420

CAMPUS
DEVELOPMENT
CO LLC
IN 199801070004589

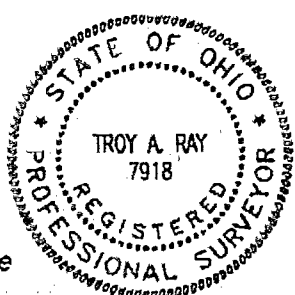


NEW ALBANY CO
OR 12576B15

NEW ALBANY CO LP
6.00 Ac
OR 22506J13

FROM FCGS MON #5113
AT E INT NEW ALBANY
CONDIT ROAD (SR-605)

NEW ALBANY CO
OR 16105D10



- ▲ = R.R. SPK. FND.
- △ = R.R. SPK. SET
- = I.P. FND.
- = I.P. SET

I.P.S Set are 13/16" I.D. Iron pipe W/ cap inscribed EMH&T.

The Basis of bearing for this drawing is the centerline of Central College Road as being North 86°08'40" West as shown on that plat entitled "NEW ALBANY ROAD EAST, CENTRAL COLLEGE ROAD and NEW ALBANY-CONDIT ROAD DEDICATION AND EASEMENTS" of record in Plat Book 86, Pages 78 and 79, Recorder's Office, Franklin County, Ohio.

E.M.H.&T. INC.

By Troy A. Ray 8/25/98
Professional Surveyor No. 7918

87 607 625