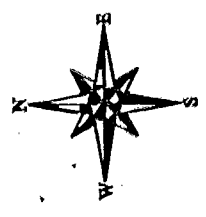


0-75-C  
 PLAIN  
 187 607 600

**SURVEY OF 0.429 ACRE TRACT**  
 LOCATED IN QUARTER TOWNSHIP 3, TOWNSHIP 2, RANGE 16  
 UNITED STATES MILITARY LANDS  
 CITY OF COLUMBUS, FRANKLIN COUNTY, OHIO

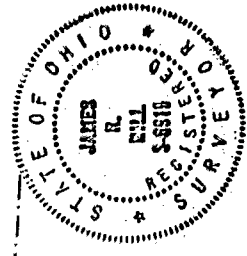
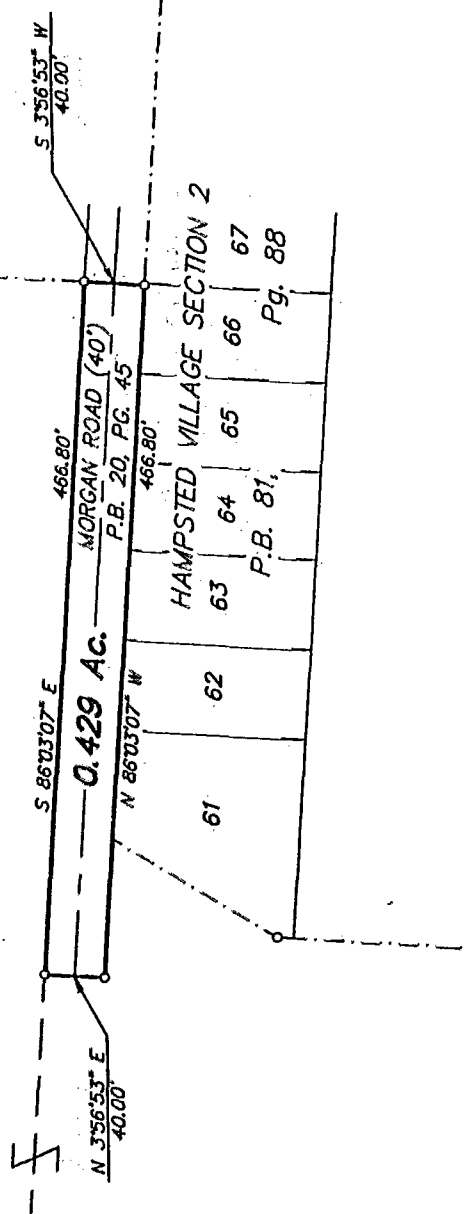
SCALE 1" = 100'      IRON PIN      RECORD REFERENCES



GRAPHIC SCALE  
 (IN FEET)

M/S SCHOTTENSTEIN HOMES INC.  
 12.474 AC.

THE NEW ALBANY COMPANY  
 LIMITED PARTNERSHIP  
 O.R. 12773601



**E.M.H.&T. INC.**

By *James R. Hill*  
 Professional Surveyor No. 6919

BLUES OF BEARINGS: Bearings are based on the Ohio State Plane Coordinate System as per NADEL. Control for bearings was from monuments, Frank 79 and Frank 172 established by the Franklin County Engineering Department using Global Positioning System procedures and equipment.