



SCALE 1" = 200'

PLAT OF 1.617 ACRE TRACT  
LOCATED IN  
QUARTER TOWNSHIP 3, TOWNSHIP 2, RANGE 1  
UNITED STATES MILITARY LANDS  
CITY OF COLUMBUS, COUNTY OF FRANKLIN, STATE OF OHIO

MARCH 5, 1993  
REVISED MARCH 25, 1993

RECORD REFERENCES OR 14284

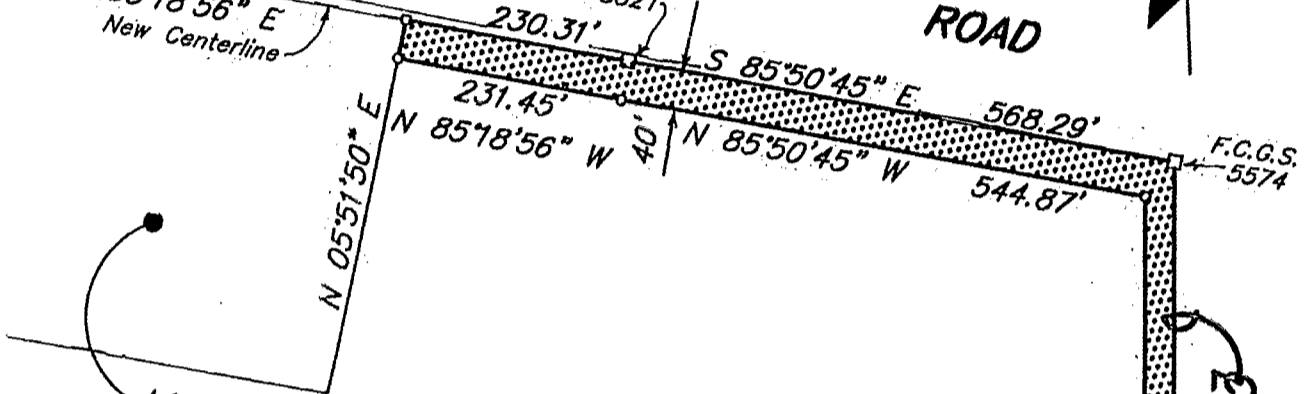


CENTRAL COLLEGE

Old Centerline  
S 85°18'56" E  
New Centerline

F.C.G.S. 8821

ROAD



M.D. & R. PIPER  
D.B. 3533, PG. 540  
D.B. 3623, PG. 636

1.617 AC.

WANGO INVESTMENTS  
OR14284 J 01

HARLEM ROAD

BASIS OF BEARINGS :  
Bearings are based on The Ohio State Plane Coordinate System as per NAD83. Control for bearings was from coordinates of monuments established by the Franklin County Engineering Department, using Global Positioning System procedures and equipment.

0-73-H

N 86°45'04" W  
30.37'  
T.P. & C.R. FISHER  
D.B. 3467, PG. 738

E.M.H.&T. INC.

F.C.G.S. 5575

BY *Donald E. Ober*  
Professional Surveyor No. 5425