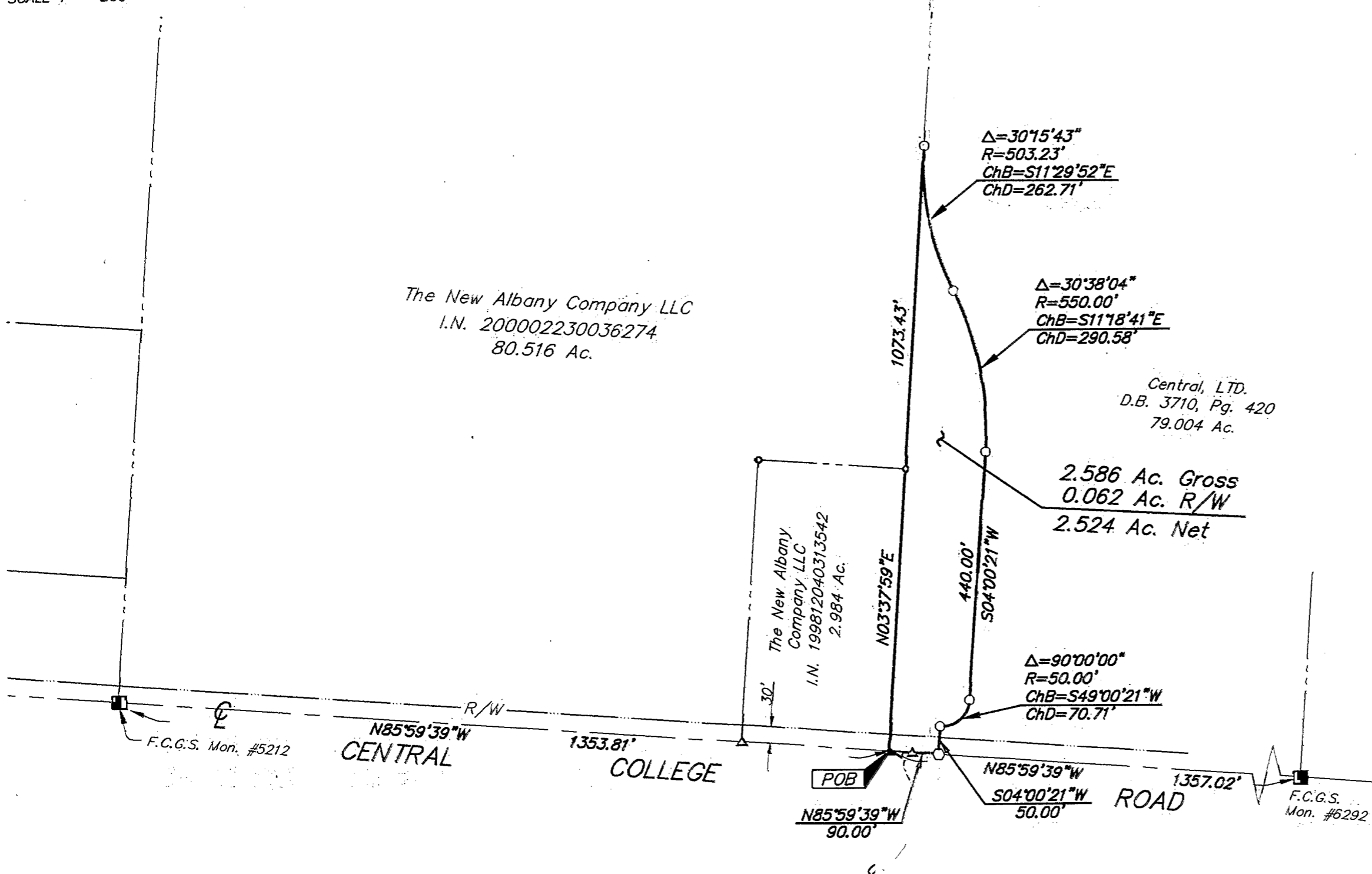


**SURVEY OF ACREAGE PARCEL**  
SECTION 7, QUARTER TOWNSHIP 2, TOWNSHIP 2, RANGE 16  
UNITED STATES MILITARY LANDS  
CITY OF COLUMBUS, FRANKLIN COUNTY, OHIO

SCALE 1" = 200'

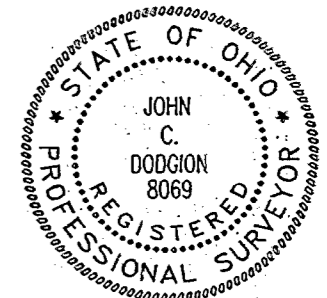
DECEMBER 04, 2001



- = MON. FND.
- = I.P. FND.
- = I.P. SET
- = MAG. NAIL FND.
- = MAG. NAIL SET
- ▲ = R.R. SPK. FND.
- △ = R.R. SPK. SET
- ◆ = P.K. NAIL FND.

I.P.S. Set are 13/16" I.D. Iron pipe w/ cap inscribed EMH&T, Inc.

GRAPHIC SCALE (IN FEET)



**BASIS OF BEARINGS :** Bearings are based on The Ohio State Plane Coordinate System as per NAD83. Control for bearings was from coordinates of Franklin County Geodetic Survey Monument Nos. 5574 and 5113, as established by the Franklin County Engineering Department.

**E.M.H.&T. INC.**

By *John C. Dodgion*  
Professional Surveyor No. 8069

Q:\PROJECT\20011718.01\DWG\11718BV.DWG -- PLOTTED BY JBUSHBY -- November 29, 2001 -- 2:27 PM