

**PLAT OF 10.630 ACRES & 1.032 ACRES**  
 LOCATED IN  
 QUARTER TOWNSHIP 3, TOWNSHIP 2, RANGE 16  
 UNITED STATES MILITARY LANDS  
 CITY OF COLUMBUS, COUNTY OF FRANKLIN, STATE OF OHIO

SCALE 1" = 200'

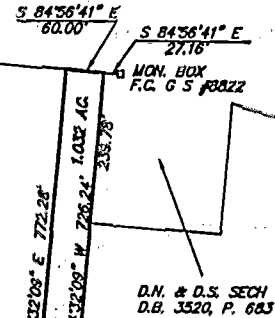
MARCH 26, 1993

RECORD REFERENCES O.R. 14284J01

CENTRAL COLLEGE ROAD



Iron Pin

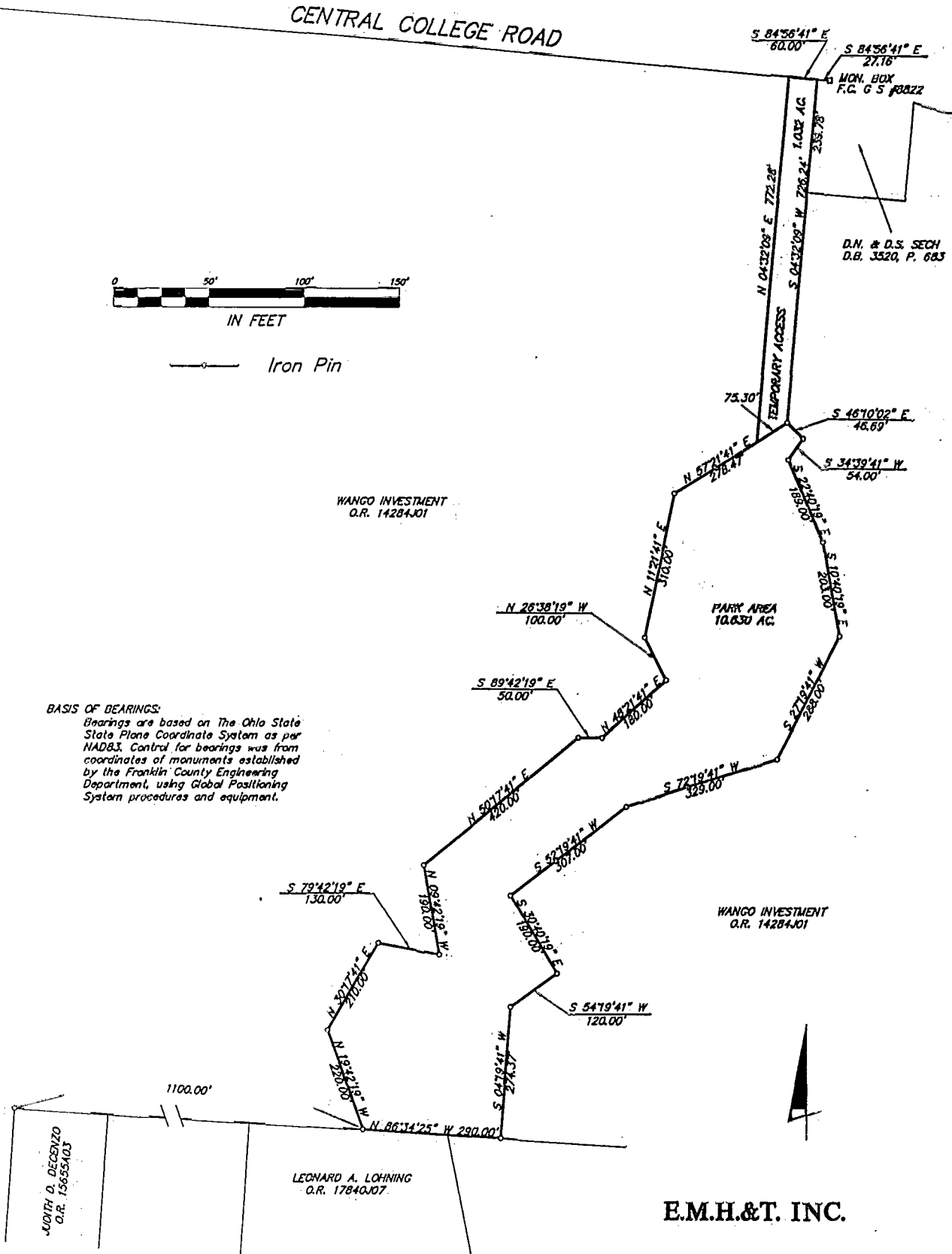


WANGO INVESTMENT  
 O.R. 14284J01

PARK AREA  
 10.630 AC.

**BASIS OF BEARINGS:**

Bearings are based on The Ohio State State Plane Coordinate System as per NAD83. Control for bearings was from coordinates of monuments established by the Franklin County Engineering Department, using Global Positioning System procedures and equipment.



JOHN D. DECENZO  
 O.R. 15655A03

LEONARD A. LOHNING  
 O.R. 1784J07

**E.M.H.&T. INC.**

By Ornael R. Wilbert  
 Professional Surveyor No. 5425

187107625  
 Q-73-6