



187107625

PLAT OF 0.140 ACRE TRACT

LOCATED IN
QUARTER TOWNSHIP 3, TOWNSHIP 2, RANGE 16
UNITED STATES MILITARY LANDS
CITY OF COLUMBUS, COUNTY OF FRANKLIN, STATE OF OHIO

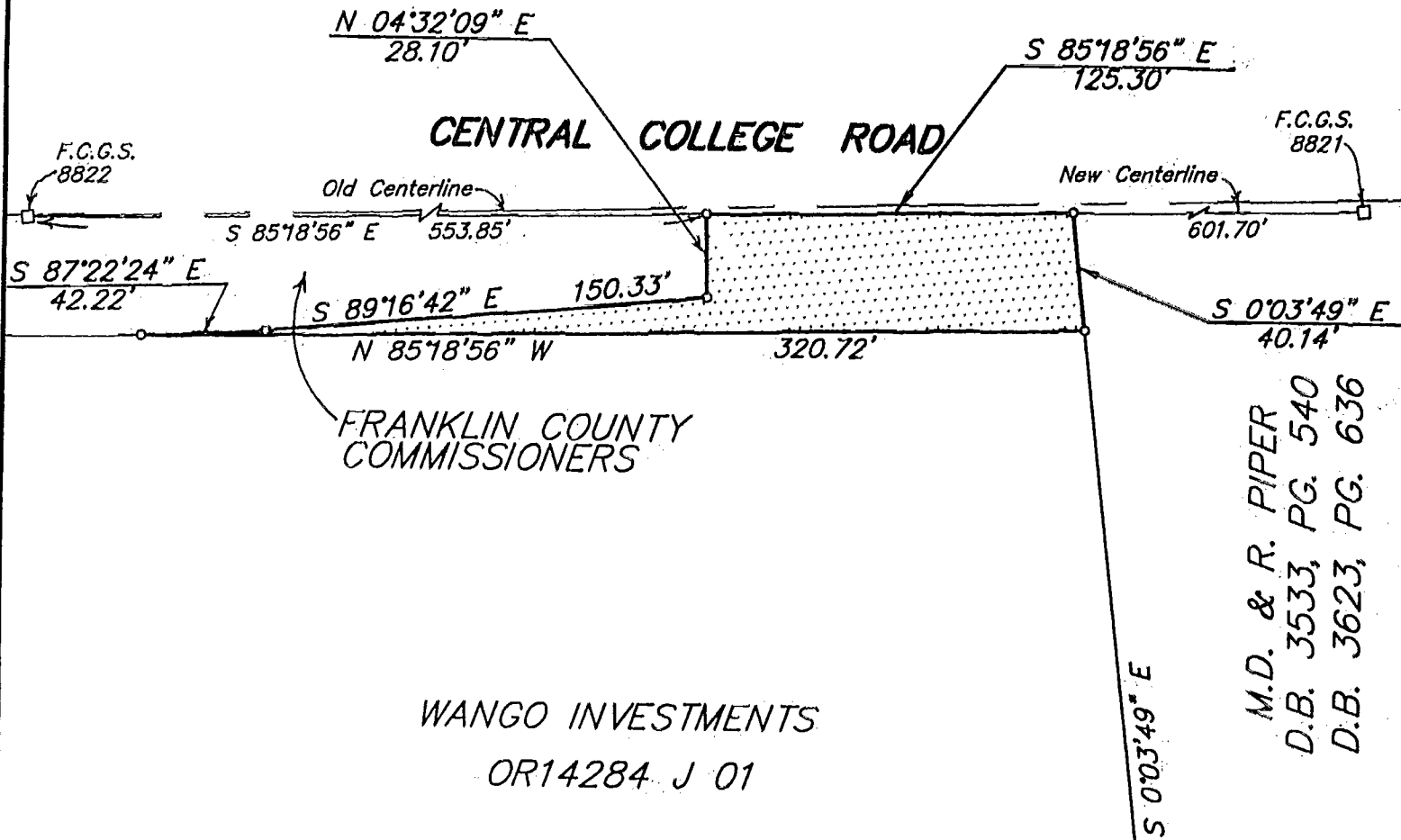
SCALE 1" = 60'

MARCH 5, 1993
REVISED MARCH 24, 1993

RECORD REFERENCES OR 14284 J 01



IN FEET



BASIS OF BEARINGS :
 Bearings are based on The Ohio State Plane Coordinate System as per NAD83. Control for bearings was from coordinates of monuments established by the Franklin County Engineering Department, using Global Positioning System procedures and equipment.

E.M.H.&T. INC.

by *Ronald L. Robert*
 Professional Surveyor No. 3423

0-73-11
H-3-L-0