



SURVEY OF 3.511 ACRE TRACT

LOCATED IN N.E. QUARTER SECTION 7,
QUARTER TOWNSHIP 2, TOWNSHIP 2, RANGE 16
UNITED STATES MILITARY LANDS
PLAIN TOWNSHIP, FRANKLIN COUNTY, OHIO

SCALE 1" = 100'

DECEMBER 14, 1995

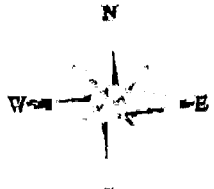
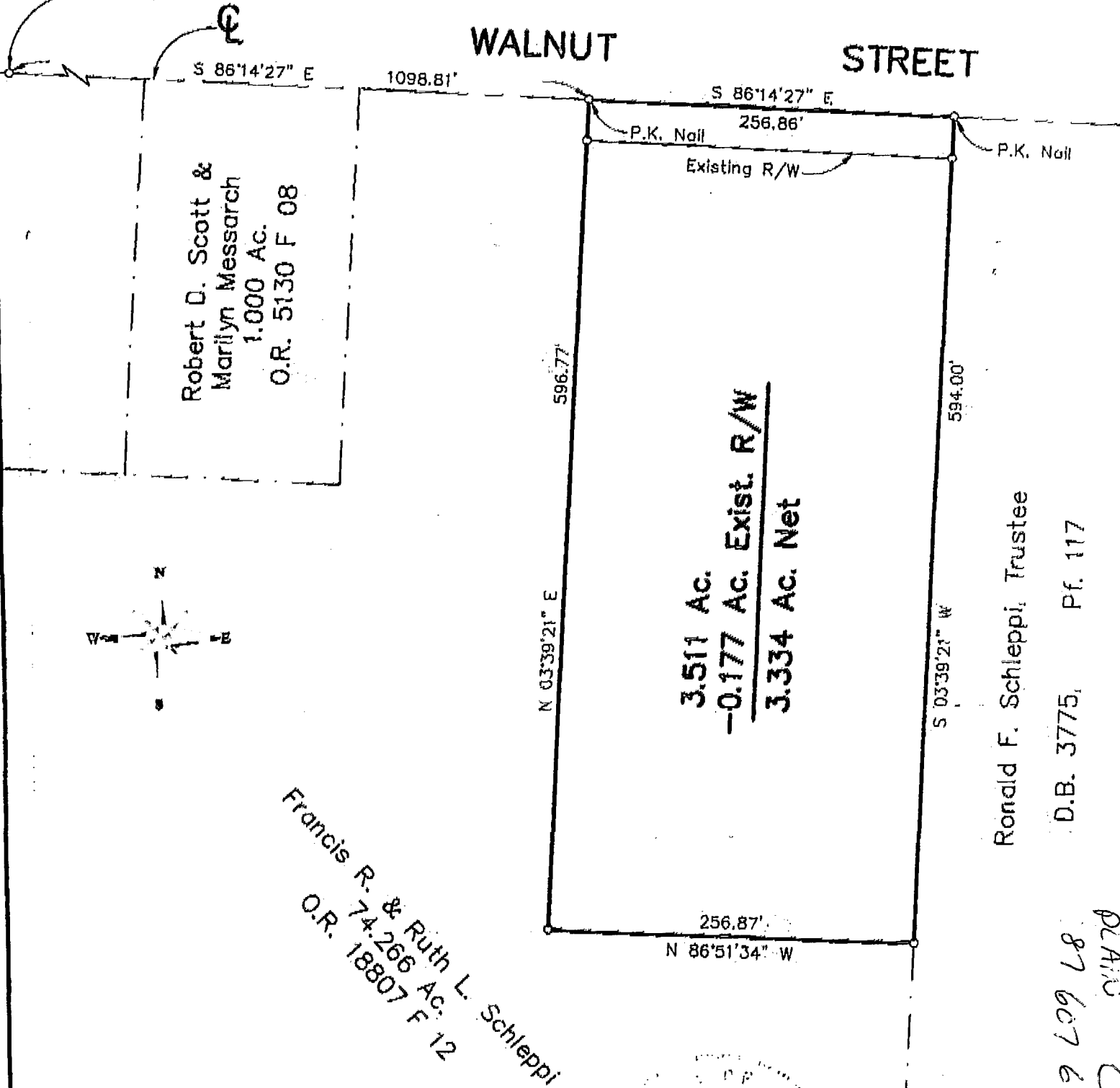
RECORD REFERENCES



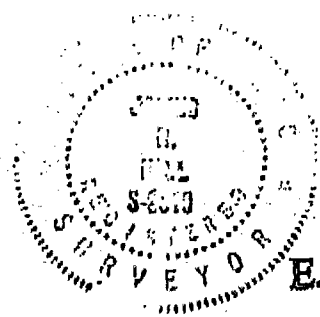
- ▲ = R.R. Spk. Fnd.
- △ = RR Spk. Set
- = I.P. Fnd.
- = I.P. Set

I.P. Set are 3/4" P.D. Iron Pin
30" long w/cap inscribed EMH&T.

N.W. Corner of
N.E. Quarter
Section 7



BASIS OF BEARINGS : Bearings are based on The Ohio State Plane Coordinate System as per NAD83. Control for bearings was from coordinates of monuments Frank 80 & 180 established by the Franklin County Engineering Department, using Global Positioning System Procedures and equipment.



E.M.H.&T. INC.

By *James R. Hill*
Professional Surveyor No. 6919

PLAN 0-73-F
87 607 675
519 609 18