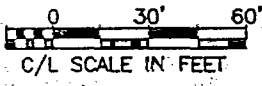




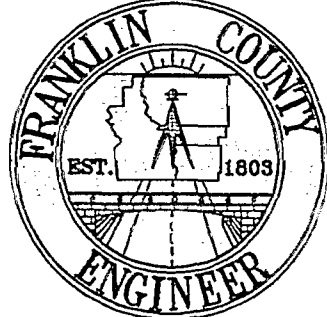
GRID NORTH



SURVEY OF A 1.932 ACRE TRACT SECTION 1, TOWNSHIP 2 NORTH, RANGE 17 WEST, UNITED STATES MILITARY LANDS

BLENDON TOWNSHIP,
FRANKLIN COUNTY, OHIO

KENT S. ELLERMETS
AND
VALERIE A. ELLERMETS
1.434 AC.
O.R.15798H13



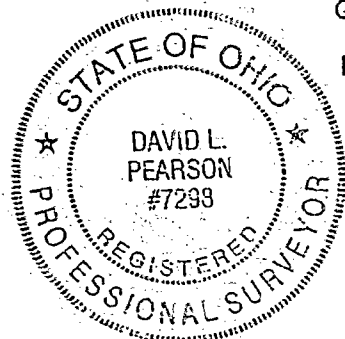
NOTE:
REBARS SET ARE 5/8" REBAR WITH YELLOW PLASTIC
CAPS STAMPED "FRANKLIN COUNTY ENGINEER".

BASIS OF BEARINGS:

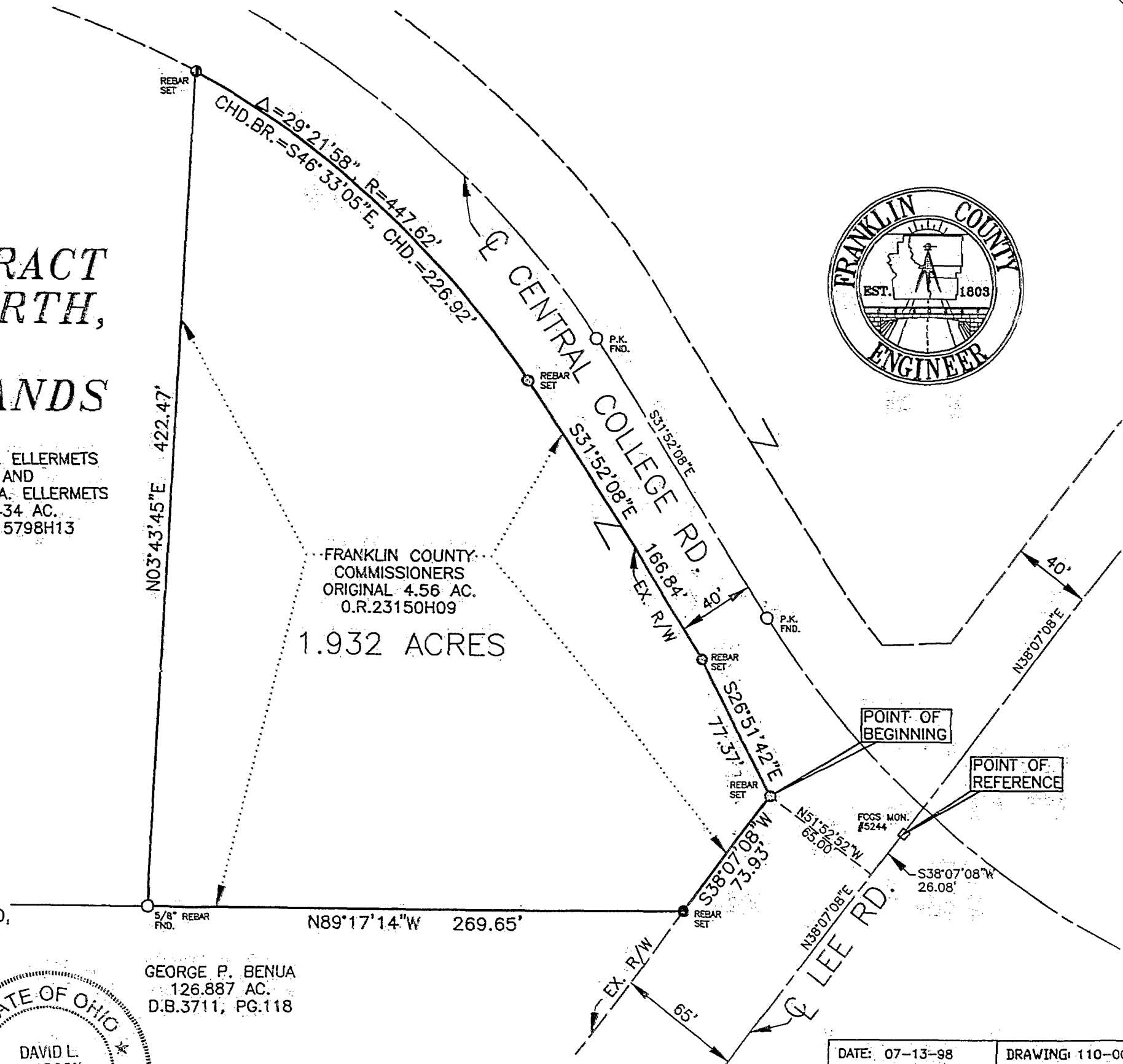
BEARINGS SHOWN HEREON ARE BASED ON THE BEARINGS AS SHOWN IN THE
CENTERLINE SURVEY PLAT FOR ULRY ROAD, LEE ROAD & CENTRAL COLLEGE ROAD,
ON RECORD IN THE FRANKLIN COUNTY ENGINEER'S OFFICE.

THIS PLAT WAS PREPARED FROM AN ACTUAL FIELD SURVEY PERFORMED
BY THE FRANKLIN COUNTY ENGINEER'S OFFICE, ALONG WITH PUBLIC
RECORDS ON FILE IN THE FRANKLIN COUNTY RECORDER'S OFFICE AND
THE FRANKLIN COUNTY ENGINEER'S OFFICE

David L. Pearson 7-14-98
DAVID L. PEARSON DATE
OHIO REGISTERED SURVEYOR NO.7298



GEORGE P. BENUA
126.887 AC.
D.B.3711, PG.118



DATE: 07-13-98		DRAWING: 110-001165	
		DRAWN BY: DKT	
REVISIONS			
DATE	DESCRIPTION	BY	