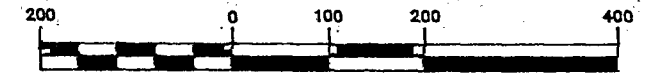
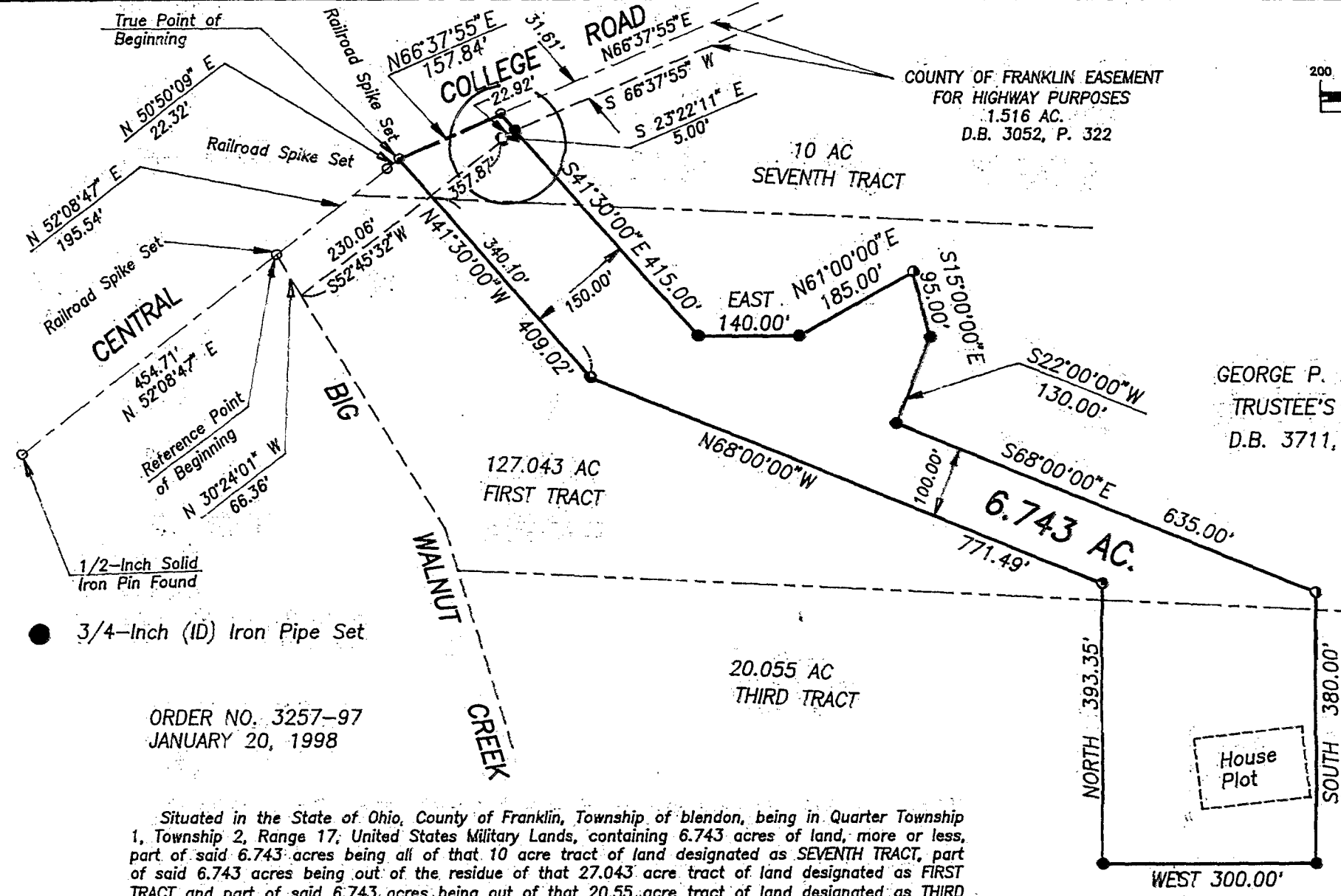
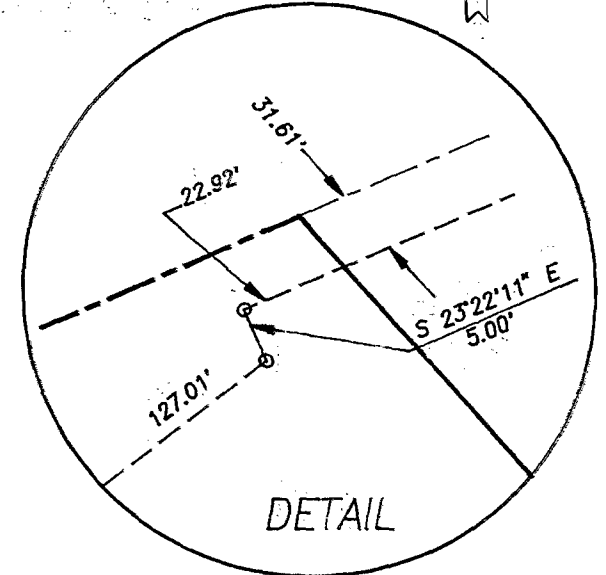


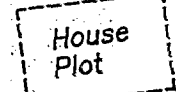
GRAPHIC SCALE



(IN FEET)
1 inch = 200 ft.



GEORGE P. BENUA
TRUSTEE'S DEED
D.B. 3711, P. 118



BAUER, DAVIDSON & MERCHANT, INC.
Consulting Engineers

By *Jimmie L. Davis*
Jimmie L. Davis,
Professional Surveyor No. 6942



BOUNDARY SURVEY MAP OF 6.743 ACRES OF LAND LOCATED ON THE SOUTHERLY SIDE OF CENTRAL COLLEGE ROAD AND EAST OF BIG WALNUT CREEK, IN THE TOWNSHIP OF BLENDON, COUNTY OF FRANKLIN, STATE OF OHIO.

ORDER NO. 3257-97
JANUARY 20, 1998

Situated in the State of Ohio, County of Franklin, Township of Blendon, being in Quarter Township 1, Township 2, Range 17, United States Military Lands, containing 6.743 acres of land, more or less, part of said 6.743 acres being all of that 10 acre tract of land designated as SEVENTH TRACT, part of said 6.743 acres being out of the residue of that 27.043 acre tract of land designated as FIRST TRACT and part of said 6.743 acres being out of that 20.55 acre tract of land designated as THIRD TRACT, as said tracts are described in the Trustee's deed to George P. Benua, of record in Deed Book 3052, Page 322, Recorder's Office, Franklin County, Ohio.

We hereby state that this map was prepared from information obtained from an actual field survey of the premises conducted by Bauer, Davidson & Merchant, Inc. in November and December of 1997 and in January of 1998.

All of the survey markers noted on this map were in place in January of 1998.

The bearings shown on this map are based upon the bearing of N 3°35'16" E as given for the centerline of Utry Road in the deed to the Franklin County Commissioners (PARCEL NO. 23 WD - 2.886 acres), of record in Official Record 27622C18, Recorder's Office, Franklin County, Ohio.

BAUER, DAVIDSON & MERCHANT, INC.
Consulting Engineers

255 Green Meadows Drive S.
P.O. Box 370
Powell, Ohio 43065
(614) 848-3393