

MYERS SURVEYING CO.

2740 East Main Street, Columbus 43209 (Bexley), Ohio

Being part of a 2.647 acre tract conveyed to Robert L. and Joan E. Moor shown of record in Deed Book 2973, Page 133, Recorder's Office, Franklin County, Ohio, and being a part of Quarter Township 1, Township 2, Range 17, United States Military Lands, Elendon Township, Franklin County, Ohio.

FOR

GORDON F. SCHERER

D.B. 3737 Page 560
Scale 1" = 100'

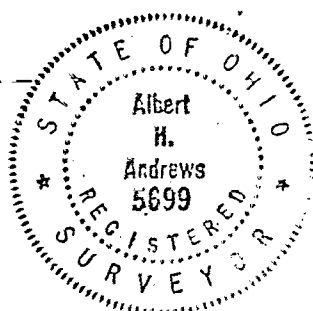
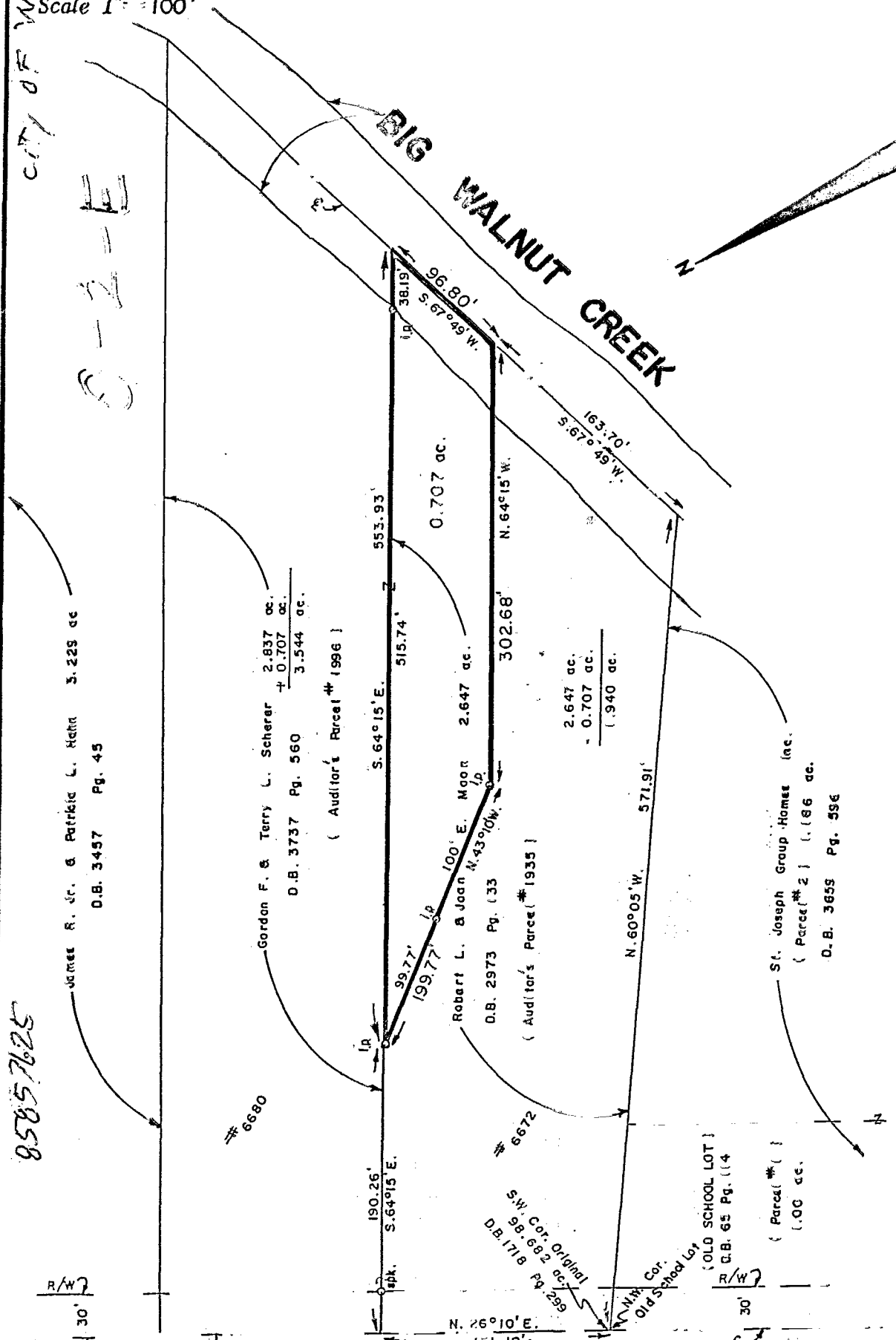
Franklin Co. Rec. Office
July 12, 1982
Rev. August 13, 1982

CITY OF WESTERVILLE

0-2-E

0-2-E

85857625



We hereby certify that the foregoing plat was prepared from an actual survey of the premises.

MYERS SURVEYING CO.

J. H. KEMPER