

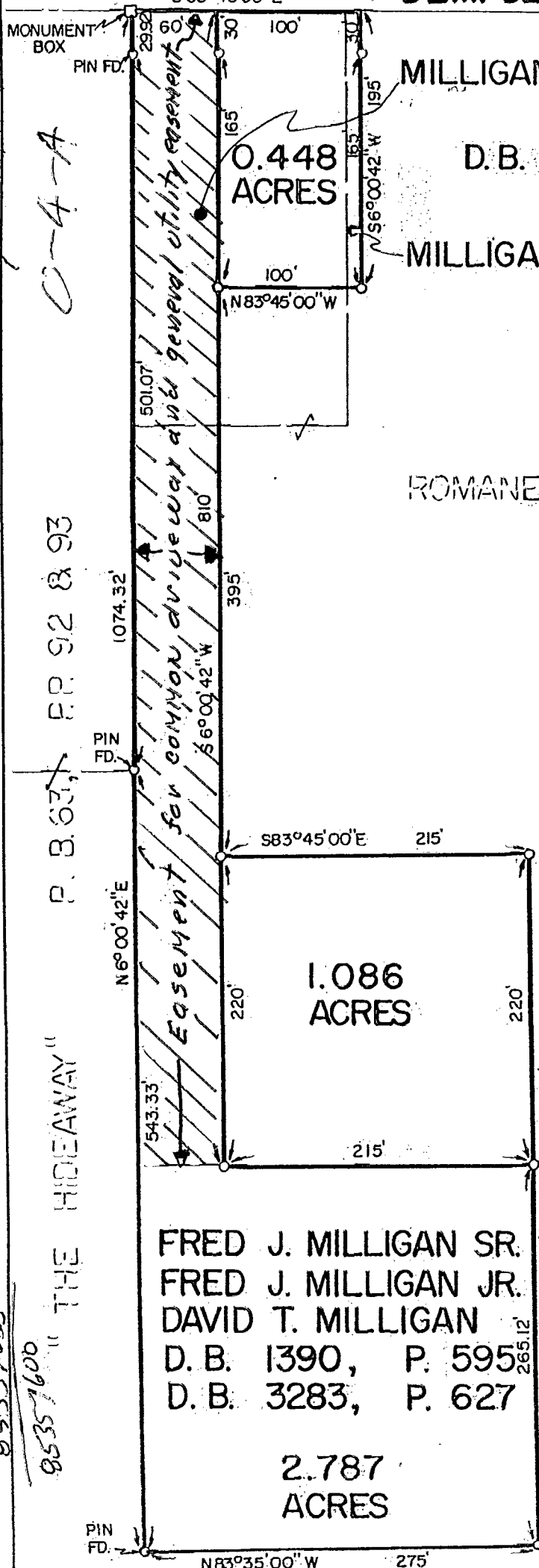
SCALE 1" = 100' AUGUST 5, 1988 RECORD REFERENCES _____

CITY OF WESTERVILLE

0-4-A
 P.P. 92 & 93
 P. B. 637
 "THE HIDEAWAY"
 P.P. 1600
 P. B. 599
 05357625
 05357600

12183607

DEMPSEY ROAD



MILLIGAN, MILLIGAN & MILLIGAN
 0.999 ACRES
 D.B. 3459, P. 410

MILLIGAN, MILLIGAN & MILLIGAN
 O.R. 11815A19

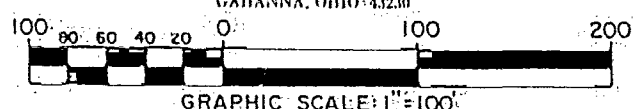
ROMANELLI & HUGHES BUILDING CO.
 9.775 ACRES
 O.R. 11815B11

FRED J. MILLIGAN SR.
 FRED J. MILLIGAN JR.
 DAVID T. MILLIGAN
 D.B. 1390, P. 595
 D.B. 3283, P. 627
 2.787 ACRES

SURVEYED & PLATTED BY



CONSULTING ENGINEERS & SURVEYORS
 GAHANNA, OHIO 43230



The bearings shown hereon are based on the \odot of Dempsey Road, as being S83°45'00"E.

By *Lawrence E. Ball* Aug 8 '88
 Professional Surveyor No. 9878 Date
 Lawrence E. Ball

0-4-A