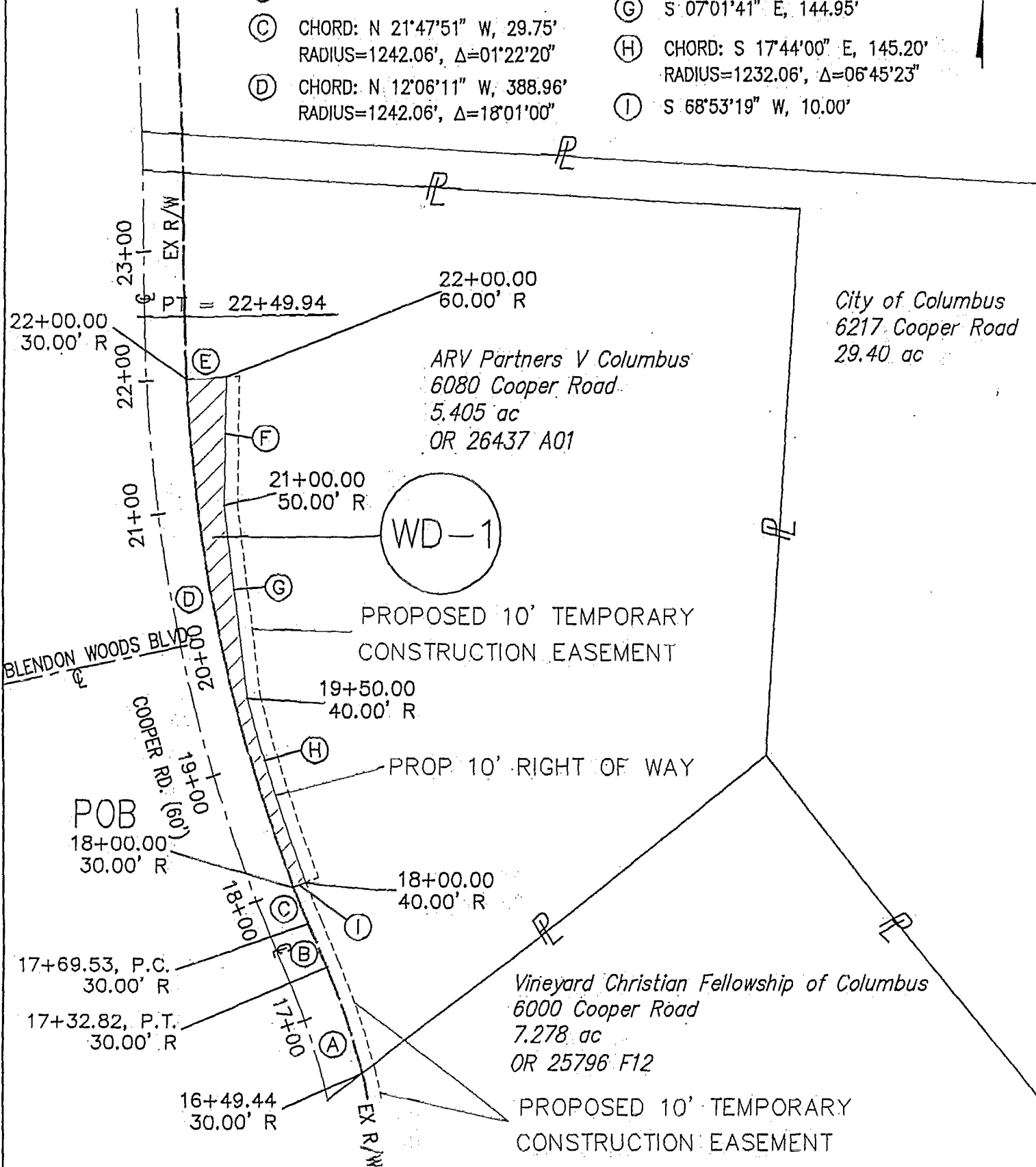


EXHIBIT A



84607625

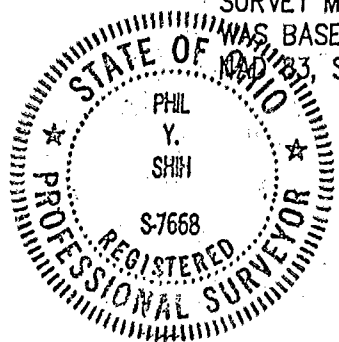
- (A) CHORD: N 17°53'27" W, 88.10'
RADIUS=550.13', Δ=09°11'07"
- (B) N 22°29'01" W, 36.71'
- (C) CHORD: N 21°47'51" W, 29.75'
RADIUS=1242.06', Δ=01°22'20"
- (D) CHORD: N 12°06'11" W, 388.96'
RADIUS=1242.06', Δ=18°01'00"
- (E) N 86°54'19" E, 30.00'
- (F) S 00°37'01" W, 96.15'
- (G) S 07°01'41" E, 144.95'
- (H) CHORD: S 17°44'00" E, 145.20'
RADIUS=1232.06', Δ=06°45'23"
- (I) S 68°53'19" W, 10.00'



I HEREBY CERTIFY THAT THIS PLAT IS BASED ON AN ACTUAL FIELD SURVEY PERFORMED BY COLUMBUS ENGINEERING CONSULTANTS IN 1998.

BASIS OF BEARING WAS THE CENTERLINE OF COOPER ROAD AS BEING N 22°29'01" W AND WAS TRANSFERRED FROM A GPS SURVEY OF FRANKLIN COUNTY GEODETIC SURVEY MONUMENTS WEDIEHL AND GRANDVIEW, AND WAS BASED ON THE STATE PLANE COORDINATE SYSTEM NAD 83, SOUTH ZONE, OHIO.

Phil Y. Shi 2-2-99
 PHIL Y. SHIH
 P.S. No 7668
 DATE



COLUMBUS ENGINEERING CONSULTANTS, INC.
 Consulting Civil Engineers
 840 Michigan Avenue
 Columbus, OH 43215
 TEL (614) 225-3500 FAX (614) 225-2519

BLENDON TWP
 O-3-B