

City of Columbus

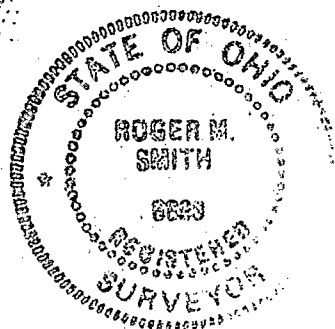
D. B. 1718 PG. 466

25.718 Ac.



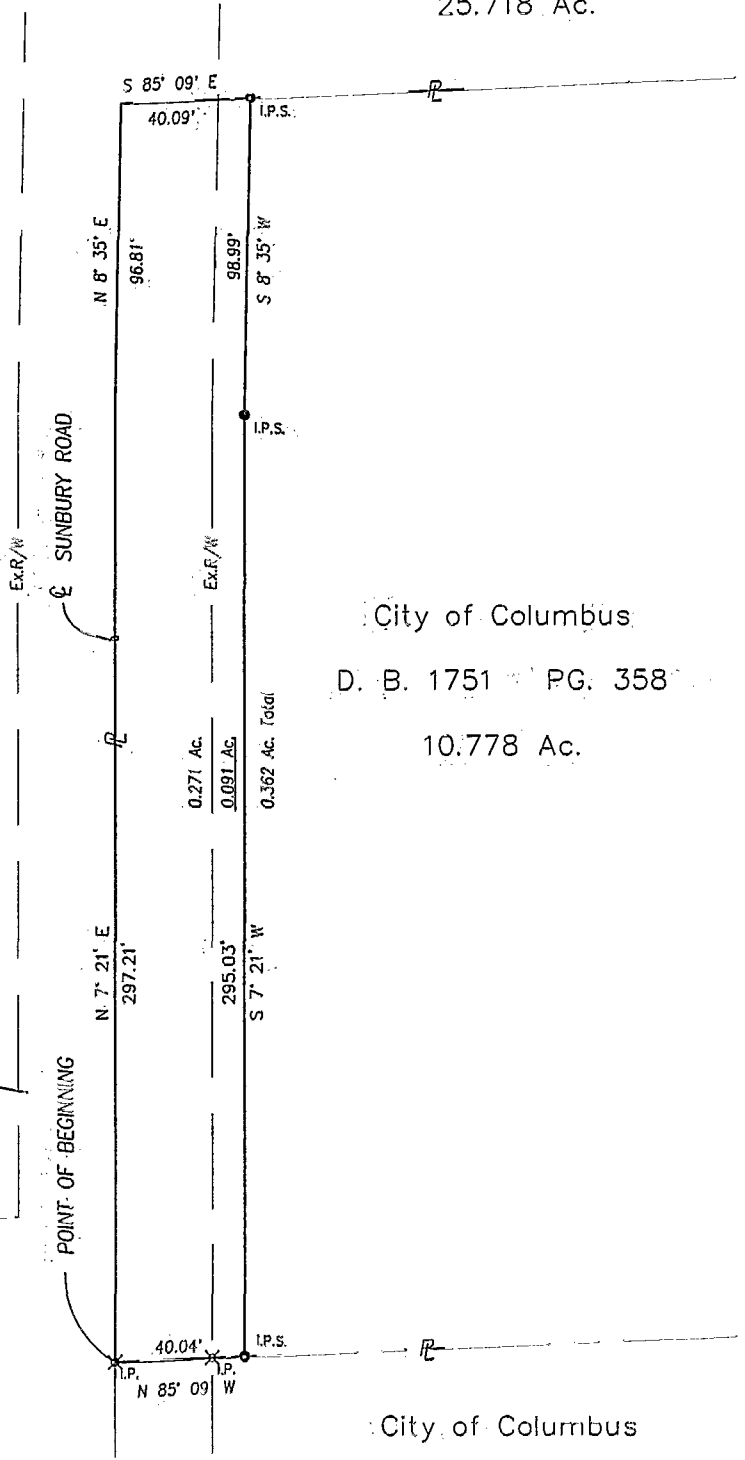
SCALE: 1" = 60'

BASIS FOR BEARING  
AT SW CORNER OF PROPERTY  
C/L SUNBURY ROAD N 7° 21' E



ROGER M. SMITH  
OHIO REGISTERED SURVEYOR  
S-6899

- RAILROAD SPIKE FOUND
- IRON PIN FOUND
- IRON PIN CALL
- IRON PIN PROPOSED



City of Columbus

D. B. 1751 PG. 358

10.778 Ac.

City of Columbus

D. B. 1718 PG. 442

3.87 Ac.

SMITH 11|C8D L:\9063100\PLATS\SHEETS\COC4.DWG 02/16/97 10:12 LTS: 30 PSLIS: 0

PROJECT	SUNBURY ROAD	JOB NO:	9063100
SUBJECT	PROPERTY PLAT	DATE	16 FEB 97
BY	RMS	CHECKED	RMS
SHEET NO. 1 OF 1			

**URS**  
URS CONSULTANTS  
ARCHITECTS • ENGINEERS • PLANNERS

BLENDEN  
85857675