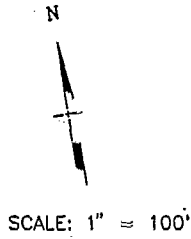


MONTGOME 11D7B L:\9063100\PLATS\SHEETS\COC5.DWG 02/14/97 08:59 LTS: 30 PSLTS: 0

City of Columbus

D. B. 1697 PG. 258

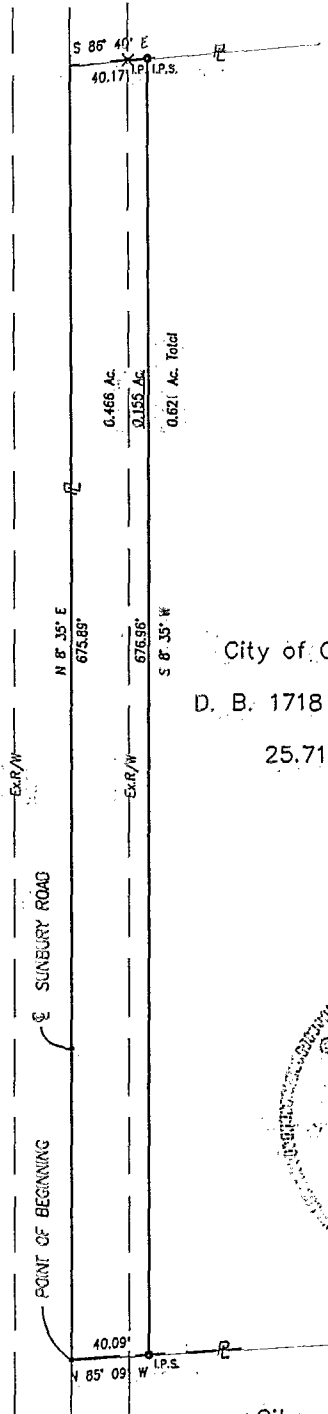
54.718 Ac.



BASIS FOR BEARING, - C/L SUNBURY ROAD N 8° 35' E

ROGER M. SMITH
OHIO REGISTERED SURVEYOR
S-6899

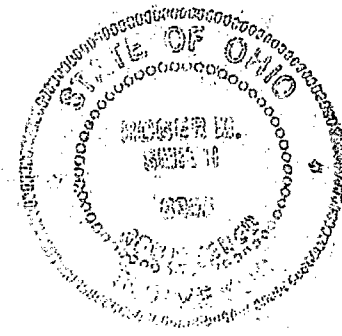
- Δ^{RRSF} RAILROAD SPIKE FOUND
- $\circ_{LP.F.}$ IRON PIN FOUND
- $\times_{LP.}$ IRON PIN CALL
- $\circ_{LP.S.}$ IRON PIN PROPOSED



City of Columbus

D. B. 1718 PG. 466

25.718 Ac.



City of Columbus

D. B. 1751 PG. 358

10.778 Ac.

PROJECT	SUNBURY ROAD	JOB NO.	9063100
SUBJECT	PROPERTY PLAT	DATE	14 FEB 97
BY	RWM	CHECKED	RMS
SHEET NO.		1 OF 1	



URS CONSULTANTS
ARCHITECTS • ENGINEERS • PLANNERS..

BLENDON
85 857 675