

# BAUER, DAVIDSON & MERCHANT, INC.

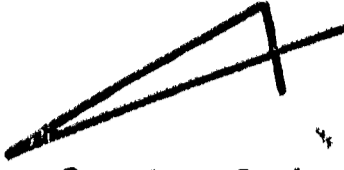
185357650

CONSULTING ENGINEERS

M 204-cc

2607 1/2 NORTH HIGH STREET

COLUMBUS, OHIO 43202



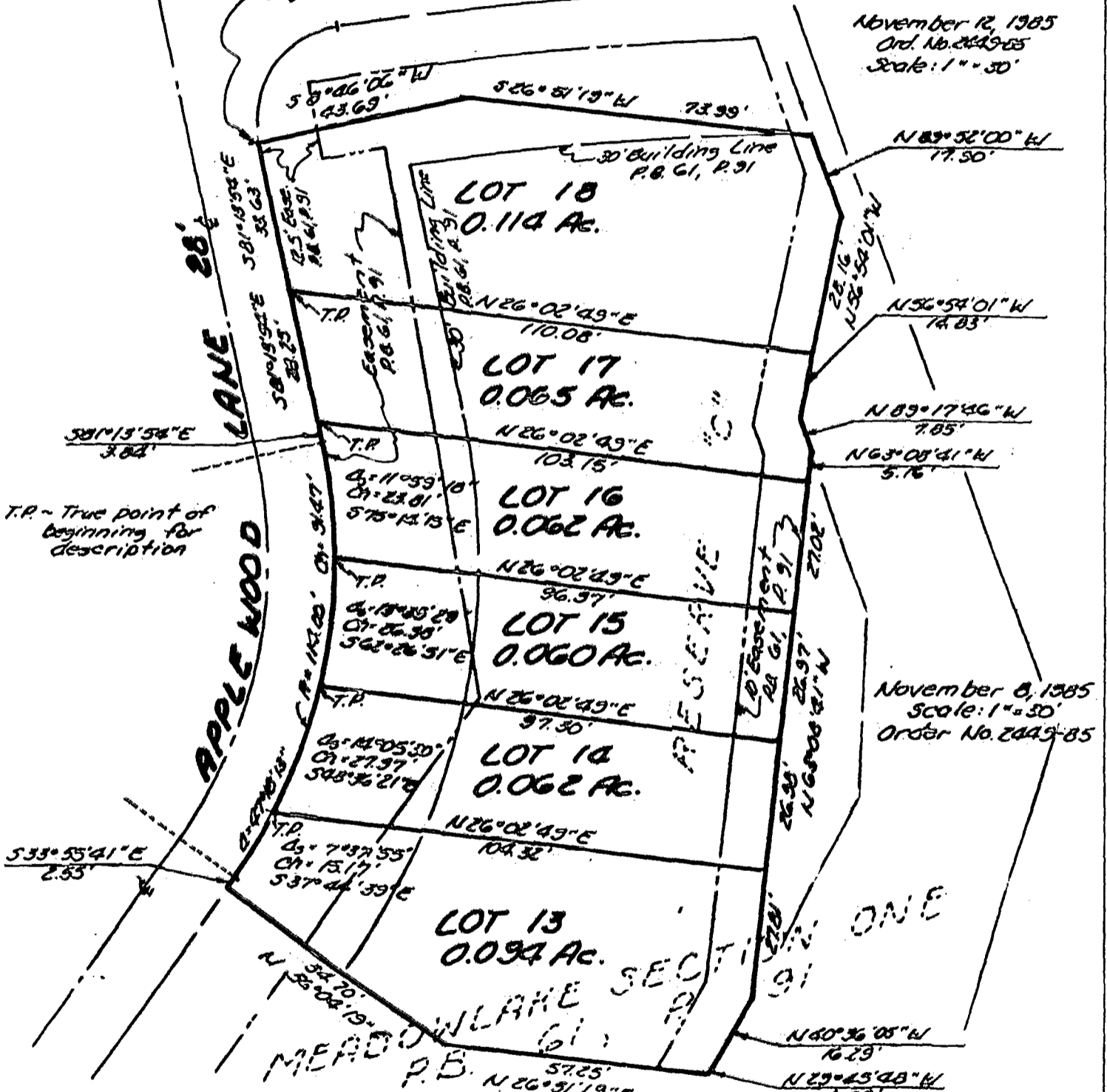
Graphic Scale

**SURVEY MAP OF THE SUBDIVISION OF RESERVE "C" OF MEADOWLAKE SECTION ONE, LOCATED SOUTH OF APPLEWOOD LANE AND WEST OF TRADEWIND DRIVE IN THE CITY OF WESTERVILLE, COUNTY OF FRANKLIN, STATE OF OHIO**

TRADEWIND DRIVE 60'

Reference point of beginning for descriptions of 0.065 acre, 0.062 acre, 0.060 acre and 0.054 acre. Point of beginning for description of 0.114 acre

November 12, 1985  
Ord. No. 2049-85  
Scale: 1" = 30'



T.P. - True point of beginning for description

November 8, 1985  
Scale: 1" = 30'  
Order No. 2049-85

The 0.094 acre, 0.062 acre, 0.060 acre, 0.062 acre, 0.065 acre and 0.114 acre parcels of land shown hereon are situated in the State of Ohio, County of Franklin, City of Westerville, are part of Section 5, Township 2 North, Range 17 West, United States Military Lands and are in RESERVE "C" as the same is designated and delineated upon the recorded plat of Meadowlake Section One, of record in Plot Book 61, Page 91, Recorder's Office, Franklin County, Ohio.

We hereby certify that this map was prepared from information obtained from an as-built location survey of the structure situated on said RESERVE "C" conducted by Bauer, Davidson & Merchant, Inc. on November 1, 1985.

The bearings shown on this map correspond to the bearings on said recorded plat of Meadowlake Section One.

Bauer, Davidson & Merchant, Inc.  
Consulting Engineers

By *James L. Davis*  
Professional Surveyor No. 6342  
November 12, 1985