

# BAUER, DAVIDSON & MERCHANT, INC.

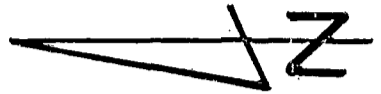
185357650

CONSULTING ENGINEERS

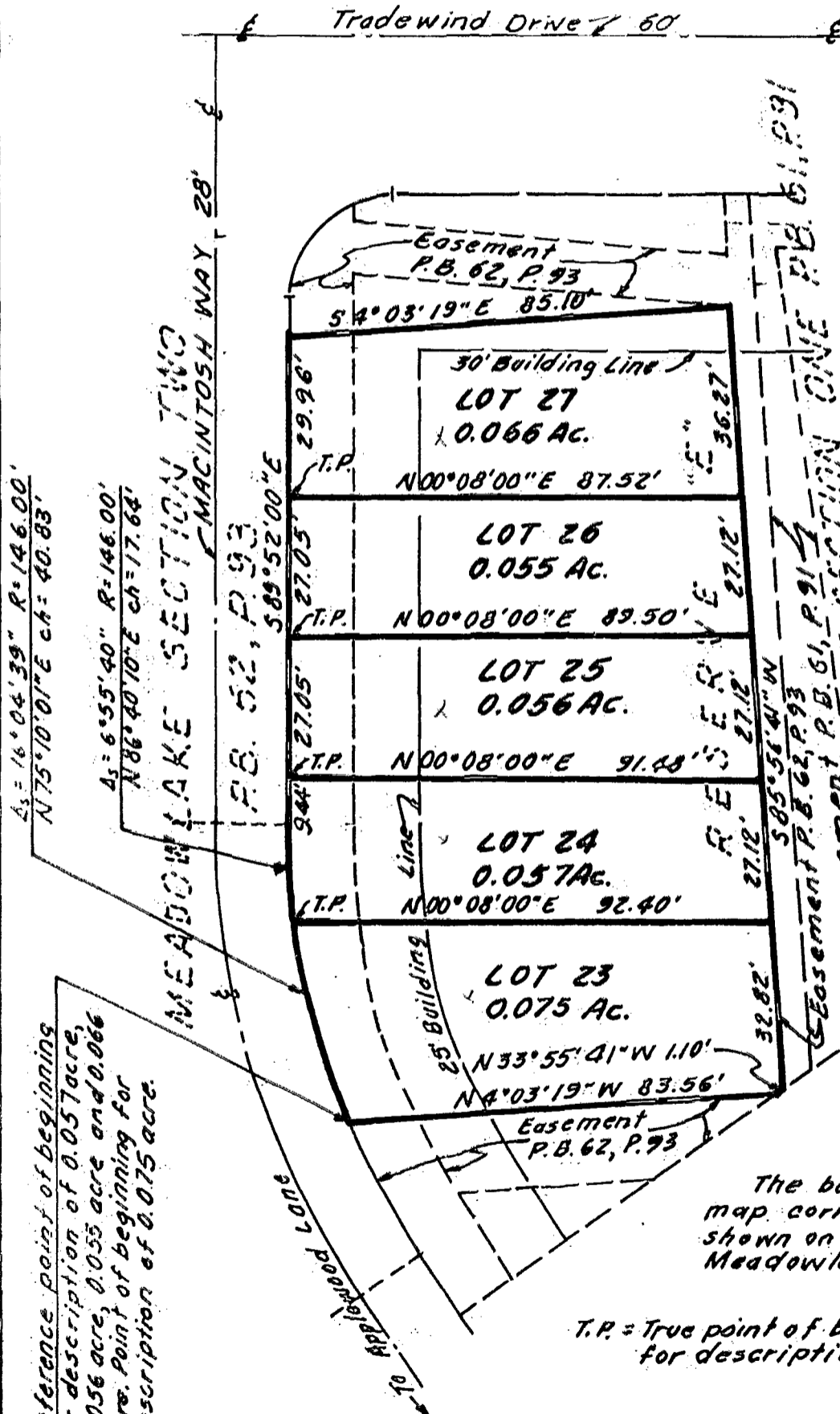
M-204-CC

255 GREEN MEADOWS DRIVE SOUTH SUITE B P.O. BOX 152 POWELL, OHIO 43065

**SURVEY MAP OF THE SUBDIVISION OF RESERVE "E" OF MEADOWLAKE SECTION TWO, LOCATED SOUTH OF HUBER VILLAGE BOULEVARD AND EAST OF APPLEWOOD LANE, IN THE CITY OF WESTERVILLE, COUNTY OF FRANKLIN, STATE OF OHIO**



9249 12-14-86



The 0.075 acre, 0.057 acre, 0.056 acre, 0.055 acre and 0.066 acre parcels of land shown hereon are situated in the State of Ohio, County of Franklin, City of Westerville, are part of Section 2, Township 2 North, Range 17 West, United States Military Lands and are in RESERVE "E" as the same is designated and delineated upon the recorded plat of Meadowlake Section Two, of record in Plat Book 62, Page 93, Recorder's Office, Franklin County, Ohio. We hereby certify that this map was prepared from information obtained from an as-built location survey of the structure situated on said RESERVE "E" conducted by Bauer, Davidson & Merchant, Inc. on October 17, 1986.

Reference point of beginning for description of 0.057 acre, 0.056 acre and 0.066 acre. Point of beginning for description of 0.075 acre.

The bearings shown on this map correspond to the bearings shown on said recorded plat of Meadowlake Section Two.

T.P. = True point of beginning for description.

Scale: 1" = 30'  
Order No. 3302-86  
October 30, 1986

**BAUER, DAVIDSON & MERCHANT, INC.**  
CONSULTING ENGINEERS  
By *John W. McCombs*  
John W. McCombs  
Professional Surveyor No. 6661

