

CITY OF WESTERVILLE

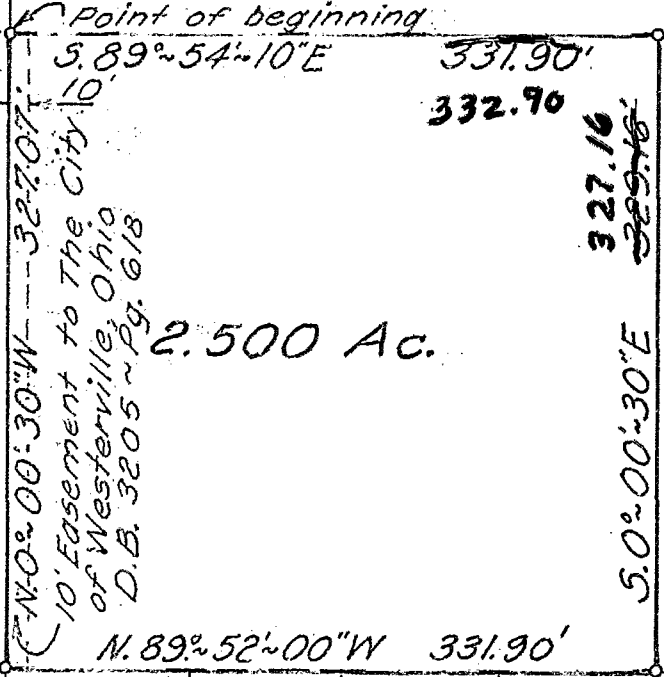
18510.7650

HILLS & DALES No 3  
P.B. 37 Pg. 5

C.H. HUBER ENTERPRISES, INC  
D.B. 2922 ~ Pg. 487

O 1 H

N

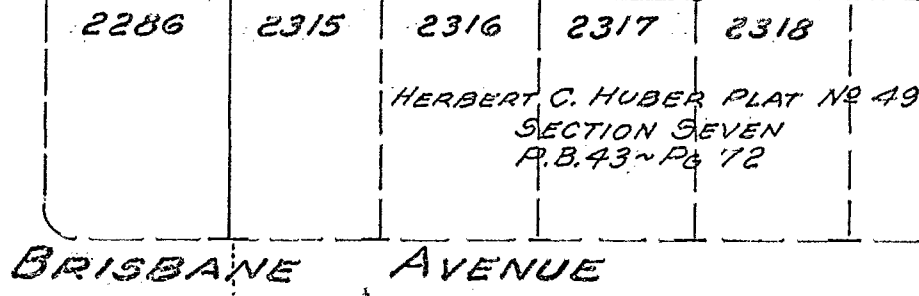


HERBERT C. HUBER PLAT No 49  
SECTION SIX  
P.B. 43 ~ Pg. 33

POINTVIEW DRIVE

2.500 Ac.

C.H. HUBER ENTERPRISES, INC  
D.B. 2674 ~ Pg. 690



BRISBANE AVENUE

**PLAT OF SURVEY**  
**2.500 ACRE ELEMENTARY SCHOOL SITE**  
**IN THE CITY OF WESTERVILLE, OHIO**  
 SCALE: 1" = 100'

PREPARED BY  
 RALPH L. WOOLPERT COMPANY  
 CONSULTING ENGINEERS AND PLANNERS  
 JANUARY 13, 1972

#5663 M&M

3545 120 072 085 E POINTVIEW DR. 1972 0018 030