

# BAUER, DAVIDSON & MERCHANT, INC.

18535 7675  
2607 1/2 NORTH HIGH STREET

CONSULTING ENGINEERS

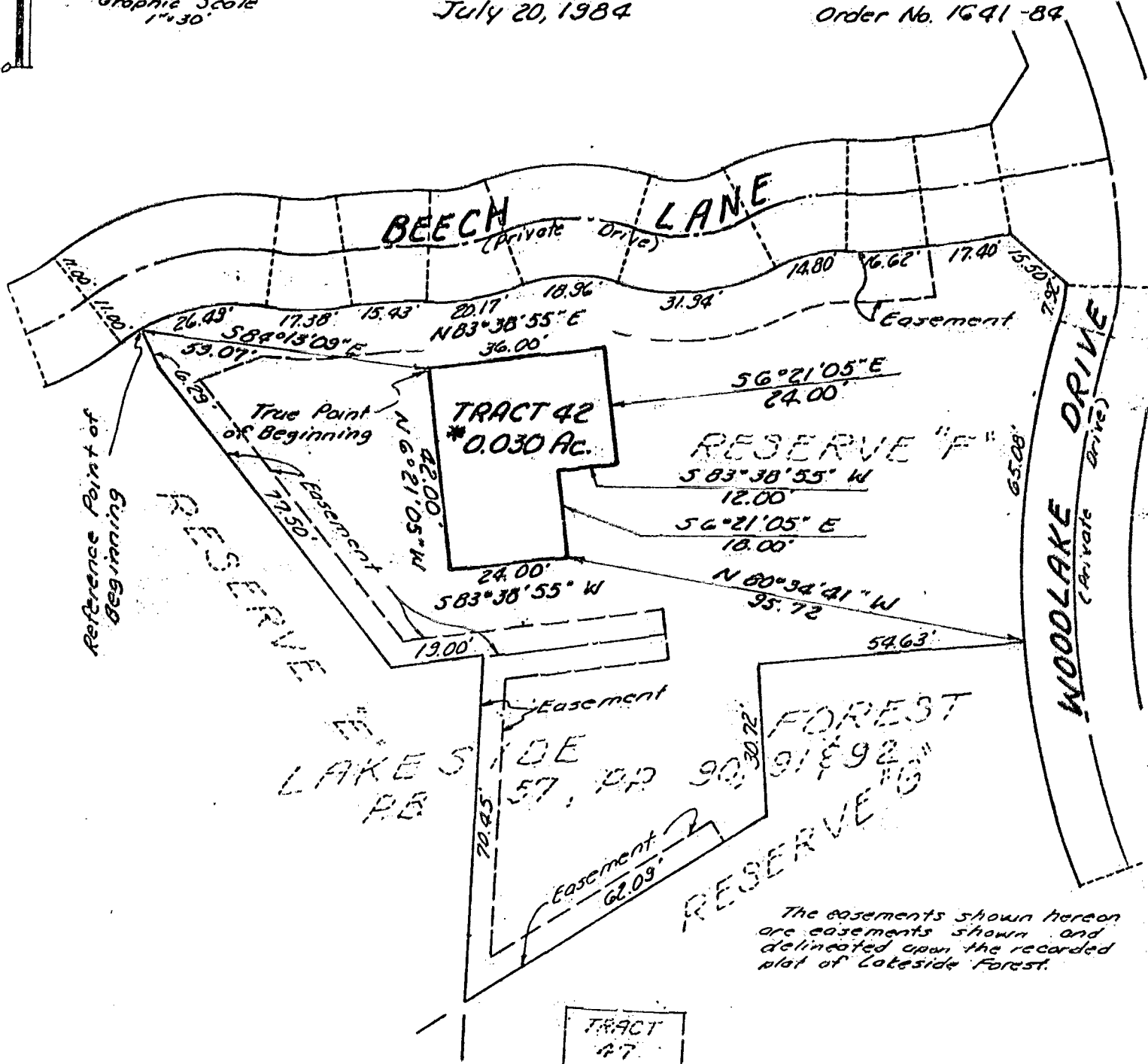
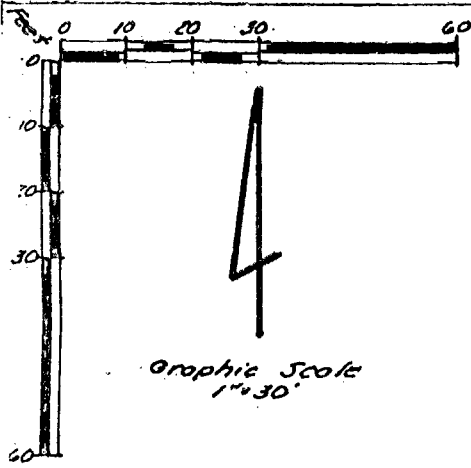
M 201 ~~ST~~ CRES  
COLUMBUS, OHIO 43202

**SURVEY MAP**  
OF 0.030 ACRE OF LAND IN RESERVE  
"F" OF LAKESIDE FOREST LOCATED  
NORTH OF EAST SCHROCK ROAD AND  
WEST OF WOODVIEW ROAD IN THE CITY  
OF WESTERVILLE, FRANKLIN COUNTY, OHIO

(TRACT 42)

July 20, 1984

Order No. 1641-84



The easements shown hereon are easements shown and delineated upon the recorded plat of Lakeside Forest.

\* Situated in the State of Ohio, County of Franklin, City of Westerville, being in Lot Four (4), Section 2, Township 2, Range 17, United States Military Lands, being 0.030 acres of land, more or less, said 0.030 acres being out of RESERVE "F" as the same is designated and delineated upon the recorded plat of Lakeside Forest, of record in Plat Book 57, Pages 90, 91, and 92, Recorder's Office, Franklin County, Ohio.

We hereby certify that the above map was prepared from information obtained from an actual field survey of the premises conducted by Bauer, Davidson & Merchant, Inc. in July of 1984.

Bearings shown on the above map correspond to the bearings shown on the recorded plat of Lakeside Forest, of record in Plat Book 57, pages 90, 91, & 92, Recorder's Office, Franklin County, Ohio.

**BAUER, DAVIDSON & MERCHANT, INC.**  
Consulting Engineers

By John W. McCombs  
John W. McCombs

Registered Professional Surveyor No. 6661