



CONSULTING ENGINEERS & SURVEYORS
GAHANNA, OHIO 43230

Exhibit 'A' - Proposed Split of Lot 1

Westshire Office Park

LOCATED IN:

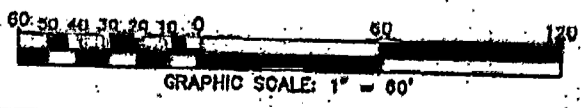
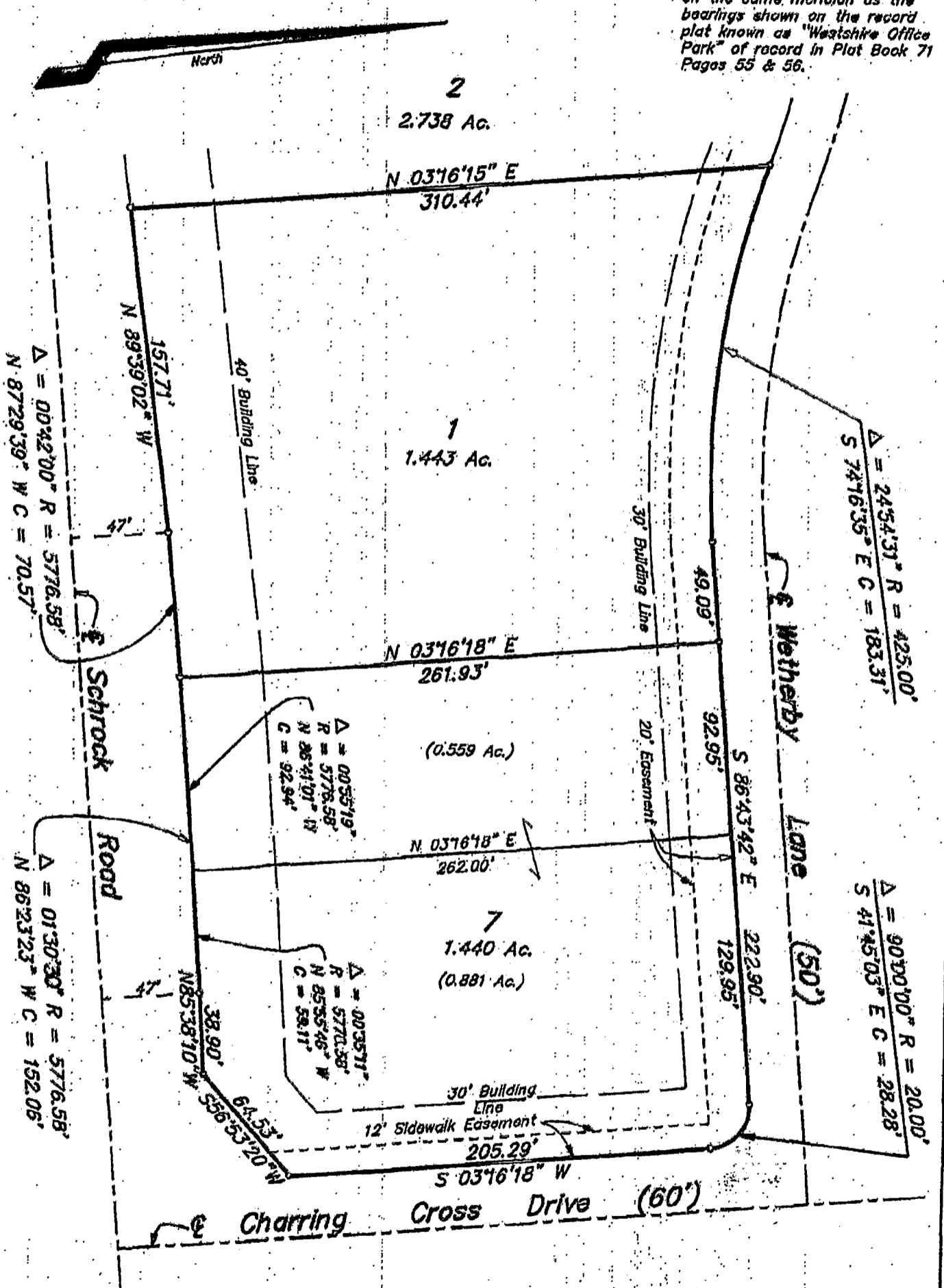
City of Westerville, Franklin County, Ohio

SCALE: 1" = 60'

Nov. 17, 1992

RECORD REFERENCES *P.B. 71, Pa. 55 & 56*

BASIS OF BEARINGS:
The bearings herein are based on the same meridian as the bearings shown on the record plat known as "Westshire Office Park" of record in Plat Book 71 Pages 55 & 56.



E.M.H.&T. INC.

By *Conrad P. O'Neil*
Registered Land Surveyor No. 5425

M-12-DD

184607615