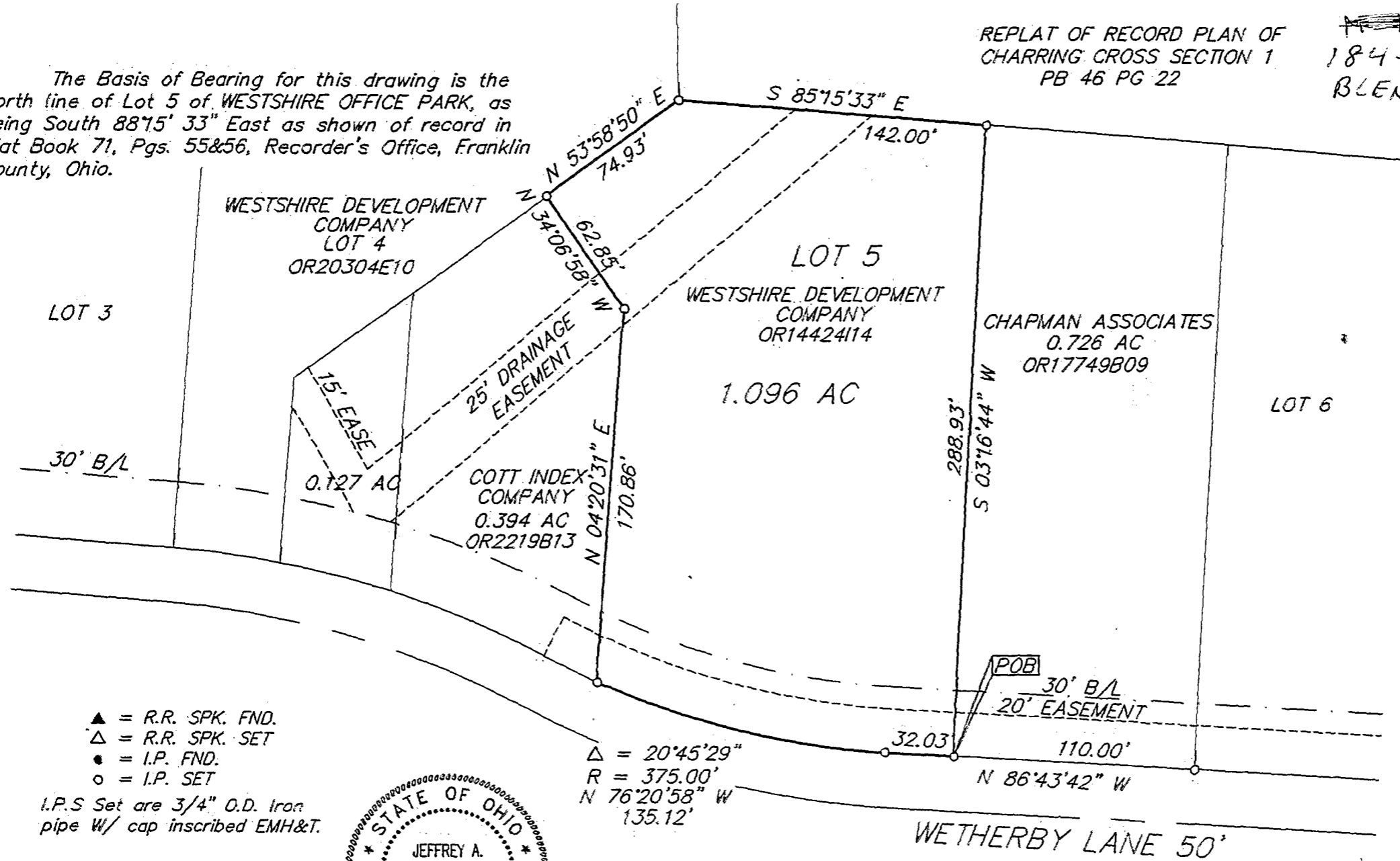


The Basis of Bearing for this drawing is the North line of Lot 5 of WESTSHIRE OFFICE PARK, as being South 88°15' 33" East as shown of record in Plat Book 71, Pgs. 55&56, Recorder's Office, Franklin County, Ohio.

REPLAT OF RECORD PLAN OF CHARRING CROSS SECTION 1 PB 46 PG 22

184-607-675  
BLENDON

SCALE 1" = 60'



LOT 3

WESTSHIRE DEVELOPMENT COMPANY  
LOT 4  
OR20304E10

LOT 5  
WESTSHIRE DEVELOPMENT COMPANY  
OR1442414

CHAPMAN ASSOCIATES  
0.726 AC  
OR17749809

LOT 6

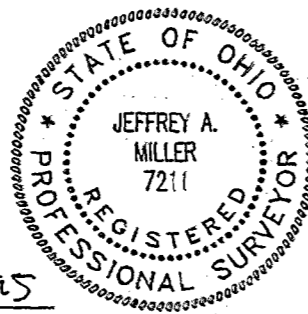
0.127 AC

COTT INDEX COMPANY  
0.394 AC  
OR2219813

1.096 AC

- ▲ = R.R. SPK. FND.
- △ = R.R. SPK. SET
- = I.P. FND.
- = I.P. SET

I.P.S Set are 3/4" O.D. Iron pipe W/ cap inscribed EMH&T.



E. M. H. & T. INC.

By Jeffrey A. Miller 12-15-95  
Professional Surveyor No. 7211

DECEMBER 15, 1995

RECORD REFERENCES

PB 71 PG 55&56

LOT 5 WESTSHIRE OFFICE PARK  
QTR. TWP. 2, TWP. 2, RNG. 17 U.S.M.L.  
CITY OF WESTERVILLE, FRANKLIN COUNTY, OHIO