

184607613

M-12-DD



EXHIBIT "A" - PROPOSED SPLIT OF LOT 5 WESTSHIRE OFFICE PARK

CITY OF WESTERVILLE, FRANKLIN COUNTY, OHIO

SCALE 1" = 60'

June 5, 1992

RECORD REFERENCES

PB 71, Pgs. 55 & 56

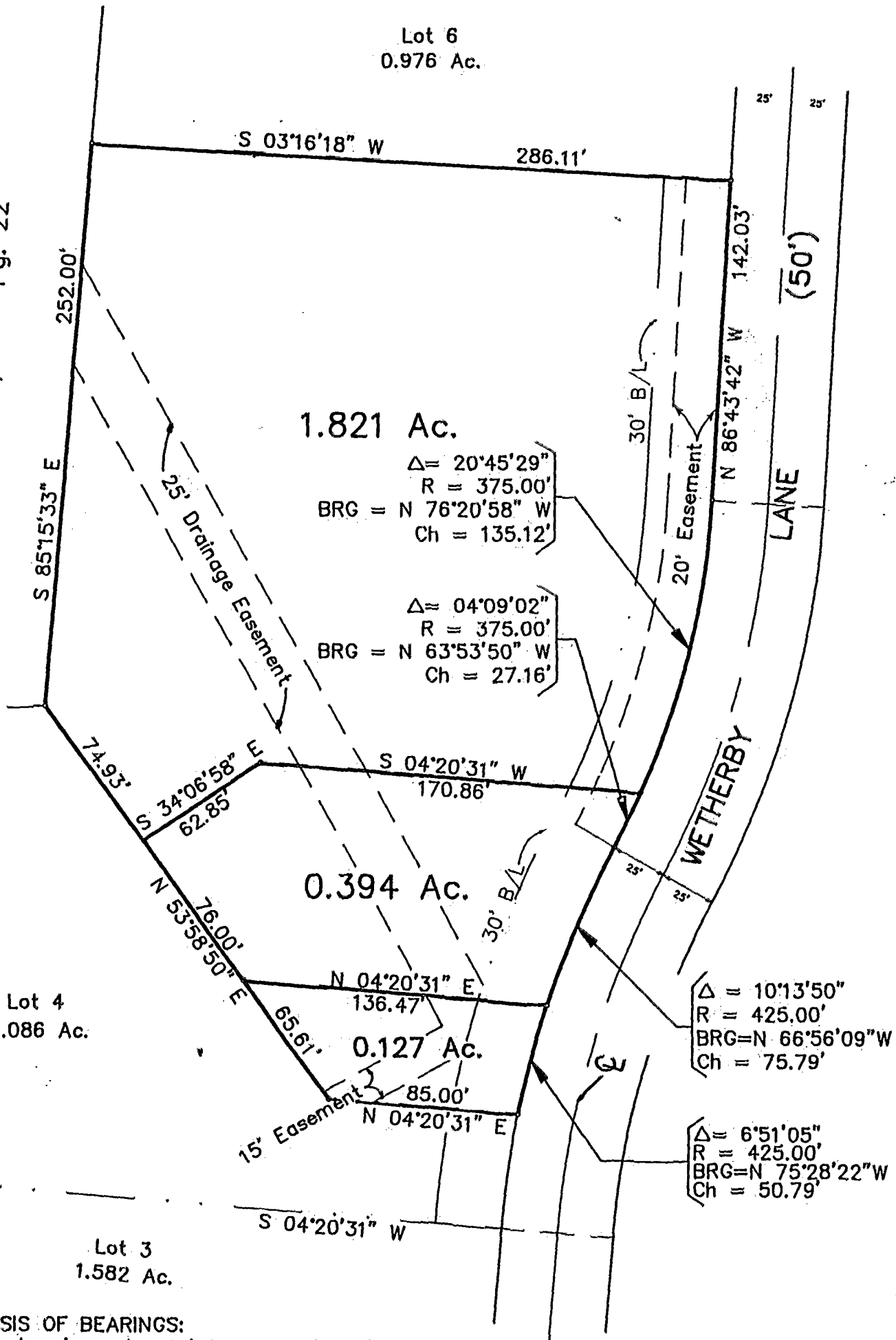
Iron Pin

Revised August 12, 1992



IN FEET

REPLAT OF RECORD PLAN OF
CHARRING CROSS SECTION 1
Lot 1
P. B. 46, Pg. 22



BASIS OF BEARINGS:
The bearings shown hereon are based on the same meridian as the bearings shown on the record plat known as "Westshire Office Park" of record in Plat Book 71, Pages 55 & 56.

E.M.H.&T. INC.

By *Donald P. Robert*
Professional Surveyor No. 5498

M-12-DD