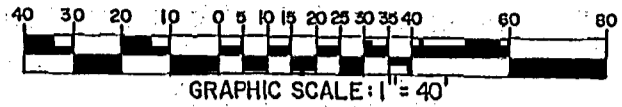


**SURVEY OF PART OF LOT 5
 WESTSHIRE OFFICE PARK
 CITY OF WESTERVILLE, FRANKLIN COUNTY, OHIO**

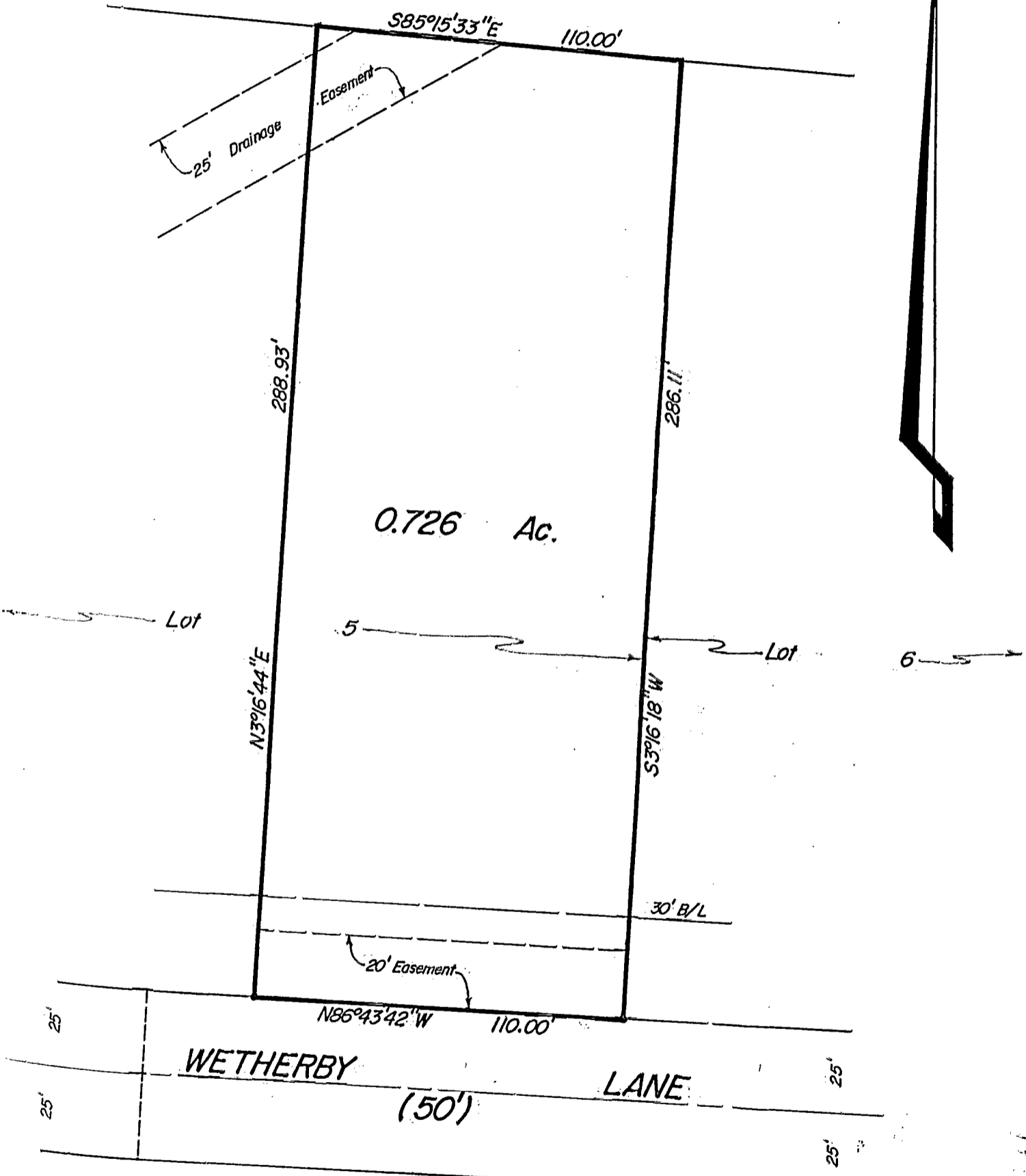
SCALE 1" = 40'

AUGUST 16, 1991

RECORD REFERENCES P. B. 71, Pg. 55



CHARRING CROSS SECTION 1
 Lot 1
 P. B. 46, Pg. 22



THE BEARINGS IN THE ABOVE DESCRIPTION ARE BASED ON THE SAME MERIDIAN AS THE BEARINGS SHOWN ON SAID PLAT OF " WESTSHIRE OFFICE PARK "

E.M.H.&T. INC.

By Donald Albert
 Professional Surveyor No. 5425

184607615

JJ-2-W