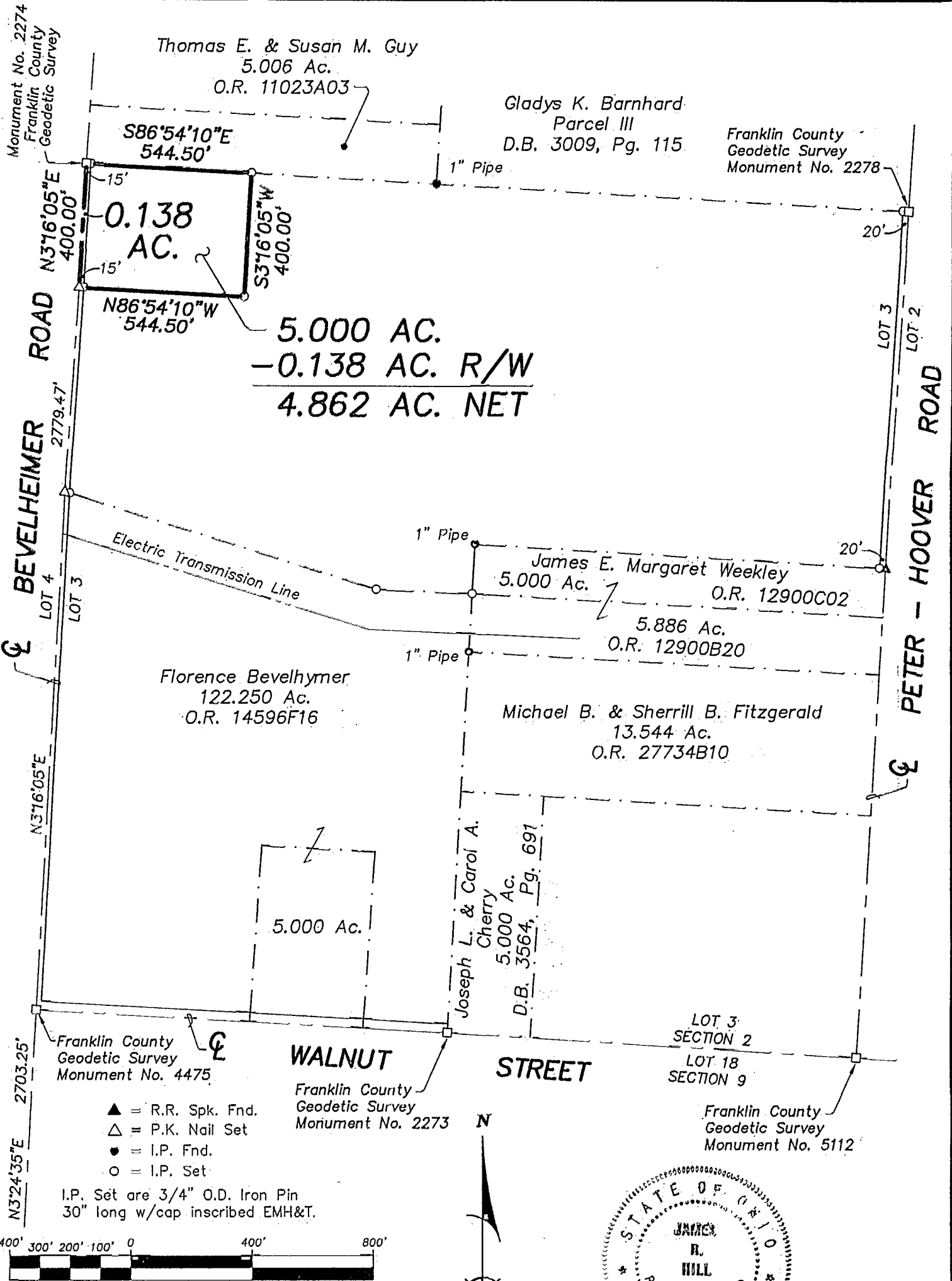




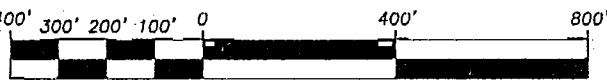
SURVEY OF 5.000 ACRE PARCEL

Located in the
 South Half Lot 3 of the Southeast Quarter of Section 2,
 Quarter Township 1, Township 2, Range 16,
 United States Military Lands
 Village of New Albany, Franklin County, Ohio

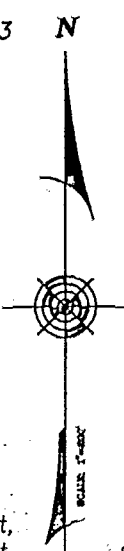


5.000 AC.
 - 0.138 AC. R/W
 4.862 AC. NET

- ▲ = R.R. Spk. Fnd.
 - △ = P.K. Nail Set
 - = I.P. Fnd.
 - = I.P. Set
- I.P. Set are 3/4" O.D. Iron Pin
 30" long w/cap inscribed EMH&T.



GRAPHIC SCALE
 (IN FEET)



By James R. Hill
 Professional Surveyor No. 6919

SCALE : 1" = 400' SEPTEMBER 5, 1997

Q:\PROJECT\19970841\DWG\841-97-3.DWG BC September 5, 1997

88 607 200