

BAUER, DAVIDSON & MERCHANT, INC.

CONSULTING ENGINEERS

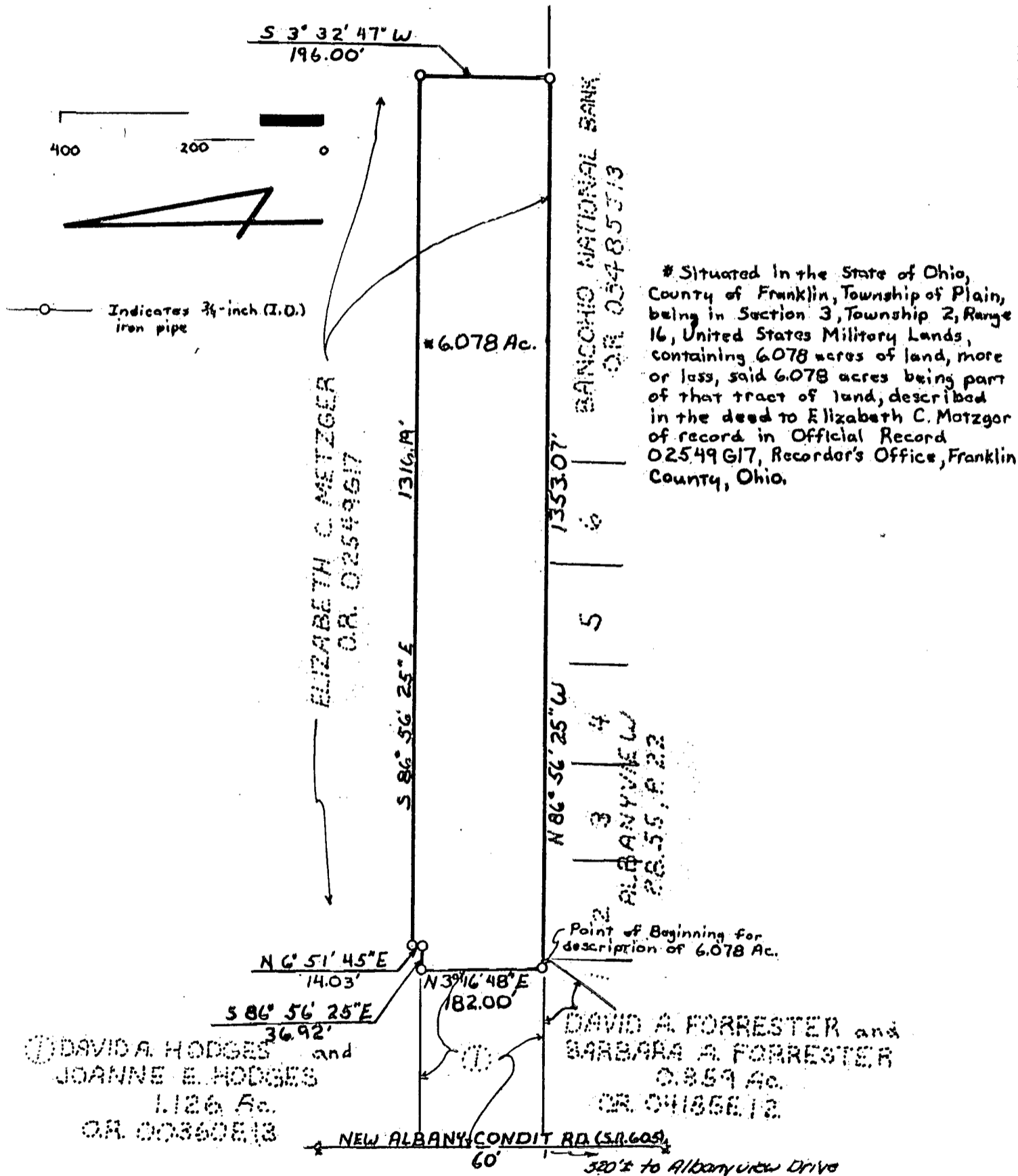
2607 1/2 NORTH HIGH STREET

COLUMBUS, OHIO 43202

BOUNDARY SURVEY MAP
OF 6.078 ACRES OF LAND NORTH OF
ALBANYVIEW DRIVE AND EAST OF NEW ALBANY-CONDIT
ROAD (S.R. 605) IN THE TOWNSHIP OF PLAIN,
COUNTY OF FRANKLIN, STATE OF OHIO
 AUGUST 16, 1985

O 7 A A

SCALE: 1"=200'



* Situated in the State of Ohio, County of Franklin, Township of Plain, being in Section 3, Township 2, Range 16, United States Military Lands, containing 6.078 acres of land, more or less, said 6.078 acres being part of that tract of land, described in the deed to Elizabeth C. Metzger of record in Official Record 02549617, Recorder's Office, Franklin County, Ohio.

We hereby certify that the above map was prepared from information obtained from an actual field survey conducted by Bauer, Davidson & Merchant, Inc. in August and October of 1985. All of the survey markers shown on the above map were in place on October 4, 1985.

18810 7725
 18810 7700

BAUER, DAVIDSON & MERCHANT, INC.
 CONSULTING ENGINEERS

By Gatis Krenpreiss
 Gatis Krenpreiss
 Professional Surveyor No. 5572