

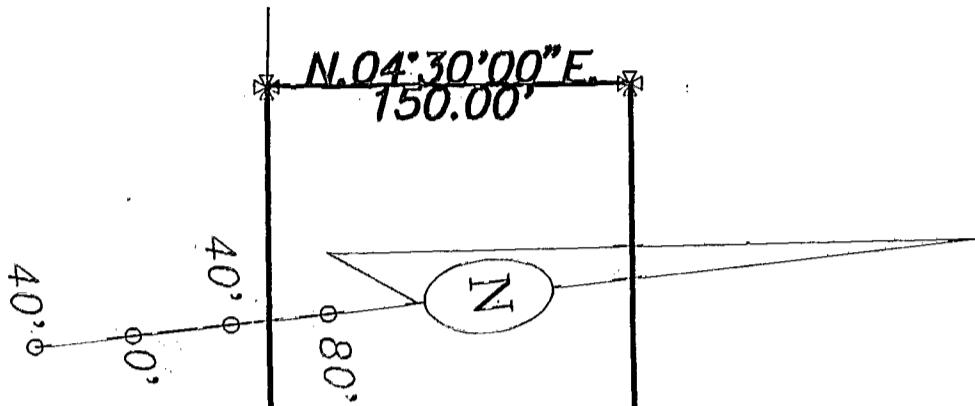
JERRY A. MALOTT SURVEYING Co.

East Main Street ~ Suite 101, Columbus, Ohio 43068 (614) 577-0957

FOR: JERRY L. GRAVES

187107723
187107700

BOUNDARY SURVEY



JESEPHINE E. AND MICHAEL POOL
OFFICIAL RECORD 14532 D09

1.845 ACRES

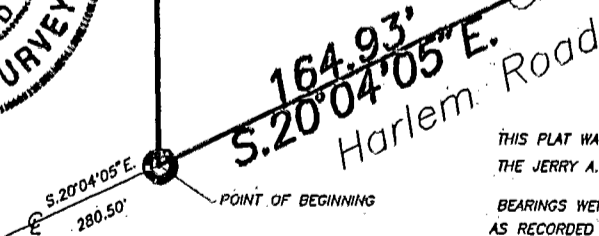
AMERICAN ENERGY SERVICES
DEED VOL. 3724, PG. 816

LEGEND

- ⊗ 3/4 inch IP set
- Spike set
- Spike found



FRANKLIN COUNTY MONUMENT
NO. 5570



FRANKLIN COUNTY MONUMENT
NO. 5569

THIS PLAT WAS BASED ON AN ACTUAL FIELD SURVEY BY
THE JERRY A. MALOTT SURVEYING CO. IN JULY, 1992

BEARINGS WERE BASED ON THE SOUTHERLY LINE OF THE ORIGINAL 14.443 ACRE TRACT
AS RECORDED IN OFFICIAL RECORD 14532 D09

BY Jerry A. Malott
Professional Surveyor
JERRY A. MALOTT

SCALE 1" = 80' DATE 8-6-92

LOCATION State of Ohio, County of Franklin, and being 1.845
acres as described in O.R. 14532 D09; Franklin County Records.

0-73-4