

SMITH 111C8D L:\9063100\PLATS\SHEETS\MONTGOM.DWG 02/17/97 07:31 PSLTS: 0 LTS: 30

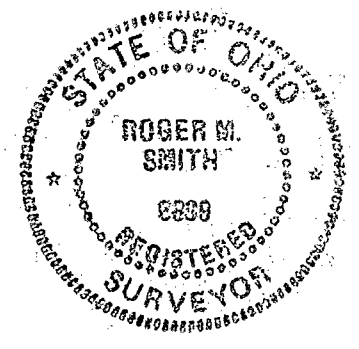
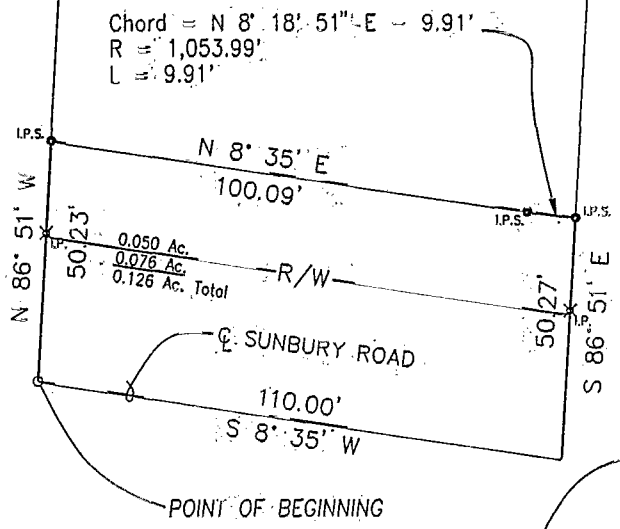
Jean E. Orders
Deed Book 2511 Page 610
0.685 Ac.



SCALE: 1" = 40'
BASIS OF BEARING
C/L SUNBURY ROAD AT SE CORNER
S 8° 35' W

Robert F. & Maida E. Harmon
O.R. 06965 H08
1.743 Ac.

John R. Montgomery
O.R. 05266 J04
0.754 Ac.



Roger M. Smith
ROGER M. SMITH
OHIO REGISTERED SURVEYOR
S-6899

- △^{R.R.S.F.} RAILROAD SPIKE FOUND
- °_{IP.F.} IRON PIN FOUND
- ×_{IP.} IRON PIN CALL
- IP.S. IRON PIN PROPOSED

PROJECT	SUNBURY ROAD	JOB NO.	9063100
SUBJECT	PROPERTY PLAT	DATE	17 FEB 97
BY	RMS	CHECKED	RMS
		SHEET NO.	1 OF 1

URS
URS CONSULTANTS
ARCHITECTS • ENGINEERS • PLANNERS

BLENDON
85 857 700