

City of Columbus
D. B. 1716, PG. 58
31.096 Ac.



SCALE: 1" = 150'

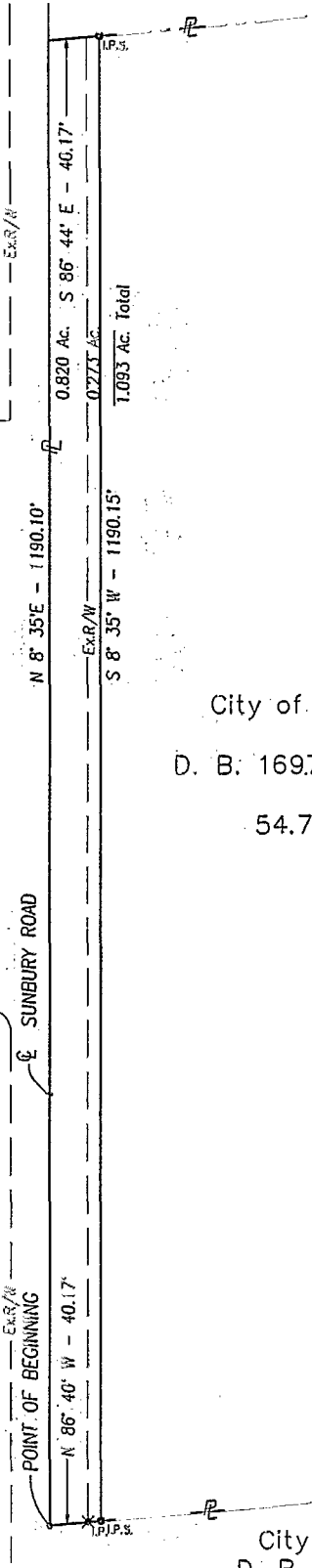
BASIS FOR BEARING - C/L SUNBURY ROAD N 8° 35' E



ROGER M. SMITH
OHIO REGISTERED SURVEYOR
S-6899

- Δ_{RRSF} RAILROAD SPIKE FOUND
- $\nabla_{I.P.F.}$ IRON PIN FOUND
- $\times_{I.P.}$ IRON PIN CALL
- $\bullet_{I.P.S.}$ IRON PIN PROPOSED

GOLDSMITH DRIVE



City of Columbus
D. B. 1697 PG. 258
54.718 Ac.

City of Columbus
D. B. 1718, PG. 466
25.718 Ac.

SMITH 111C8D L:\9063100\PLATS\SHEETS\C066.DWG 02/16/97 11:16 LTS: 30 PSLTS: 0

PROJECT	SUNBURY ROAD	JOB NO.	9063100
SUBJECT	PROPERTY PLAT	DATE	16 FEB 97
BY	RMS	CHECKED	RMS
SHEET NO. 1 OF 1			



URS CONSULTANTS
ARCHITECTS • ENGINEERS • PLANNERS

BLENDON
85857 700