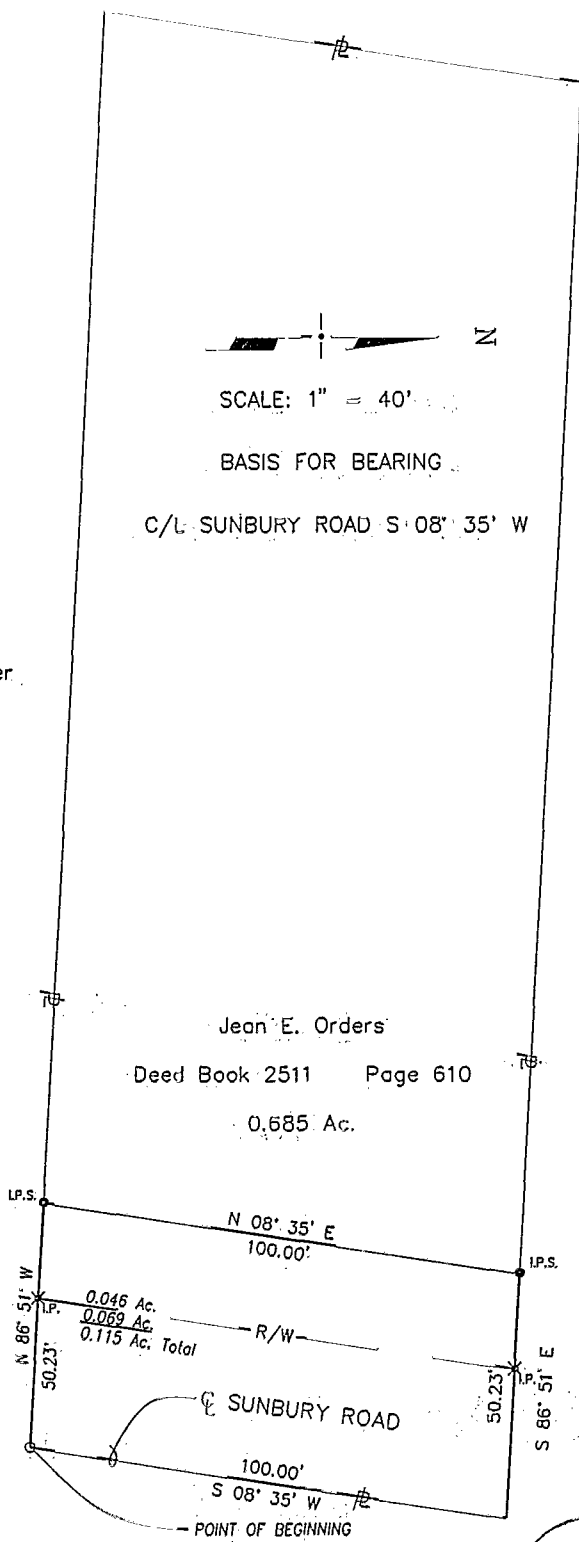


SMITH 111C8D L:\9063100\PLATS\SHEETS\ORDERS.DWG 02/17/97 07:21 LTS: 30 PSLTS: 0



SCALE: 1" = 40'

BASIS FOR BEARING

C/L SUNBURY ROAD S 08° 35' W

John C. & Mary E. Altmiller

O.R. 14880 B19

1.028 Ac.

John R. Montgomery

O.R. 5266 J04

0.754 Ac.

Jean E. Orders

Deed Book 2511 Page 610

0.685 Ac.



*Roger M. Smith*  
 ROGER M. SMITH  
 OHIO REGISTERED SURVEYOR  
 S-6899

△<sup>RRSF</sup> RAILROAD SPIKE FOUND

°<sub>I.P.F.</sub> IRON PIN FOUND

×<sub>I.P.</sub> IRON PIN CALL

LP.S. IRON PIN PROPOSED

PROJECT SUNBURY ROAD

JOB NO. 9063100

SUBJECT PROPERTY PLAT

DATE 17-FEB 97

BY RMS

CHECKED RMS

SHEET NO. 1 OF 1



URS CONSULTANTS  
ARCHITECTS • ENGINEERS • PLANNERS

BLENDAN  
85 857 700