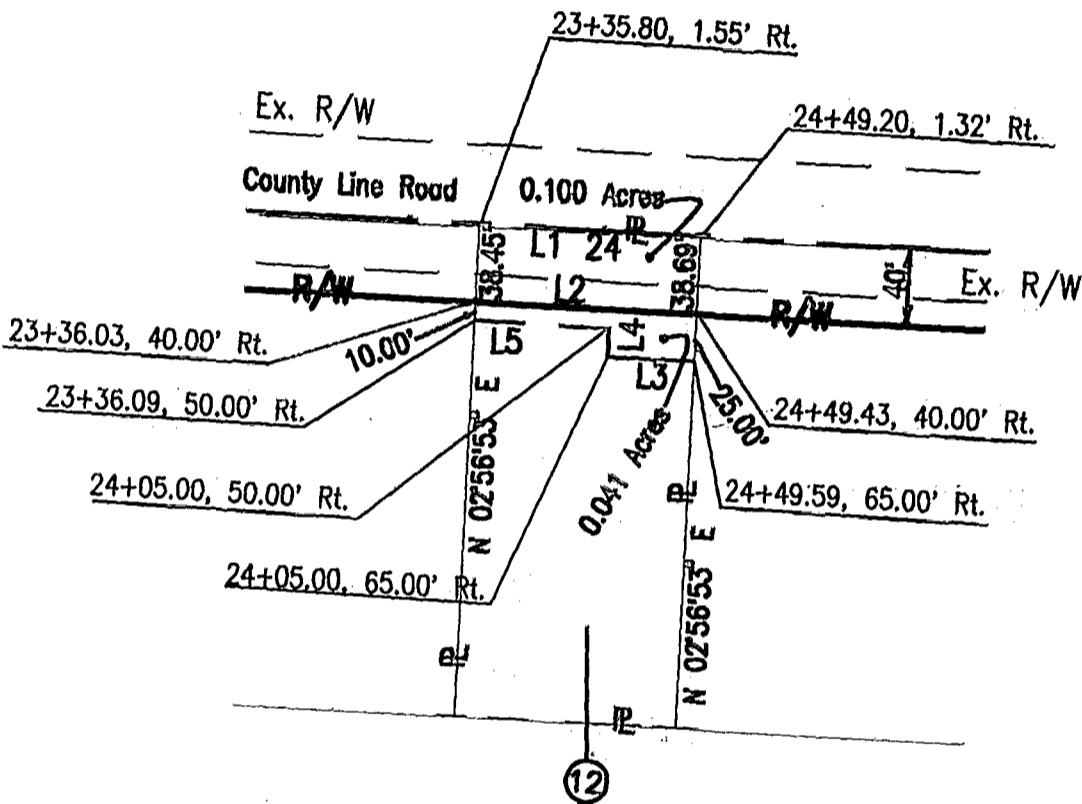


PARCEL 12



BASIS OF BEARING:  
 THE BEARINGS WERE TRANSFERRED BY A FIELD  
 TRAVERSE ORIGINATING ON FRANKLIN COUNTY  
 SURVEY CONTROL MOUNUMENT "FRANK85" AND  
 ARE BASED ON THE OHIO STATE PLANE  
 COORDINATE SYSTEM, SOUTH ZONE. THE BEARING  
 FOR THE CENTERLINE OF COUNTY LINE ROAD  
 FROM MONUMENT FCGS 3318 TO A RAILROAD SPIKE  
 FOUND AT AN ANGLE POINT AT STATION 34+65.42  
 IS N86°31'35"W.



Donald L. Hemmelgarn and Gayle A. Heitkamp  
 D.B. 3703, Page 561

Situated in the State of Ohio, County of  
 Franklin, City of Westerville, being in  
 Section 2, Town 2 North, Range 17 West,  
 United States Military Lands.

| LINE | BEARING       | DISTANCE |
|------|---------------|----------|
| L1   | S 86°49'07" E | 113.40'  |
| L2   | N 86°42'03" W | 113.40'  |
| L3   | N 86°42'03" W | 44.59'   |
| L4   | N 03°17'57" E | 15.00'   |
| L5   | N 86°42'03" W | 68.91'   |



Scale: 1" = 100' Date: November 1995

Prepared by:  
 STICKLEN-BELSHEIM & ASSOCIATES  
 1050 KINGSMILL PARKWAY  
 COLUMBUS, OHIO 43229  
 PHONE: (614) 885-5353

080-2506

*Alden M. McGee*  
 Alden M. McGee, Professional Surveyor No. 5679

1-19-96  
 Date

BLENDED 185 107 750