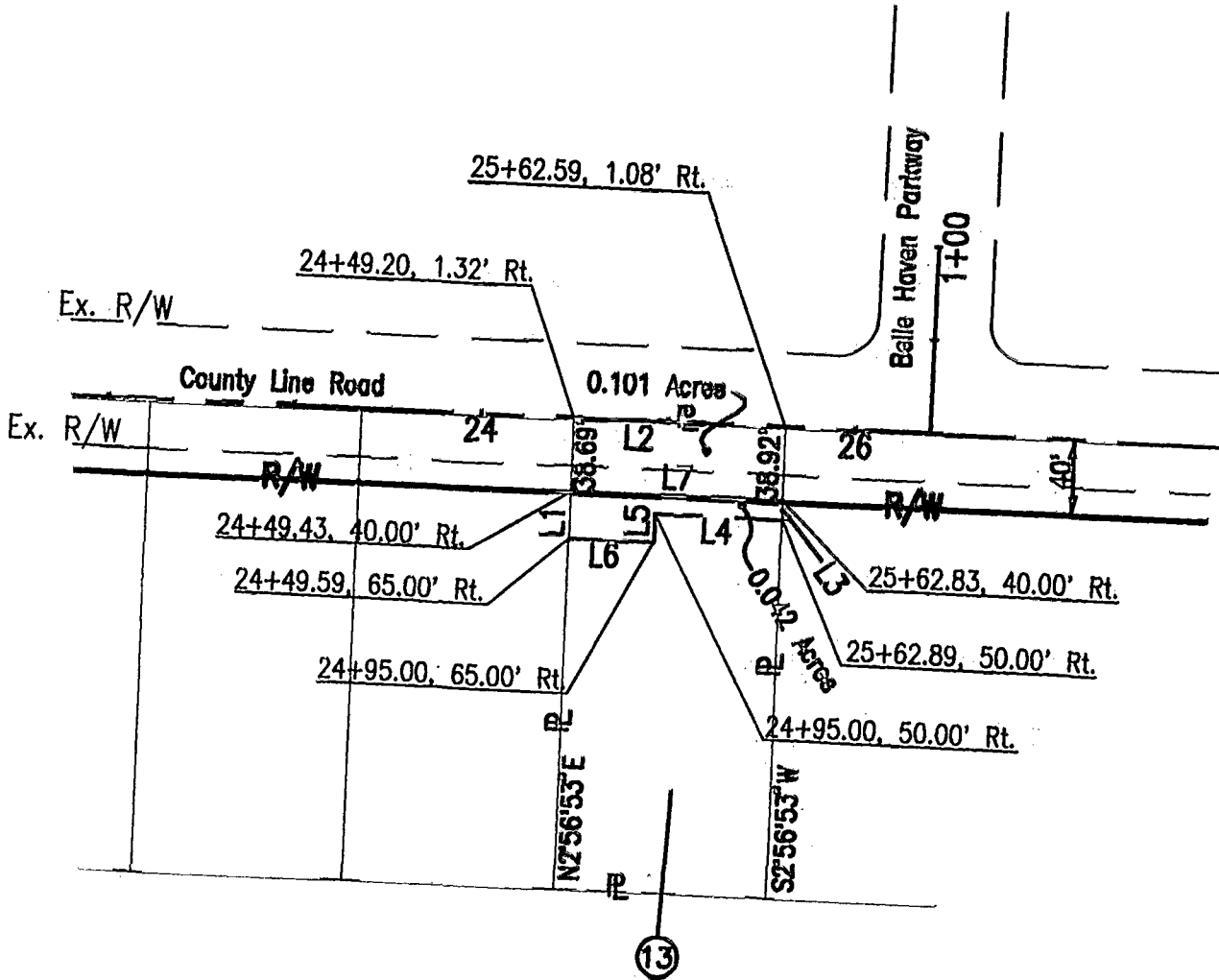


PARCEL 13



BASIS OF BEARING:
 THE BEARINGS WERE TRANSFERRED BY A FIELD
 TRAVERSE ORIGINATING ON FRANKLIN COUNTY
 SURVEY CONTROL MOUNUMENT "FRANK85" AND
 ARE BASED ON THE OHIO STATE PLANE
 COORDINATE SYSTEM, SOUTH ZONE. THE BEARING
 FOR THE CENTERLINE OF COUNTY LINE ROAD
 FROM MONUMENT FCGS 3318 TO A RAILROAD SPIKE
 FOUND AT AN ANGLE POINT AT STATION 34+65.42
 IS N86°31'35"W.



Anna Mae Stone
 O.R. 3539, Page A01

Situated in the State of Ohio, County of
 Franklin, City of Westerville, being in
 Section 2, Town 2 North, Range 17 West,
 United States Military Lands



Scale: 1" = 100'

Date: November 1995

LINE	BEARING	DISTANCE
L1	N 02°56'53" E	25.00'
L2	S 86°49'07" E	113.40'
L3	S 02°56'53" W	10.00'
L4	N 86°42'03" W	67.89'
L5	S 03°17'57" W	15.00'
L6	N 86°42'03" W	45.41'
L7	N 86°42'03" W	113.40'

Prepared by:
 STICKLEN-BELSHEIM & ASSOCIATES
 1050 KINGSMILL PARKWAY
 COLUMBUS, OHIO 43229
 PHONE: (614) 885-5353

Alden M. McGee
 Alden M. McGee, Professional Surveyor No. 5679

1-19-96
 Date

080-2505

BLEDDEN 185 107 750