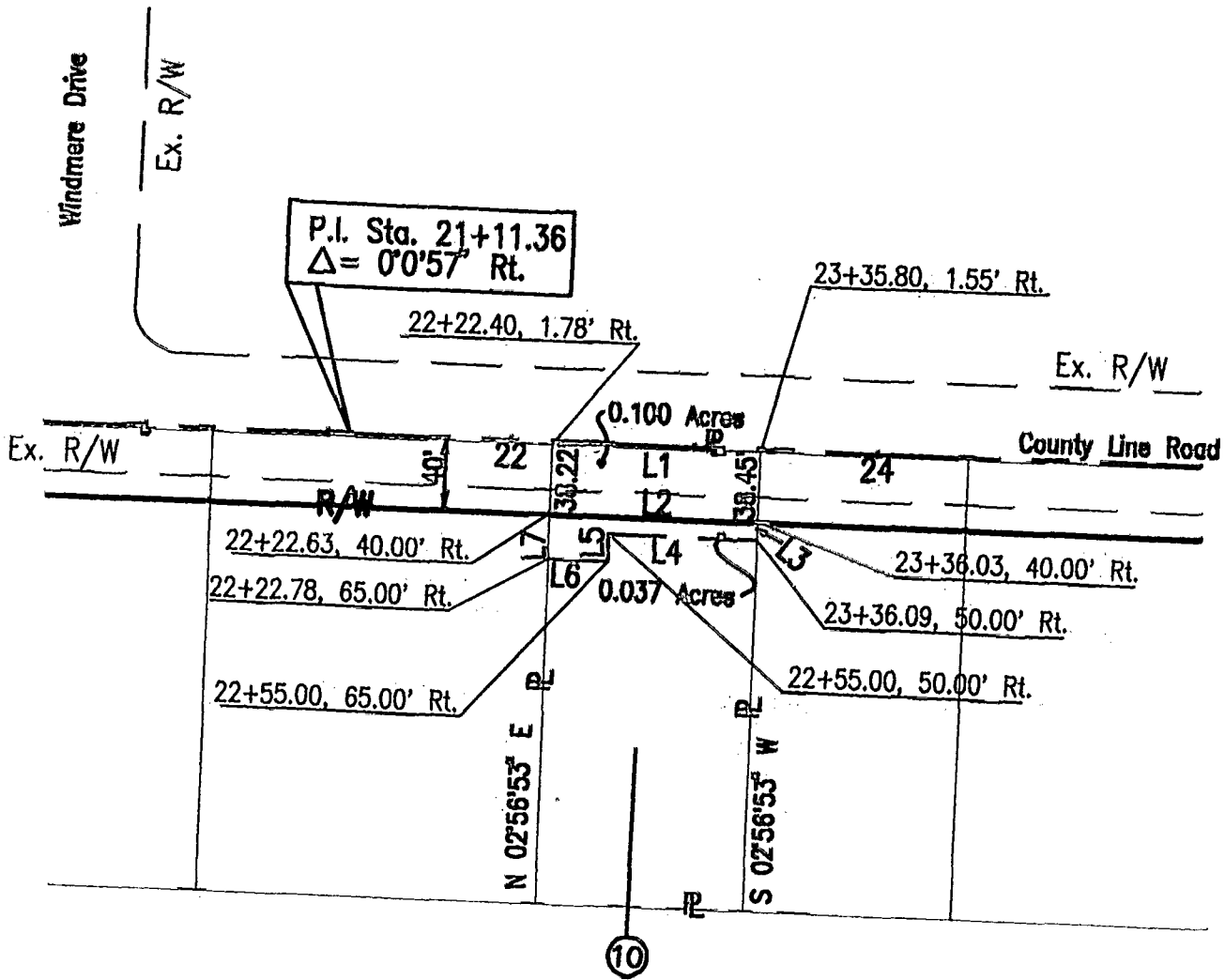


PARCEL 10



BASIS OF BEARING:
 THE BEARINGS WERE TRANSFERRED BY A FIELD
 TRAVERSE ORIGINATING ON FRANKLIN COUNTY
 SURVEY CONTROL MOUNUMENT "FRANK85" AND
 ARE BASED ON THE OHIO STATE PLANE
 COORDINATE SYSTEM, SOUTH ZONE. THE BEARING
 FOR THE CENTERLINE OF COUNTY LINE ROAD
 FROM MONUMENT FCGS. 3318 TO A RAILROAD SPIKE
 FOUND AT AN ANGLE POINT AT STATION 34+65.42
 IS N86°31'35"W.



John A. Mowder and Donna Jean Mowder
 D.B. 2151, Page 20

Situated in the State of Ohio, County of
 Franklin, City of Westerville, being in
 Section 2, Town 2 North, Range 17 West,
 United States Military Lands

LINE	BEARING	DISTANCE
L1	S 86°49'07" E	113.40'
L2	N 86°42'03" W	113.40'
L3	S 02°56'53" W	10.00'
L4	N 86°42'03" W	81.09'
L5	S 03°17'57" W	15.00'
L6	N 86°42'03" W	32.22'
L7	N 02°56'53" E	25.00'

0' 100' 200' 300'
 Scale: 1" = 100' Date: November 1995

Prepared by:
 STICKLEN-BELSHEIM & ASSOCIATES
 1050 KINGSMILL PARKWAY
 COLUMBUS, OHIO 43229
 PHONE: (614) 885-5353

Alden M. McGee
 Alden M. McGee, Professional Surveyor No. 5679

1-19-96
 Date

080 2621

BLENDERS 185 107 750