

# BAUER, DAVIDSON & MERCHANT, INC.

184857750

CONSULTING ENGINEERS

256 GREEN MEADOWS DRIVE SOUTH P.O. BOX 152 POWELL, OHIO 43065

## BOUNDARY SURVEY MAP OF 0.778 ACRE OF LAND LOCATED NORTH OF COLLEGE AVENUE AND WEST OF OTTERBEIN AVENUE, IN THE CITY OF WESTERVILLE, COUNTY OF FRANKLIN, STATE OF OHIO

WESTERVILLE COMMONS CONDOMINIUM P.B. 7, P. 16

N 89° 37' 05" E 158.80'

\* 0.778 AC.

JACK G. LANE  
S.B. 3751, P. 283

N 0° 16' 59" W 205.43'

HEARTHSTONE MANAGEMENT CO.

10894 A.D.E.

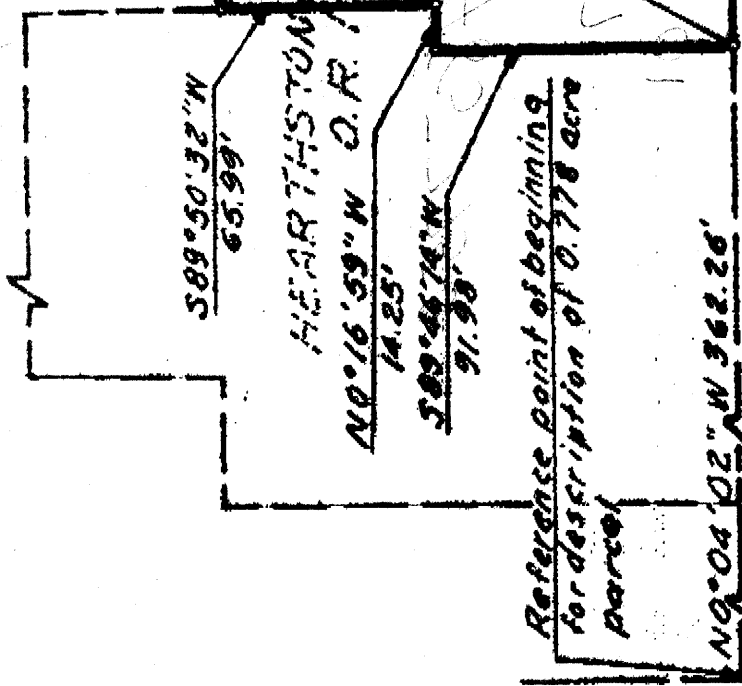
1.774 AC.

This point of beginning

30° 00' 02" E 220.19'

OTTERBEIN AVENUE 50'

\* Situated in the State of Ohio, County of Franklin, City of Westerville, being in Section 2, Township 2 North, Range 17 West, United States Military Lands, containing 0.778 acre of land, more or less, said 0.778 acre of land being a part of that 1.774 acre tract of land conveyed to Hearthstone Management Company, by deed of record in Official Record 10894 A02, Recorder's Office, Franklin County, Ohio



COLLEGE AVENUE 40'

We hereby state that the foregoing map was prepared from information obtained from an actual field survey conducted by Bauer, Davidson & Merchant, Inc. in October of 1989.

The bearing shown on the foregoing map are based on an assumed meridian.

Order No. 3394-89  
Scale: 1" = 60'  
October 27, 1989



BAUER, DAVIDSON & MERCHANT, INC.  
CONSULTING ENGINEERS

John W. McCombs  
Professional Surveyor No. 6661