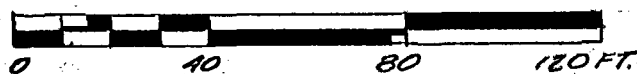


BAUER, DAVIDSON & MERCHANT, INC.

CONSULTING ENGINEERS

255 GREEN MEADOWS DRIVE SOUTH P.O. BOX 370 POWELL OHIO 43065



BOUNDARY SURVEY MAP OF 0.169 ACRE OF LAND LOCATED SOUTH OF COUNTY LINE ROAD (SMOTHERS ROAD) AND WEST OF OTTERBEIN AVENUE, IN THE CITY OF WESTERVILLE, COUNTY OF FRANKLIN, STATE OF OHIO

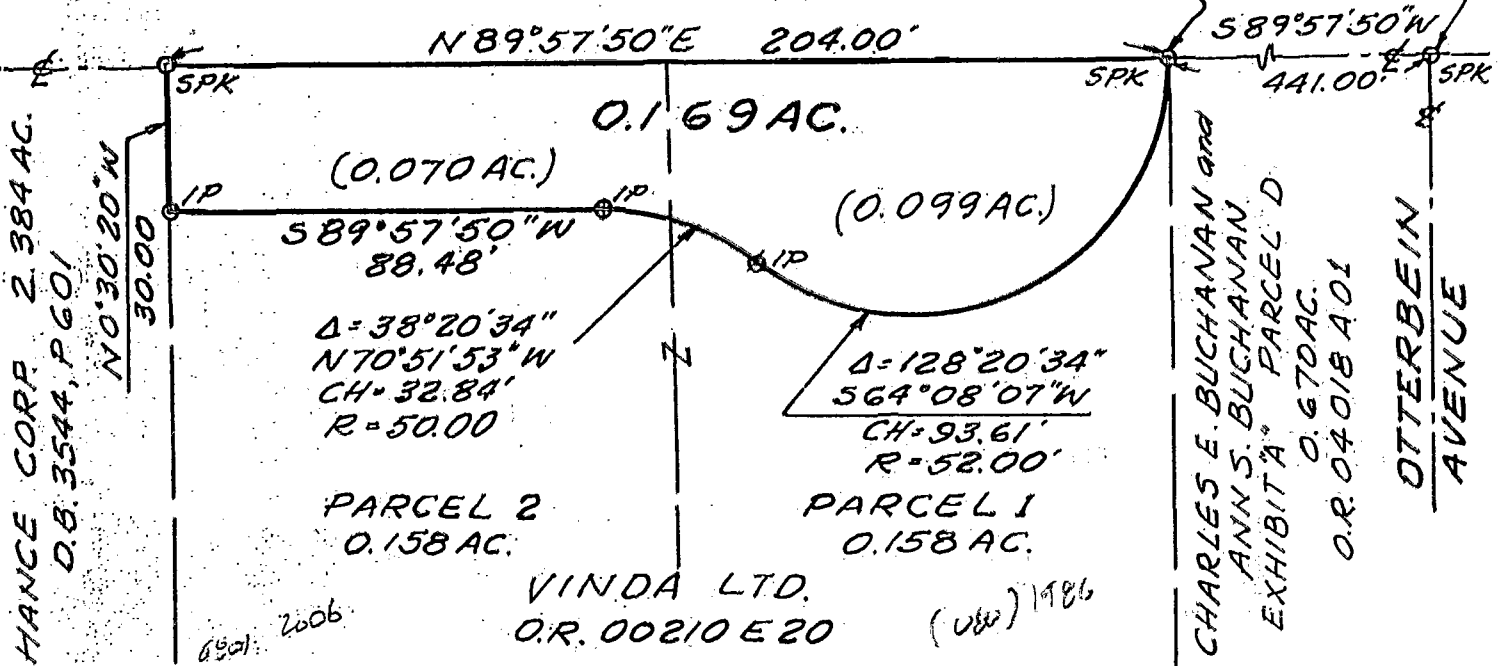
LEGEND:

- SPK = Railroad spike
- IP = 3/4-inch (6.0) iron pipe

Reference point of beginning for description of 0.169 Ac.

True point of beginning for description of 0.169 Ac.

COUNTY LINE ROAD (SMOTHERS ROAD)



Situated in the State of Ohio, County of Franklin, City of Westerville, being in Section 2, Township 2, Range 17, United States Military Lands, containing 0.169 acre of land, more or less, 0.099 acre of said 0.169 acre being out of that 1.158 acre tract of land designated as PARCEL 1 and described in the deed to Vinda LTD., of record in Official Record 00210E20, and 0.070 acre of said 0.169 acre being out of that 1.158 acre tract of land designated as PARCEL 2 and described in the deed to Vinda LTD., of record in Official Record 00210E20, both being of record in the Recorder's Office, Franklin County, Ohio.

We hereby state that the above map was prepared from information obtained from an actual field survey conducted by Bauer, Davidson & Merchant, Inc. in April of 1991.

The bearings shown on the above map are based upon the bearings given for the centerline of County Line Road as shown upon the recorded plat of Windemere, a subdivision plat of record in Plat Book 24, Pages 45 and 46, Recorder's Office, Delaware County, Ohio.

BAUER, DAVIDSON & MERCHANT, INC.
Consulting Engineers

By *Gatis Erenpreiss*
Gatis Erenpreiss
Professional Surveyor No. 5572



Scale: 1" = 40' Apr. 25, 1991
1417-91