

# BAUER, DAVIDSON & MERCHANT, INC.

CONSULTING ENGINEERS

2607½ NORTH HIGH STREET

COLUMBUS, OHIO 43202

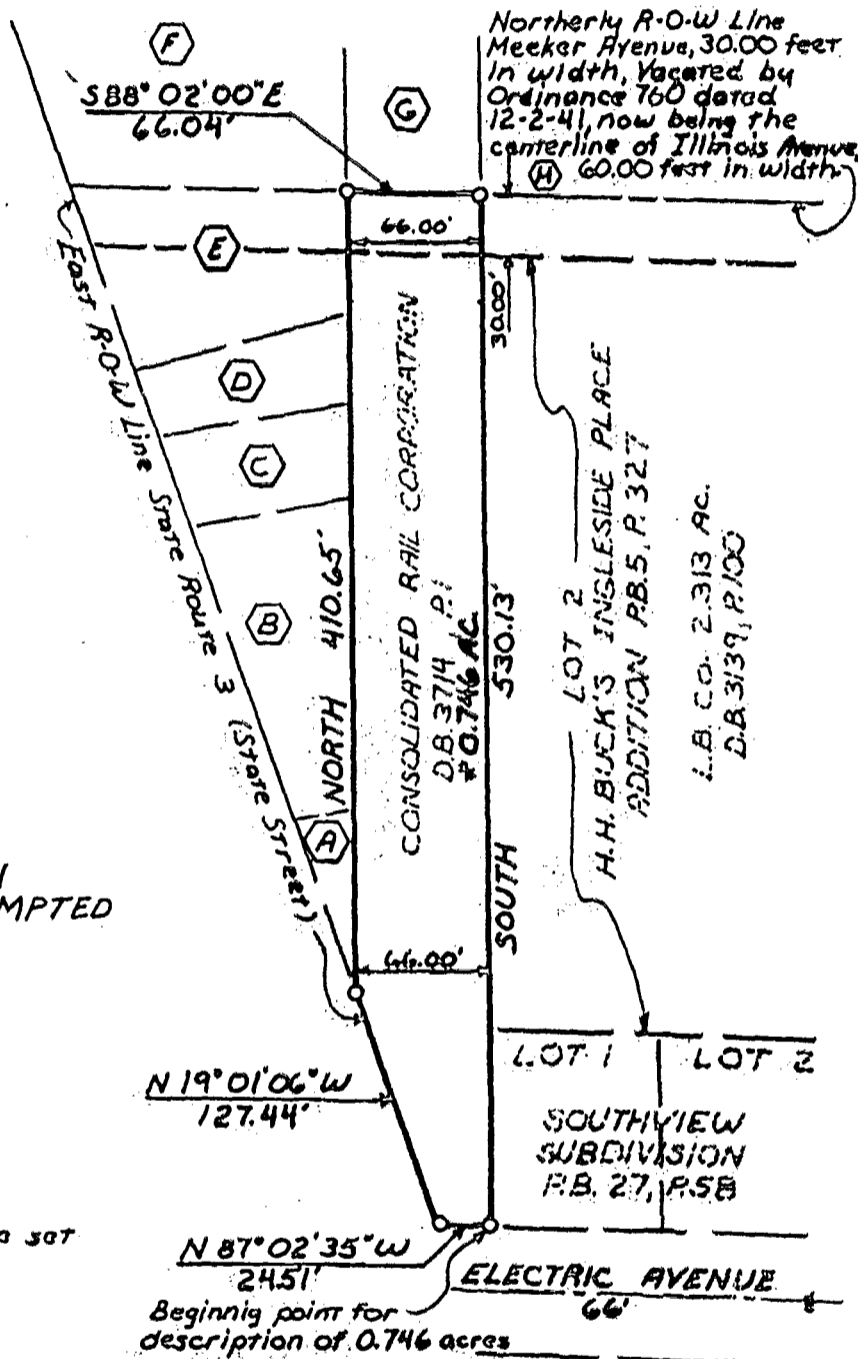
**BOUNDARY SURVEY MAP OF A 0.746 ACRE OF LAND SIXTY-SIX FOOT WIDE CONSOLIDATED RAIL CORPORATION LAND LOCATED EAST OF STATE ROUTE 3 (STATE STREET) BETWEEN ELECTRIC AVENUE AND ILLINOIS AVENUE, IN THE CITY OF WESTERVILLE, COUNTY OF FRANKLIN, STATE OF OHIO.**

Order No. 534-86

April 22, 1986

Scale: 1"=100'

- (A) BONDED OIL COMPANY  
PARCEL I  
D.B. 3256, P. 43
- (B) BONDED OIL COMPANY  
PARCEL II  
D.B. 3256, P. 43
- (C) BONDED OIL COMPANY  
PARCEL III  
D.B. 3256, P. 43
- (E) DARTMOOR CORPORATION  
Parcel 2 0.234 Ac.  
D.B. 2774, P. 541
- (F) ALLIED VENTURES  
Parcel 3 0.142 Ac.  
O.R. 03236 D19
- (G) ALLIED VENTURES  
O.R. 04559 C01
- (H) THE BOARD OF EDUCATION  
OF THE WESTERVILLE EXEMPTED  
VILLAGE SCHOOL DISTRICT  
34.334 Ac.  
D.B. 1916, P. 122
- (D) DARTMOOR CORPORATION  
Parcel 1 0.118 Ac.  
D.B. 2774, P. 541



Indicates 1/4-inch (I.D.) iron pipe set

\*Situating in the State of Ohio, County of Franklin, City of Westerville, being in Quarter Township 2, Township 2, Range 17, United States Military Lands, being a 0.746 acre area of land, more or less, said 0.746 acre area of land being out of the land conveyed to the Consolidated Rail Corporation by deed of record in Deed Book 3714, Page 1, Recorder's Office, Franklin County, Ohio said Consolidated Rail Corporation being (formerly Connecting Railway Company) known as the Mt. Vernon Secondary and identified as Line Code 8137 in the records of the United States Railway Association.

All of the survey markers shown on the above map were in place on April 21, 1986. The bearings shown on the above map are based on an assumed meridian.

We hereby certify that the above map was prepared from information obtained from an actual field survey conducted by Bauer, Davidson & Merchant, Inc. on March 25, 1986.

**BAUER, DAVIDSON & MERCHANT, INC.**  
Consulting Engineers

By William W. Merchant  
William W. Merchant  
Professional Surveyor No. 4843