

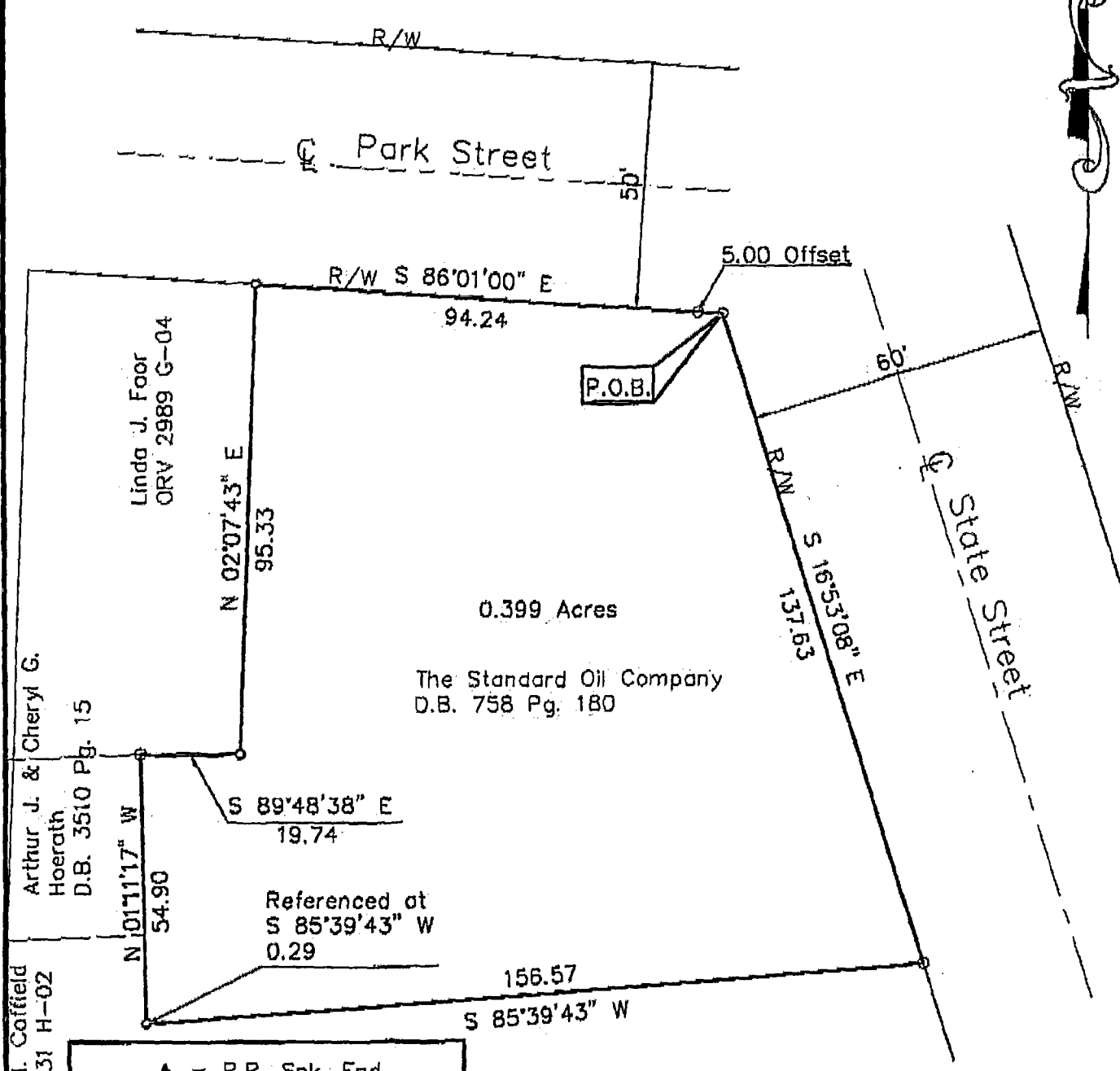
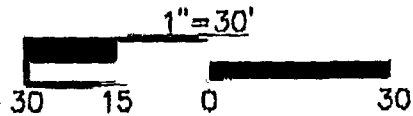


CIVIL ENGINEERING ASSOCIATES

9015 Antares Avenue Columbus, Ohio 43240 Tel. 614.433.9015 Fax 614.433.9513

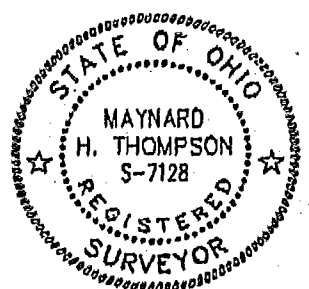
0.399 Acres

Situated in the State of Ohio, County of Franklin, City of Westerville.



Shirley M. Coffield ORV 12431 H-02
Arthur J. & Cheryl G. Hoerath D.B. 3510 Pg. 15
Linda J. Foor ORV 2989 G-04

▲ = R.R. Spk. Fnd.
△ = RR Spk. Set
● = I.P. Fnd.
○ = I.P. Set
I.P. Set are 3/4" O.D. Iron Pin 30" long w/cap inscribed CEA.



George W. Henderson, II ORV 8982 I-07

This drawing was prepared by Civil Engineering Associates Inc, from an actual field survey. The basis of bearing is South 16°53'08" East for the westerly right-of-way of State Street.
Maynard H. Thompson 7/2/97
Maynard H. Thompson, P.E. # S-7128 Date

644BND1-30

BLENDON 84 607 725

CEA FILE NAME: S:\SHARED\8610440\JOB_BND1\644BND1.DWG LAST EDITED BY GATEZ ON: 07-03-97 @ 07:17