

JACKSON TWP.  
0-36-E

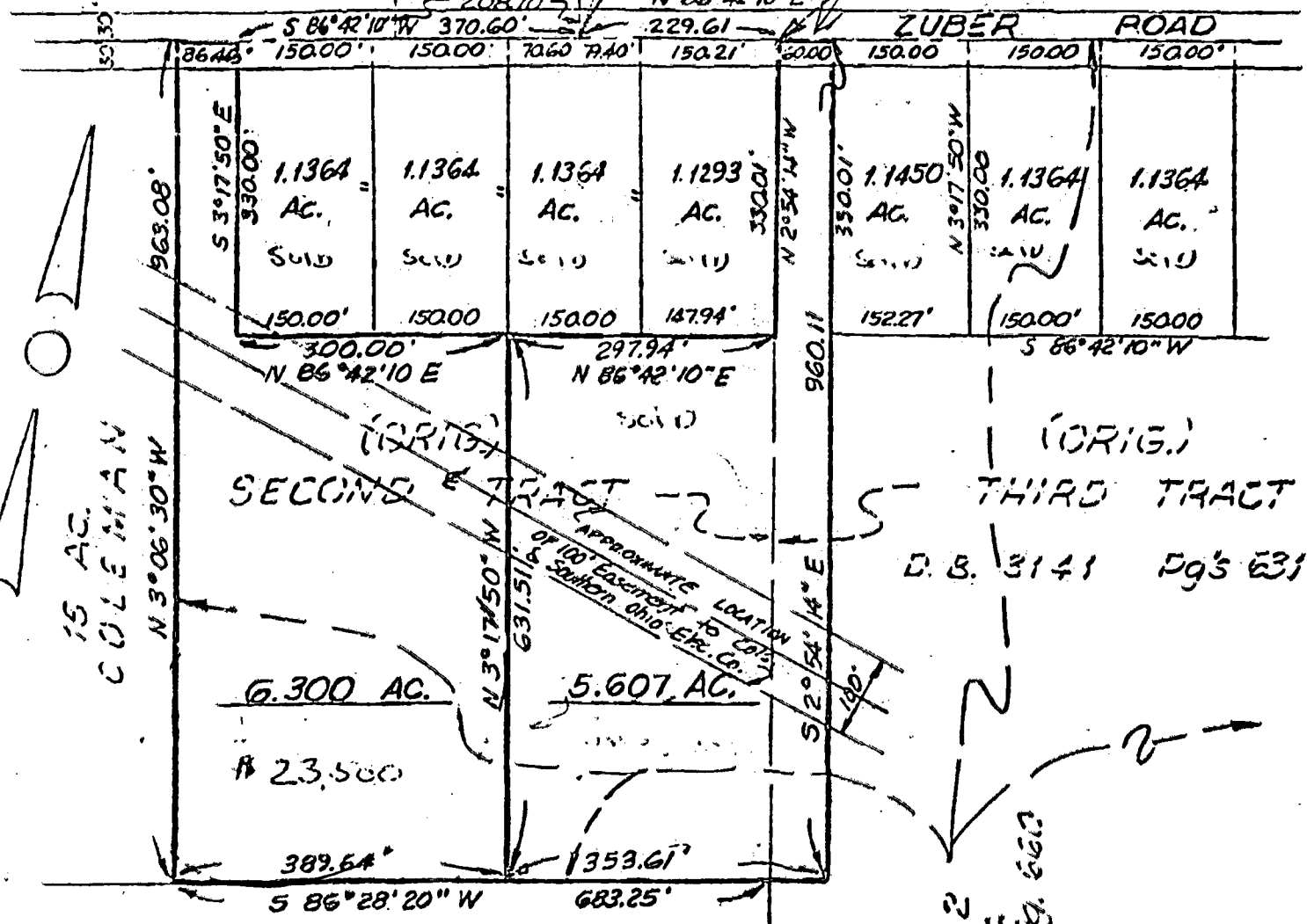
0-36-E

WEST ACRES SUEB NO 2  
P.E. 33 Pg. 44

M.L. & K.H.  
LUSHKOWSKI  
1,000 AC.  
D.E. 3129 Pg. 48  
2,087.0'

BEGIN DESCRIPTIONS

(ORIG.)  
FIRST TRACT



PART OF V.M.S. NUMBER 6115  
JACKSON TOWNSHIP, FRANKLIN CO., OHIO

SCALE 1" = 200'

FEB., 1979

r. d. zunde & associates, ltd.  
consulting engineers  
100 N. W. 10th St., Suite 1000  
Columbus, Ohio 43260

NOTE: THIS PLAT WAS PREPARED FROM  
DEED RECORD ONLY AND NOT  
AN ACTUAL SURVEY

81106650 81352650  
5299538 8357625  
52990118

JOHN  
KODL