

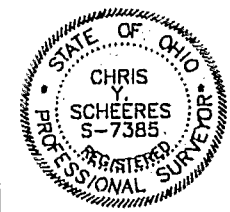
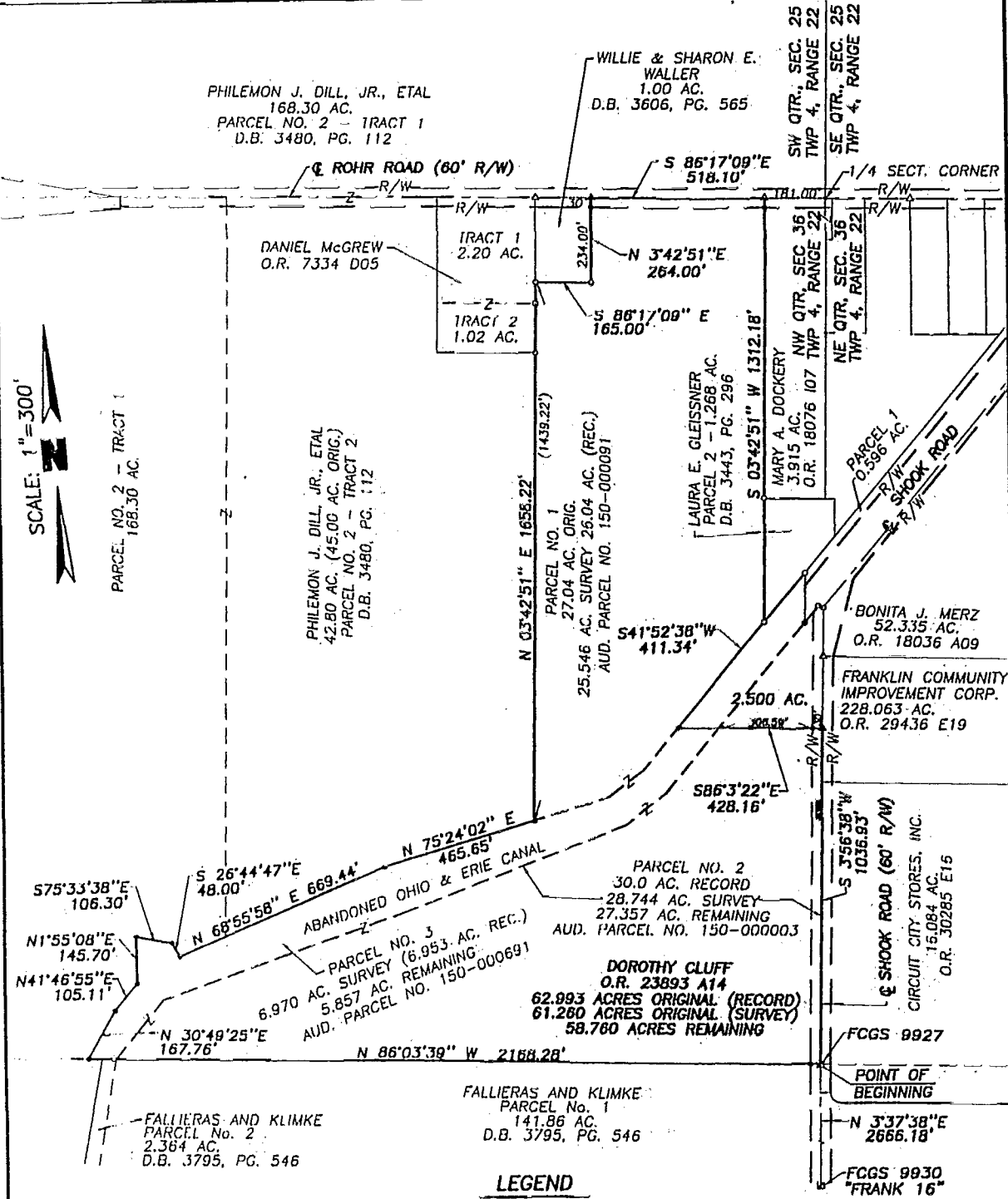
POMEROY AND ASSOCIATES, INC.

Consulting Engineers and Surveyors
6877 North High Street, Worthington, Ohio 43085

FAX (614)-885-2886

Phone (614)-885-2498

PLAT OF SURVEY -- 58.760 ACRE TRACT
SITUATED IN THE STATE OF OHIO, COUNTY OF FRANKLIN, HAMILTON TOWNSHIP
NW 1/4, SECTION 36, TOWNSHIP 4, RANGE 22, CONGRESS LANDS



- LEGEND**
- R/W RIGHT-OF-WAY
 - ▲ RAILROAD SPIKE SET
 - △ RAILROAD SPIKE FOUND
 - IRON PIN SET
 - IRON PIN FOUND
 - PK NAIL FOUND
 - ⊠ MONUMENT BOX FOUND

Basis of Bearing: Same Meridian as the grid bearing, N 3°37'38"E, between Franklin County Engineers Monuments No. 9930 & 9927, Ohio State Plane Coordinate System, South Zone.

DRAWN	CHK'D.	By: <i>Chris Y. Schoeres, P.S.</i>	Date: <i>31 Dec 1996</i>
JMR	CYS	Chris Y. Schoeres Ohio Registered Professional Surveyor No. 7385	

HAMILTON
 84 106 675
 84 106 700
 84 356 675
 84 356 700