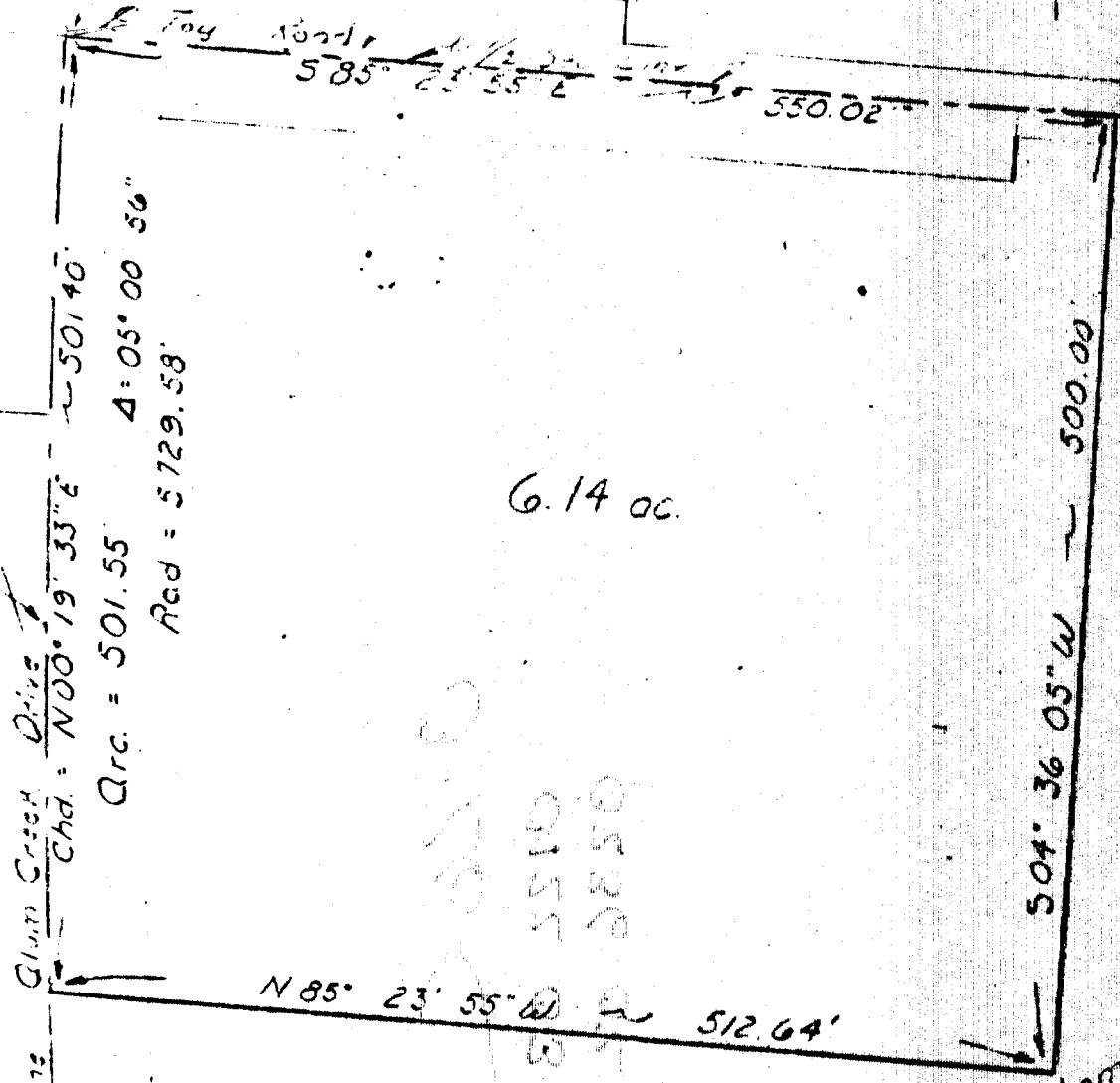
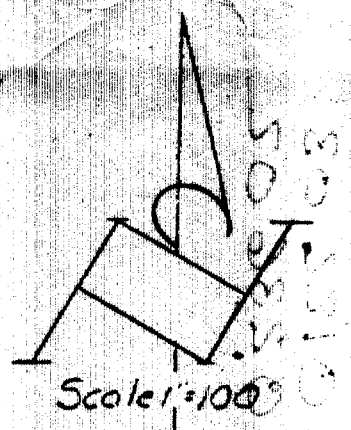


HAMILTON TWP
D-26-C

John Stambaugh
1932 ac.
DB-3500 Pg 60



"NOTE"
THIS PLAT AND THE DESCRIPTION
THIS TRACT WAS PREPARED FROM
EXISTING PUBLIC RECORDS AND
PREVIOUS SURVEYS. BEARINGS
MATCH THOSE USED FOR ALUM
CREEK DRIVE IMPROVEMENT.

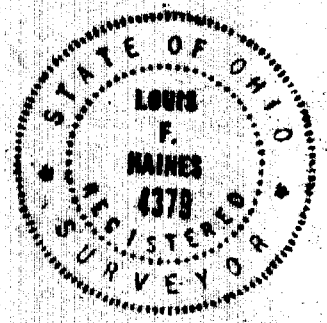
Survey of 6.14 acres
in the S.E. 1/4 section * 25,
Hamilton Twp., Franklin Co.
Ohio;

John Stambaugh
66 ac.
DB. 1333 Pg. 583

John Stambaugh

Louis F Haines

354 Kessler Street
Groveport, Ohio 43125
Phone 837-2181



I HEREBY CERTIFY THE PLAT SHOWN HEREON
IS CORRECT AS SURVEYED BY US.
DATE: February 17, 1982
SIGNED: Louis F. Haines

84356725