

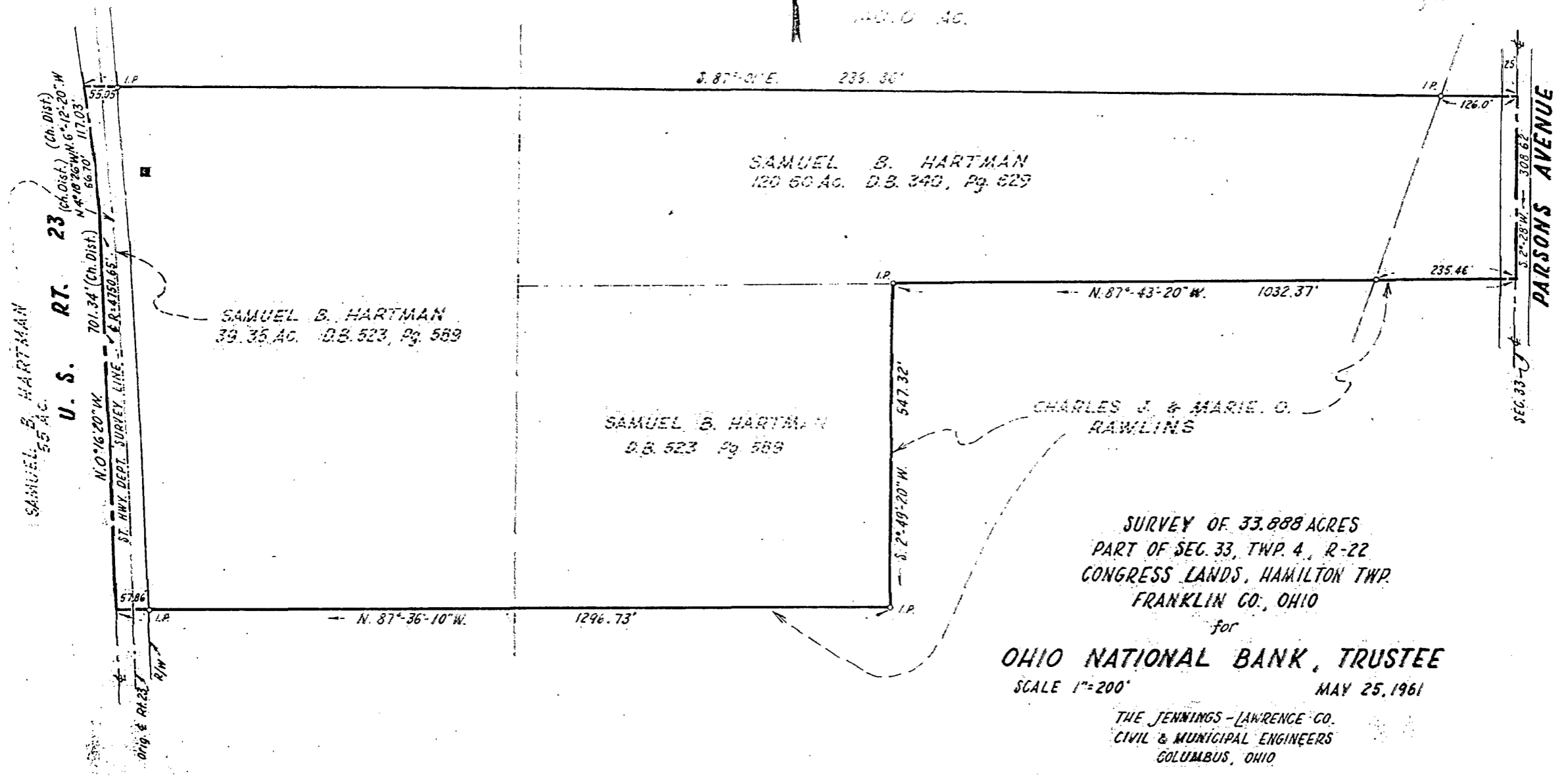
U32606675

02956675

SCIO TO

INC.

0-25-D
HAMILTON



SAMUEL B. HARTMAN
120.60 AC. D.B. 340, Pg. 829

SAMUEL B. HARTMAN
39.35 AC. D.B. 523, Pg. 589

SAMUEL B. HARTMAN
D.B. 523 Pg. 589

CHARLES J. & MARIE O.
RAWLINS

SURVEY OF 33.888 ACRES
PART OF SEC. 33, TWP. 4, R-22
CONGRESS LANDS, HAMILTON TWP.
FRANKLIN CO., OHIO

for
OHIO NATIONAL BANK, TRUSTEE

SCALE 1"=200'

MAY 25, 1961

THE JENNINGS-LAWRENCE CO.
CIVIL & MUNICIPAL ENGINEERS
COLUMBUS, OHIO

By Robert W. Spencer
REGISTERED SURVEYOR

Rev. 3, July, 1969
Rev. 6, March, 1962

C. S. 301-87

Job No. 69-608

0-25-D

3490 1120 055 031 E HIGH ST W PARSONS AVE 1969 0250 03