

PERRY Twp.

Maplecreek

RIVERSIDE DRIVE

S 11° 41' 12" W  
16.28'

A = 51° 25' 52" R = 5763.45  
S 10° 32' 07" W 104.61'

POINT OF BEGINNING

QUARRY OFFICE  
1.301 AC.

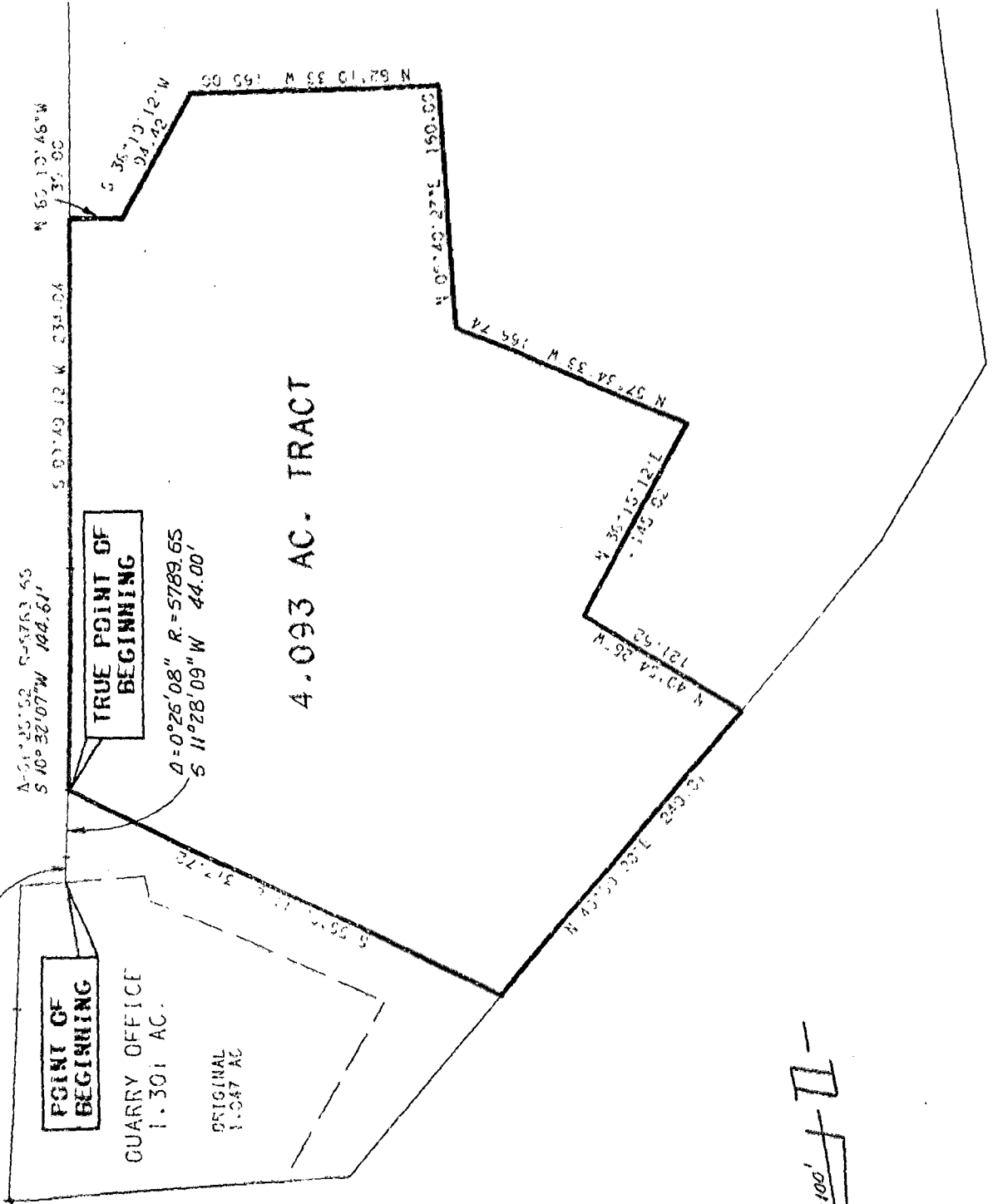
ORIGINAL  
1.047 AC

TRUE POINT OF BEGINNING

D = 0° 25' 08" R = 5789.65  
S 11° 28' 09" W 44.00'

4.093 AC. TRACT

THE QUARRY  
ON  
THE SCIOTO



ORIGINAL 12.540 AC TRACT

EXHIBIT OF  
4.093 AC. TRACT

SCALE: 1" = 100'

PREPARED BY:

R.D.Zande & Associates, Ltd.

AUGUST, 1964