

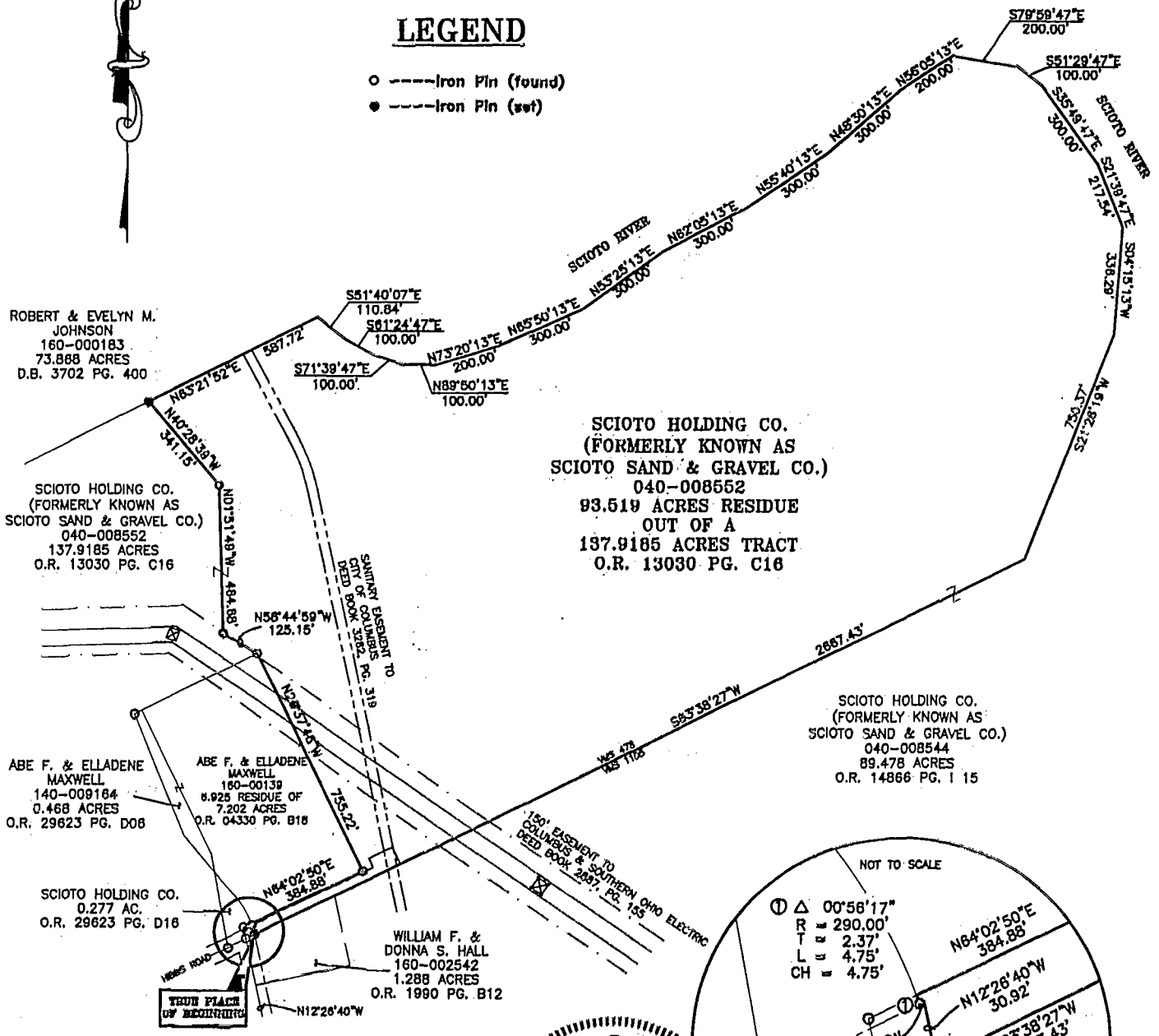
# 93.519 ACRES RESIDUE OUT OF A 137.9185 ACRE TRACT

SITUATED IN THE STATE OF OHIO, COUNTY OF FRANKLIN,  
CITY OF GROVE CITY, VIRGINIA MILITARY SURVEY NO. 478



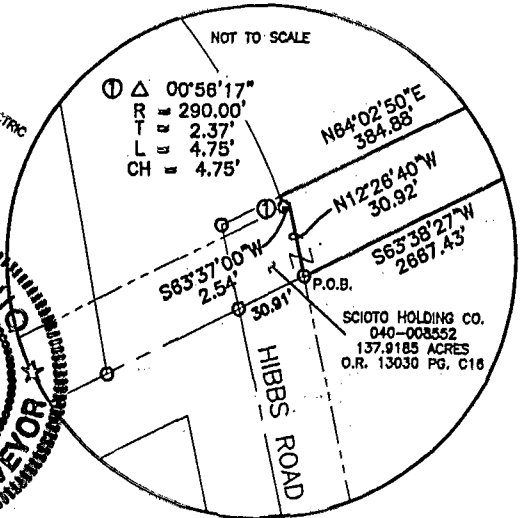
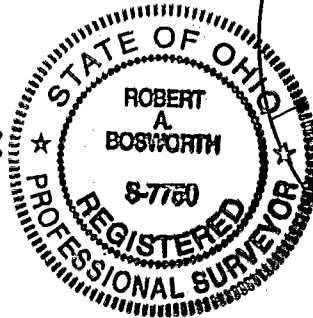
## LEGEND

- -----Iron Pin (found)
- -----Iron Pin (set)



## BASIS OF BEARINGS:

BEARINGS AS SHOWN ON THIS PLAT WERE BASED ON THE CENTERLINE OF HIBBS ROAD, FROM THE (FOUND) FRANKLIN COUNTY MONUMENT NO. 5538, TO A (FOUND) 1" SOLID PIN (3" DEEP) AT AN ANGLE POINT IN HIBBS ROAD, AS BEING NORTH 12 DEGREES, 26 MINUTES, 40 SECONDS WEST, AS SHOWN ON A CENTERLINE SURVEY PLAT DATED OCTOBER 1994 PROVIDED BY THE FRANKLIN COUNTY ENGINEER'S OFFICE.



GRAPHIC SCALE  
1" = 500'

## CERTIFICATION OF SURVEYOR

I HEREBY CERTIFY THAT BISCHOFF AND ASSOCIATES, INC. MADE AN ACTUAL FIELD SURVEY OF THE ABOVE DESCRIBED PREMISES ON DECEMBER 3, 1997, AND FROM RECORDS OF FILE AT THE ENGINEER'S OFFICE AND THE RECORDER'S OFFICE, FRANKLIN COUNTY, OHIO.

NOTE: ALL IRON PINS (SET) ARE 5/8" REBAR, 30 INCHES LONG WITH A YELLOW CAP BEARING "BISCHOFF & ASSOC."

*Robert A. Bosworth* 12-17-98  
ROBERT A. BOSWORTH REGISTERED SURVEYOR NO. S-7750 DATE

**BISCHOFF & ASSOCIATES, INC.**  
Consulting Engineers

807 KINNEAR ROAD COLUMBUS, OHIO 43212-1421

82 106 700  
82 356 700  
82 356 725