

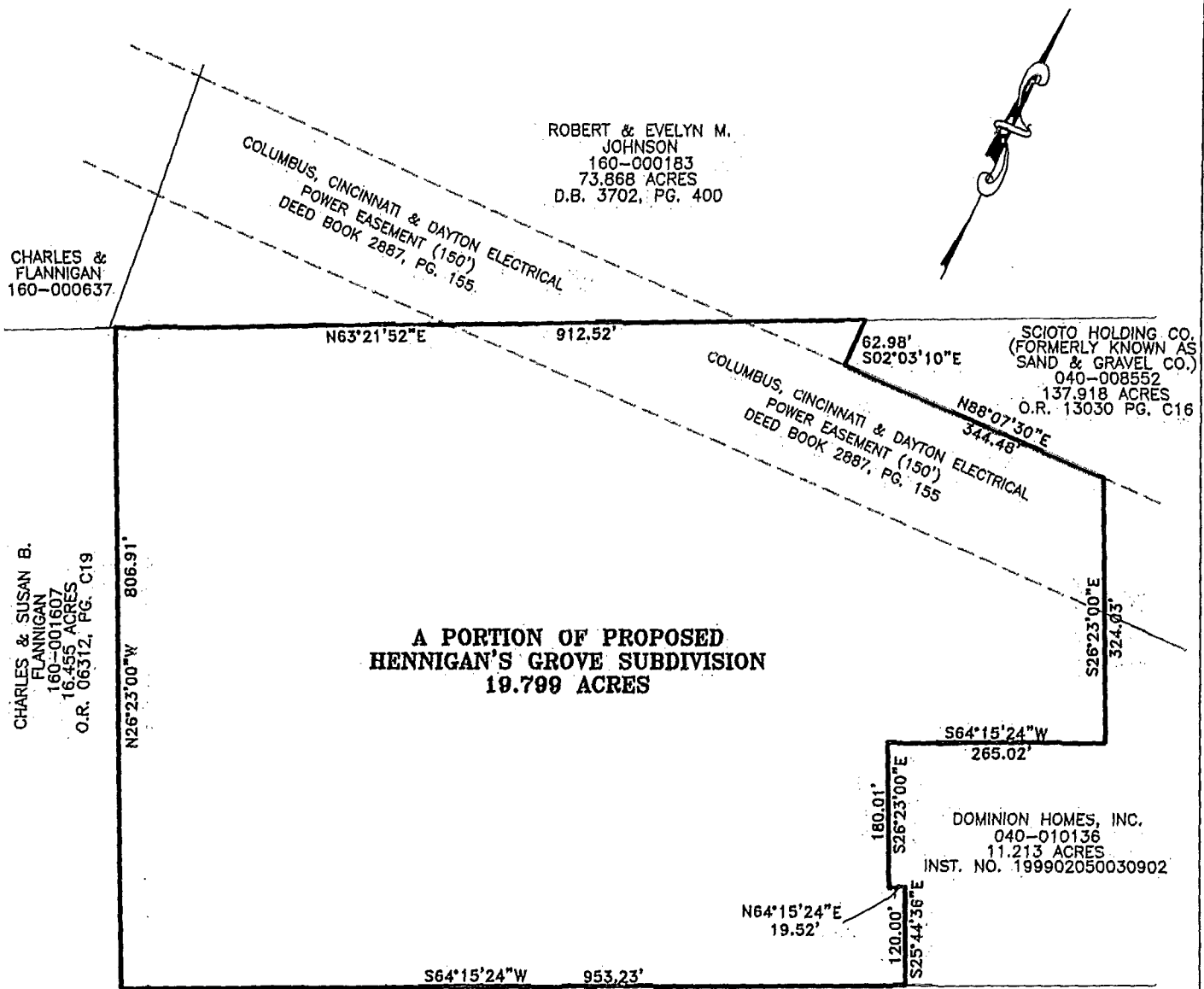
# LOT SPLIT SURVEY PLAT

## OF A PART OF HENNIGAN'S GROVE SUBDIVISION

### 19.799 ACRES

OUT OF AN  
ORIGINAL 137.918 ACRE TRACT  
SITUATED IN THE STATE OF OHIO, COUNTY OF FRANKLIN, CITY OF GROVE CITY,  
VIRGINIA MILITARY SURVEY NO. 478

8/18/52 700  
62/10/6 700



CHARLES & FLANNIGAN  
160-000637

ROBERT & EVELYN M. JOHNSON  
160-000183  
73.868 ACRES  
D.B. 3702, PG. 400

SCIOTO HOLDING CO.  
(FORMERLY KNOWN AS SAND & GRAVEL CO.)  
040-008552  
137.918 ACRES  
O.R. 13030 PG. C16

CHARLES & SUSAN B. FLANNIGAN  
160-001607  
16.465 ACRES  
O.R. 06312, PG. C19

**A PORTION OF PROPOSED  
HENNIGAN'S GROVE SUBDIVISION  
19.799 ACRES**

DOMINION HOMES, INC.  
040-010136  
11.213 ACRES  
INST. NO. 199902050030902

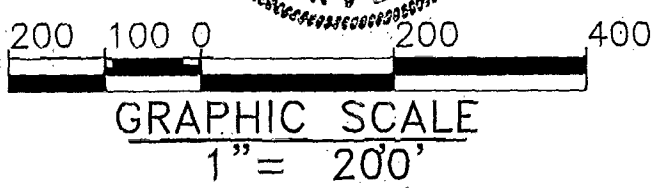
ERNEST N. & ALMA M. ASHTON  
160-001533  
15.831 ACRES  
O.R. 6029 PG. G02

TRUE PLACE OF BEGINNING



### BASIS OF BEARINGS

BEARINGS AS SHOWN ON THIS PLAT WERE BASED ON THE CENTERLINE OF HIBBS ROAD, FROM THE (FOUND) FRANKLIN COUNTY MONUMENT NO. 5538, TO THE CENTERLINE OF STATE ROUTE 665, AS BEING NORTH 11 DEGREES, 59 MINUTES, 34 SECONDS WEST, AS SHOWN OFFICIAL RECORD 14866 I 15, OF THE RECORDER'S OFFICE, FRANKLIN COUNTY, OHIO.



### CERTIFICATION OF SURVEYOR

I HEREBY CERTIFY THAT BISCHOFF AND ASSOCIATES, INC. MADE AN ACTUAL FIELD SURVEY OF THE ABOVE DESCRIBED PREMISES ON DECEMBER 3, 1997, AND FROM RECORDS ON FILE AT THE ENGINEER'S OFFICE AND THE RECORDER'S OFFICE, FRANKLIN COUNTY, OHIO.

NOTE: ALL IRON PINS (SET) ARE 5/8" REBAR, 30 INCHES LONG WITH A YELLOW CAP BEARING "BISCHOFF & ASSOC."

*Mark E. Cameron* 27 Jan 2000  
MARK E. CAMERON, P.S. REGISTERED SURVEYOR NO. 7395 DATE

**BISCHOFF & ASSOCIATES, INC.**  
Consulting Engineers  
807 KIRKNEAR ROAD COLUMBUS, OHIO 43212-1421

O-30-B  
JACKSON TWP