

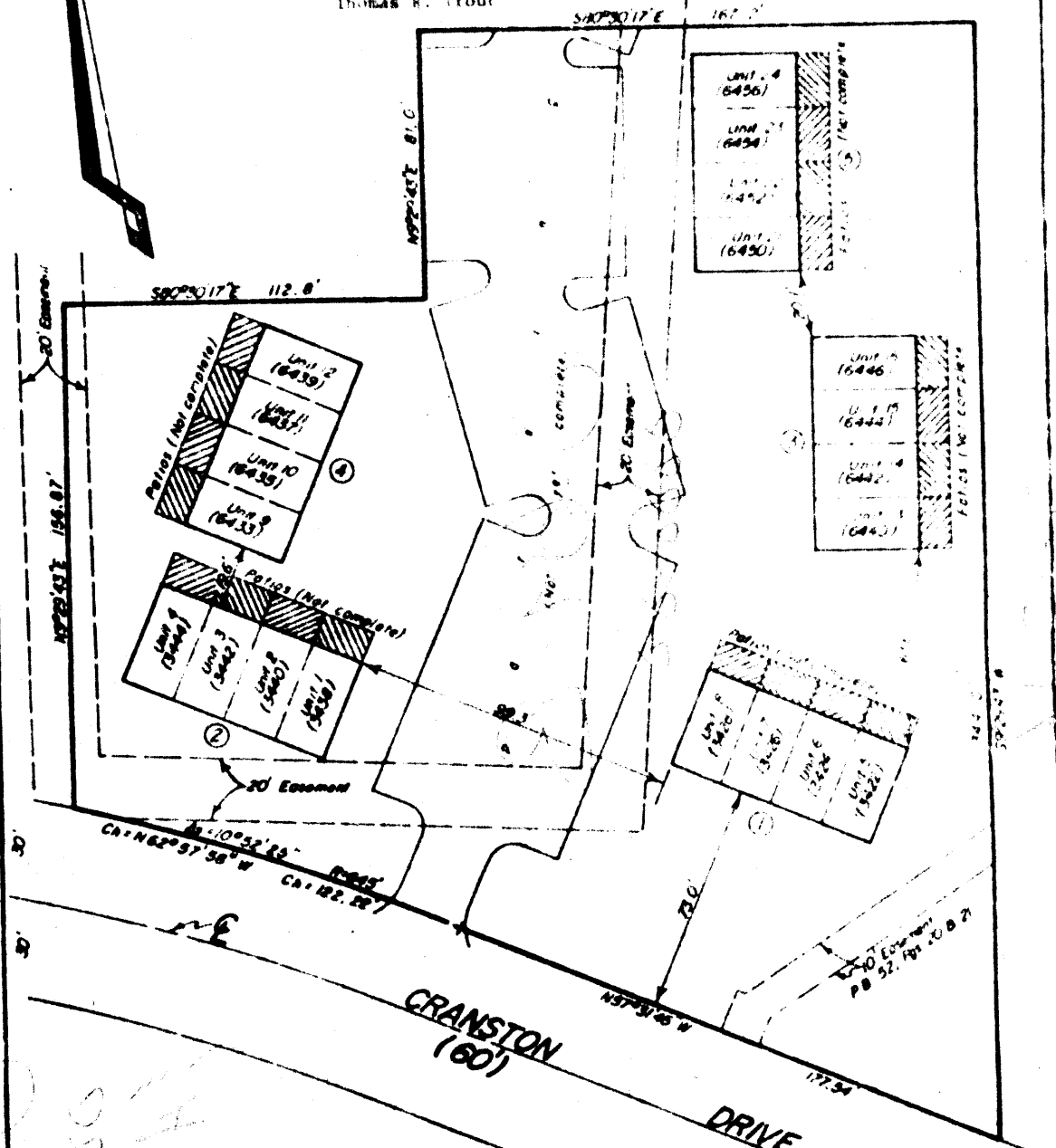
PERCY TRUP
O-69-B

CRANSTON COMMONS CONDOMINIUM

O-69-B

I hereby certify that this drawing accurately shows the location of the common areas, facilities and buildings as constructed of CRANSTON COMMONS CONDOMINIUM.

By Thomas R. Trout
Registered Architect No. 11497
Thomas R. Trout



58-2600

CRANSTON
(60)
DRIVE

SURVEYED & PLATTED
BY
EWANS, MECHWART, HAMBLETON & TILTON, INC.
CONSULTING ENGINEERS AND SURVEYORS
COLUMBUS, OHIO

I hereby certify that this drawing accurately shows the location of the common areas, facilities and buildings as constructed of CRANSTON COMMONS CONDOMINIUM.

Thomas R. Trout
Registered Surveyor No. 9000

SCALE: 1"=40' FEBRUARY 8, 1962

United States Area
FEDERAL BUREAU OF SURVEY

EXHIBIT "C"
Page 1 of 1

Poor
Original